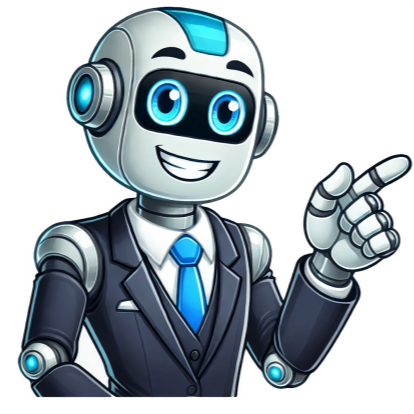


I'm human



NEXA 2000 IPS term D SERIES 1 USER GUIDES/KEY FEATURES INCLUDE: LCD DIRECTORY CALL TELEPHONE HELPS RECALL CONFERENCE PROGRAMMABLE KEYS - TOUCH SPEED DIAL KEYS 16 DSS/ONE MIC KEY FEATURES INCLUDE: DTR-32D-1 (BK) TEL HOLD TRANSFER SPEAKER DTR-8D-1 (BK) TEL MESSAGE - UP/DOWN VOLUME/CONTRAST BUILT-IN MICROPHONE TABLE OF CONTENTS KEYS AND LAMPS..... 4 TERMINAL SETUP WITH THE FEATURE KEY..... 20 DIAL BY NAME USING STATION SPEED DIALING..... 11 TO ORIGINATE AN OUTSIDE CALL VIA EXTENSION LINE KEY 12 TO ORIGINATE AN INTERNAL CALL..... 13 OUTSIDE LINE APPEARANCE..... DIAL BY NAME USING SYSTEM SPEED DIALING..... 20 REMOTE HOLD.....LAST NUMBER REDIAL..... 32 CID CALL BACK CALL FORWARDING-ALL CALLS 33 CALL FORWARDING BUSY..... 34 Press the corresponding key to activate or deactivate certain features on your phone: * Call Forwarding - Destination: Press to set a call forwarding destination, FD-DC (Call Forwarding - Destination Cancel) to cancel. * MICM: Press to activate manual intercom. * Headset: Press the Soft Key below "Headset" to turn headset operation on or off. * Help: Press the Help Key for assistance, and press a desired Soft Key for more information about that key. The phone also has various lamps and displays: * Call Indicator Lamp: Flashes when a call ends, lights steadily when a message is left. * LCD (Liquid Crystal Diode) display shows activity information, date, time, and Soft Key operation. * LED (Light Emitting Diode): Some function keys have an LED that lights or flashes according to their activity. To use the Feature Key: * Microphone On/Off: Press the MIC lamp to change microphone status. * Ring tone selection: Press Feature and 3 to select a ring tone, displayed on the LCD. * Ringer volume adjustment: Press Feature and 0, then press down or up to decrease or increase volume. To make internal or external calls: * Internal call: Lift handset or press Speaker key, receive dial tone, dial desired station number. * External line appearance: Press OUTSIDE LINE APPEARANCE feature key, lift handset or press Speaker, receive Central Office or distant PBX dial tone, dial destination. * Answer incoming call: Press LINE APPEARANCE feature key. To use one-touch buttons: * Press a Speed Call button or press Speaker and Speed Call to originate a call. * To program: Press Conf button, flash desired One-Touch button, enter desired station number, feature code, or outside access code and telephone number. When your Dterm device is not in use, it automatically returns to idle mode after a party hangs up. To initiate a call using speed dialing (individual/group), press the Redial button and enter the desired speed dial number (00-99) via the dial pad. Note that access to this feature depends on data assignment. To enter an Account Code: * Lift the handset or press Speaker, receive the dial tone. * Enter the feature access code, receive service set tone. * Enter the Account Code (up to 10 digits), and receive dial tone. Or, to enter without an Account Code: * Lift the handset or press Speaker, receive the dial tone. * Enter the feature access code, receive service set tone. * Enter the Authorization Code (up to 10 digits) and receive dial tone. For Voice First/Tone First: Press Speaker, receive dial tone. Dial Voice/Tone access code. The LED display shows the current mode, receives feature dial tone. Press Voice key or press 1 to initiate a hands-free call. To answer a voice call hands-free: * Receive an incoming voice call. * Press MIC Key, and respond hands-free. Note: If privacy is required, lift the handset. Automatic Intercom: To initiate: * Lift the handset or press Speaker key. Press AICM key. Tone burst is sent. To answer: * AICM key flashes green indicating an incoming intercom call. Voice Call alert tone is heard. Press AICM to lift the handset or press Speaker, LED lights solid green. Manual Intercom: To initiate: * Lift the handset or press Speaker, press MICM. Ring back tone is heard. To answer: * MICM key flashes, indicating an incoming call. Ring tone may also be heard. Press MICM to lift the handset or press Speaker, LED lights solid green. Dial Intercom: To initiate: * Lift the handset or press Speaker key. Press DICM key. Dial desired intercom station number (0-9). Tone burst is sent. To answer: * DICM LED flashes, indicating an incoming intercom call. Tone burst or ring tone is heard. Press DICM to lift the handset or press Speaker, LCD shows solid green. Dial by Name using System Speed Dialing: * Press the SYS soft key. * Enter up to the first four characters of a name using the keypad. * Press the UP or DOWN key to start the search. * The name and number are shown on the LCD. If more than one match is found, scroll through the matches with the UP or DOWN soft key. * If no match is found, the first System Speed Dial buffer will be displayed. * Press the Speaker key or selecting a Line/Trunk key to dial the selected number. Dial by Name using Station Speed Dialing: * Press the DIRECTORY key. To save a name & number to Station Speed Dialing: * Press the DIRECTORY key * Press the UP or DOWN key to select buffer to be programmed * Use the keypad to enter the name and number Note: When entering an outside number, you must include the Trunk Access Code (i.e., 9) followed by area code and number. To place a call on hold: * Press Hold. Held line wink To retrieve a call, you need to follow specific steps depending on the type of hold. For Exclusive Hold, only the station that set this option can retrieve the call, and it will show as a flashing red LED on other phones with the same line. To retrieve from another station: 1. Lift handset or press Speaker. 2. Press held line. 3. Use handset to converse. Note: This method is only available for Exclusive Hold lines. If you're at the destination station's extension, you need to: 1. Press the Hold key. 2. Hang up. 3. To retrieve, lift handset or press Speaker. 4. Press line on hold. 5. Use handset to converse. Any station with the destination line appearance can retrieve the call. When you receive the Busy indication, press the Call Back key and the call will be placed in queue for the next available Outside Line. Replace your handset and wait until the Outside Line is free. When it's available, the setting station will be alerted with ringing and flashing red LED lights. Press Speaker or lift the handset to hear the dial tone, then dial the desired number. If you want to recall the last number dialed, press Redial, and follow the special instructions. For CALL FORWARDING-ALL CALLS: * To set: Press Speaker, receive dial tone, and follow the access code. * To verify (with 16 or 32-button Dterm): Press FD-A or dial Call Forwarding-All access code to see where calls are forwarded. * To cancel: Press FD-A plus * or dial Call Forwarding cancel code. For CALL FORWARDING-NO ANSWER: * To set: Press Speaker, receive dial tone, and press FD-N or dial Call Forwarding No Answer access code. Dial the destination station or external number. * To verify: Press Speaker, receive extension dial tone, and press FD-N or dial Call Forwarding-No Answer access code. For CALL FORWARDING DESTINATION: * To set: Press Speaker, receive dial tone, and press FD-DS or dial Call Forwarding Destination access code. Dial the station number to be forwarded. * To cancel: Press FD-DC or dial Call Forwarding Destination cancel code. To save a repeated number, press Speaker, then S & R. The Dterm will automatically redial the programmed number. If the saved number is busy or no answer, press S & R again before hanging up to try saving it again. For INTERNAL ZONE PAGING WITH MEET-ME PAGE: * This feature allows a system user to page over the built-in speaker of the Dterm terminal within their internal zone. Given article text here The article describes various features and functions of a telephone system, including call forwarding, answering calls on behalf of another party, and setting reminders. The article outlines the steps to access these features, including dialing specific codes or using the keypad to enter data. Here are some key points from the article: * To answer a call, you need to lift the handset, press the boss's ringing line, ask the calling party to hold, and then press the boss's line again. * If the incoming call is intended for someone else, you can put it on hold and wait for them to answer. * You can also set reminders using a feature called "Timed Reminder" which allows you to receive a reminder call at a specific time. Additionally, there are some security features in place to prevent unauthorized access to the system, including: * A "Do Not Disturb" feature that allows you to silence incoming calls. * A "Privacy Release" feature that allows you to allow someone else to enter a call in progress. * Call Forwarding-Destination Entry Cancel: *7 * Do Not Disturb Set Cancel: *8 * Last Number Redial: ** Account Code Entry: *# Station Speed Dialing Originate: #* System Speed Dialing Originate: ## - Operator Call: 0 Call Hold: 11 Internal Zone Paging Group 0-4: Page 50-59 Time Reminder/Automatic Wake up Set Cancel: 5* 5* * Voice/Tone Toggle Station Name Assignment: 60-62 Call Park System Retrieve: 6# 6# * Night Pickup: 72 Call Pickup-Direct: 73 * Call Pickup-Group: 74 Call Pickup-Designated Group: 75 Station Speed Dialing Entry Cancel: 7* 7# * www.eng.nec Page 2 TABLE OF CONTENTS KEYS AND LAMPS: 4 TERMINAL SETUP WITH THE FEATURE KEY: 11 TO ORIGINATE AN OUTSIDE CALL VIA EXTENSION LINE KEY: 12 TO ORIGINATE AN INTERNAL CALL: 13 OUTSIDE LINE APPEARANCE: 13 TO ORIGINATE A CALL USING ONE-TOUCH BUTTONS: 14 AUTOMATIC IDLE RETURN: 15 TO ORIGINATE A CALL USING SPEED CALLING (INDIVIDUAL/GROUP): 15 ACCOUNT CODE: 16 FORGED ACCOUNT CODE: 16 AUTHORIZATION CODE: 17 VOICE FIRST/TONE FIRST: 17 ORIGINATING A VOICE CALL: 17 TO ANSWER A VOICE CALL HANDS FREE: 18 AUTOMATIC INTERCOM: 18 MANUAL INTERCOM: 19 DIAL INTERCOM: 20 Page 3- EXITLCDHELP SOFT KEYS (4) MIC UP/DOWN VOLUME/CONTRAST SPEAKERANSWERTRANSFERHOLDREDIAL CONFERENCE RECALL BUILT-IN MICROPHONE MESSAGE/DIRECTORYPROGRAMMABLE KEYS16 Flexible Line/Feature Keys CALL INDICATIONFEATUREUSER PROGRAMMABLE KEYS16 DSS/One Touch Speed Dial KeysDTR-32D-1 (BK) TEL DTR-8D-1 (BK) TEL DTR-8D-1 (BK) TEL Page 4 - 2 - DIAL BY NAME USING SYSTEM SPEED DIALING: 20 DIAL BY NAME USING STATION SPEED DIALING: 21 TO SAVE A NAME & NUMBER TO STATION SPEED DIALING: 22 TO PLACE A CALL ON HOLD: 22 TO PLACE A CALL ON EXCLUSIVE HOLD: 23 TO PLACE A CALL ON REMOTE HOLD: 24 TO TRANSFER A CALL: 25 CONFERENCE: 26 TO ESTABLISH A BROKER 1. Call Back (Station) 2. To answer a camped-on call 3. To set camp-on (transfer method) 4. Camp-on (call waiting method) 5. Call park (system) 6. Call pickup (group) 7. Call pickup (direct) 8. Outside line queuing (from extension dial tone) 9. Timed queuing (outside line only) 10. Executive override 11. Transfer: allows station user to transfer established calls to another station without attendant assistance 12. Speaker: controls built-in speaker for hands-free dialing/monitoring, has LED on key lights when active 13. Answer: press key to answer waiting call when LED is lit on this key 14. Redial: activate redial feature, press * key to dial 15. Conf: establish 3-way conversation, press key to activate, LED lighted when active 16. Last Number Redial: press redial and scroll through numbers dialed until desired number displayed 17. CID Call Back: automatic call back for missed calls 18. Forwarding all calls: forward incoming calls to another number 19. Forwarding busy: forward calls when recipient is not available 20. Forwarding no answer: forward calls when recipient does not answer 21. Forwarding destination: specify alternative number for forwarded calls 22. Save and repeat a number: save current dialed numbers for easy reuse 23. Internal zone paging with meet-me page: allow multiple users to be paged at same location 24. Boss/secretary calling: use special key to call supervisor or secretary for assistance 25. Boss/secretary override: gain access to restricted areas or functions when authorized by supervisor 26. Do not disturb: signal to others when unavailable or on a conference call 27. Timed reminder: schedule calls to be made at specific time intervals 28. Privacy release: give permission to display caller's phone number and other personal info 29. Return message schedule: set reminder for incoming messages to be returned

Nec dtp-16d-1a user manual. Nec dtr-16d-2(bk)tel manual. Nec dtr-16d-2. Nec dtr-16d-2 user manual. Nec dtr-16d-1.