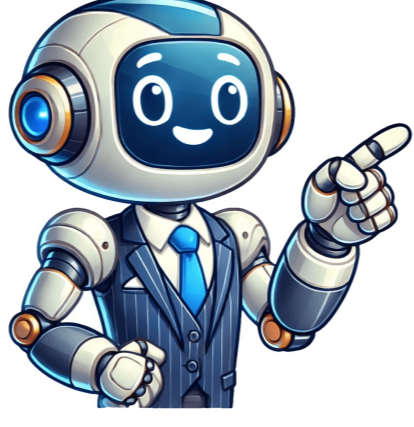


Click to prove
you're human



88 inches in feet

"Inches to Feet" CalculatorHow many feet in 88 inches?Answer: 88" = 7.33' 88 Inches is equal to 7.33 FeetExplanation of 88 Inches to Feet ConversionInches to Feet Conversion Formula: ft = in / 12According to 'inches to feet' conversion formula if you want to convert 88 (eighty-eight) Inches to Feet you have to divide 88 by 12.Here is the complete solution:88" ÷ 12 = 7.33(seven point three three feet)Related Calculations7.33 feet in inches88 inches in feet a href="#">88 inches in feet - Calculatio Inches to Feet" CalculatorFAQPage 2"Inches to Feet" CalculatorHow many feet in 82 inches?Answer: 82" = 6.83' 82 Inches is equal to 6.83 FeetExplanation of 82 Inches to Feet ConversionInches to Feet Conversion Formula: ft = in / 12According to 'inches to feet' conversion formula if you want to convert 82 (eighty-two) Inches to Feet you have to divide 82 by 12.Here is the complete solution:82" ÷ 12 = 6.83(six point eight three feet)Related Calculations82 inches in feet82 inches in mm a href="#">82 inches in feet - Calculatio Inches to Feet" CalculatorFAQPage 3"Inches to Feet" CalculatorHow many feet in 82.6 inches?Answer: 82.6" = 6.88' 82.6 Inches is equal to 6.88 FeetExplanation of 82.6 Inches to Feet ConversionInches to Feet Conversion Formula: ft = in / 12According to 'inches to feet' conversion formula if you want to convert 82.6 (eighty-two point six) Inches to Feet you have to divide 82.6 by 12.Here is the complete solution:82.6" ÷ 12 = 6.88(six point eight eight feet)Related Calculations a href="#">82.6 inches in feet - Calculatio Inches to Feet" CalculatorFAQPage 4"Inches to Feet" CalculatorHow many feet in 86 inches?Answer: 86" = 7.17' 86 Inches is equal to 7.17 FeetExplanation of 86 Inches to Feet ConversionInches to Feet Conversion Formula: ft = in / 12According to 'inches to feet' conversion formula if you want to convert 86 (eighty-six) Inches to Feet you have to divide 86 by 12.Here is the complete solution:86" ÷ 12 = 7.17(seven point one seven feet)Related Calculations86 inches in feet86 inches in meters a href="#">86 inches in feet - Calculatio Inches to Feet" CalculatorFAQPage 5"Inches to Feet" CalculatorHow many feet in 83 inches?Answer: 83" = 6.92' 83 Inches is equal to 6.92 FeetExplanation of 83 Inches to Feet ConversionInches to Feet Conversion Formula: ft = in / 12According to 'inches to feet' conversion formula if you want to convert 83 (eighty-three) Inches to Feet you have to divide 83 by 12.Here is the complete solution:83" ÷ 12 = 6.92(six point nine two feet) a href="#">83 inches in feet - Calculatio Inches to Feet" CalculatorFAQPage 6"Inches to Feet" CalculatorHow many feet in 80 inches?Answer: 80" = 6.67' 80 Inches is equal to 6.67 FeetExplanation of 80 Inches to Feet ConversionInches to Feet Conversion Formula: ft = in / 12According to 'inches to feet' conversion formula if you want to convert 80 (eighty) Inches to Feet you have to divide 80 by 12.Here is the complete solution:80" ÷ 12 = 6.67(six point six seven feet) a href="#">80 inches in feet - Calculatio Inches to Feet" CalculatorFAQPage 7"Inches to Feet" CalculatorHow many feet in 78 inches?Answer: 78" = 6.5' 78 Inches is equal to 6.5 FeetExplanation of 78 Inches to Feet ConversionInches to Feet Conversion Formula: ft = in / 12According to 'inches to feet' conversion formula if you want to convert 78 (seventy-eight) Inches to Feet you have to divide 78 by 12.Here is the complete solution:78" ÷ 12 = 6.5(six point five feet) a href="#">78 inches in feet - Calculatio Inches to Feet" CalculatorFAQPage 8"Inches to Feet" CalculatorHow many feet in 74.8 inches?Answer: 74.8" = 6.23' 74.8 Inches is equal to 6.23 FeetExplanation of 74.8 Inches to Feet ConversionInches to Feet Conversion Formula: ft = in / 12According to 'inches to feet' conversion formula if you want to convert 74.8 (seventy-four point eight) Inches to Feet you have to divide 74.8 by 12.Here is the complete solution:74.8" ÷ 12 = 6.23(six point two three feet)Related Calculations74.8 inches in feet74.8 inches in centimeters a href="#">74.8 inches in feet - Calculatio Inches to Feet" CalculatorFAQPage 9"Inches to Feet" CalculatorHow many feet in 78.8 inches?Answer: 78.8" = 6.57' 78.8 Inches is equal to 6.57 FeetExplanation of 78.8 Inches to Feet ConversionInches to Feet Conversion Formula: ft = in / 12According to 'inches to feet' conversion formula if you want to convert 78.8 (seventy-eight point eight) Inches to Feet you have to divide 78.8 by 12.Here is the complete solution:78.8" ÷ 12 = 6.57(six point five seven feet)Related Calculations a href="#">78.8 inches in feet - Calculatio Inches to Feet" CalculatorFAQPage 10"Inches to Feet" CalculatorHow many feet in 78.7 inches?Answer: 78.7" = 6.56' 78.7 Inches is equal to 6.56 FeetExplanation of 78.7 Inches to Feet ConversionInches to Feet Conversion Formula: ft = in / 12According to 'inches to feet' conversion formula if you want to convert 78.7 (seventy-eight point seven) Inches to Feet you have to divide 78.7 by 12.Here is the complete solution:78.7" ÷ 12 = 6.56(six point five six feet)Related Calculations78.7 inches in feet78.7 inches in centimeters a href="#">78.7 inches in feet - Calculatio Inches to Feet" CalculatorFAQPage 11"Inches to Feet" CalculatorHow many feet in 76.7 inches?Answer: 76.7" = 6.39' 76.7 Inches is equal to 6.39 FeetExplanation of 76.7 Inches to Feet ConversionInches to Feet Conversion Formula: ft = in / 12According to 'inches to feet' conversion formula if you want to convert 76.7 (seventy-six point seven) Inches to Feet you have to divide 76.7 by 12.Here is the complete solution:76.7" ÷ 12 = 6.39(six point three nine feet)Related Calculations a href="#">76.7 inches in feet - Calculatio Inches to Feet" CalculatorFAQPage 12"Inches to Feet" CalculatorHow many feet in 76.75 inches?Answer: 76.75" = 6.4' 76.75 Inches is equal to 6.4 FeetExplanation of 76.75 Inches to Feet ConversionInches to Feet Conversion Formula: ft = in / 12According to 'inches to feet' conversion formula if you want to convert 76.75 (seventy-six point seven five) Inches to Feet you have to divide 76.75 by 12.Here is the complete solution:76.75" ÷ 12 = 6.4(six point four feet) a href="#">76.75 inches in feet - Calculatio Inches to Feet" CalculatorFAQPage 13"Inches to Feet" CalculatorHow many feet in 72.5 inches?Answer: 72.5" = 6.04' 72.5 Inches is equal to 6.04 FeetExplanation of 72.5 Inches to Feet ConversionInches to Feet Conversion Formula: ft = in / 12According to 'inches to feet' conversion formula if you want to convert 72.5 (seventy-two point five) Inches to Feet you have to divide 72.5 by 12.Here is the complete solution:72.5" ÷ 12 = 6.04(six point zero four feet)Related Calculations72.5 inches in feet72.5 inches in centimeters a href="#">72.5 inches in feet - Calculatio Inches to Feet" CalculatorFAQPage 14"Inches to Feet" CalculatorHow many feet in 70.5 inches?Answer: 70.5" = 5.88' 70.5 Inches is equal to 5.88 FeetExplanation of 70.5 Inches to Feet ConversionInches to Feet Conversion Formula: ft = in / 12According to 'inches to feet' conversion formula if you want to convert 70.5 (seventy point five) Inches to Feet you have to divide 70.5 by 12.Here is the complete solution:70.5" ÷ 12 = 5.88(five point eight eight feet)Related Calculations a href="#">70.5 inches in feet - Calculatio Inches to Feet" CalculatorFAQPage 15"Inches to Feet" CalculatorHow many feet in 70.75 inches?Answer: 70.75" = 5.9' 70.75 Inches is equal to 5.9 FeetExplanation of 70.75 Inches to Feet ConversionInches to Feet Conversion Formula: ft = in / 12According to 'inches to feet' conversion formula if you want to convert 70.75 (seventy point seven five) Inches to Feet you have to divide 70.75 by 12.Here is the complete solution:70.75" ÷ 12 = 5.9(five point nine feet) a href="#">70.75 inches in feet - Calculatio Inches to Feet" CalculatorFAQPage 16"Inches to Feet" CalculatorHow many feet in 67.7 inches?Answer: 67.7" = 5.64' 67.7 Inches is equal to 5.64 FeetExplanation of 67.7 Inches to Feet ConversionInches to Feet Conversion Formula: ft = in / 12According to 'inches to feet' conversion formula if you want to convert 67.7 (sixty-seven point seven) Inches to Feet you have to divide 67.7 by 12.Here is the complete solution:67.7" ÷ 12 = 5.64(five point six four feet)Related Calculations67.7 inches in feet5.64 feet in centimeters a href="#">67.7 inches in feet - Calculatio Inches to Feet" CalculatorFAQPage 17"Inches to Feet" CalculatorHow many feet in 67.4 inches?Answer: 67.4" = 5.62' 67.4 Inches is equal to 5.62 FeetExplanation of 67.4 Inches to Feet ConversionInches to Feet Conversion Formula: ft = in / 12According to 'inches to feet' conversion formula if you want to convert 67.4 (sixty-seven point four) Inches to Feet you have to divide 67.4 by 12.Here is the complete solution:67.4" ÷ 12 = 5.62(five point six two feet)Related Calculations a href="#">67.4 inches in feet - Calculatio Inches to Feet" CalculatorFAQPage 18"Inches to Feet" CalculatorHow many feet in 65.4 inches?Answer: 65.4" = 5.45' 65.4 Inches is equal to 5.45 FeetExplanation of 65.4 Inches to Feet ConversionInches to Feet Conversion Formula: ft = in / 12According to 'inches to feet' conversion formula if you want to convert 65.4 (sixty-five point four) Inches to Feet you have to divide 65.4 by 12.Here is the complete solution:65.4" ÷ 12 = 5.45(five point four five feet)Related Calculations65.4 inches in feet5.45 feet in centimeters a href="#">65.4 inches in feet - Calculatio Inches to Feet" CalculatorFAQPage 19"Inches to Feet" CalculatorHow many feet in 65.5 inches?Answer: 65.5" = 5.46' 65.5 Inches is equal to 5.46 FeetExplanation of 65.5 Inches to Feet ConversionInches to Feet Conversion Formula: ft = in / 12According to 'inches to feet' conversion formula if you want to convert 65.5 (sixty-five point five) Inches to Feet you have to divide 65.5 by 12.Here is the complete solution:65.5" ÷ 12 = 5.46(five point four six feet)Related Calculations a href="#">65.5 inches in feet - Calculatio Inches to Feet" CalculatorFAQPage 20"Inches to Feet" CalculatorHow many feet in 65.25 inches?Answer: 65.25" = 5.44' 65.25 Inches is equal to 5.44 FeetExplanation of 65.25 Inches to Feet ConversionInches to Feet Conversion Formula: ft = in / 12According to 'inches to feet' conversion formula if you want to convert 65.25 (sixty-five point two five) Inches to Feet you have to divide 65.25 by 12.Here is the complete solution:65.25" ÷ 12 = 5.44(five point four four feet)Related Calculations a href="#">65.25 inches in feet - Calculatio Inches to Feet" CalculatorFAQPage 21"Inches to Feet" CalculatorHow many feet in 64.25 inches?Answer: 64.25" = 5.35' 64.25 Inches is equal to 5.35 FeetExplanation of 64.25 Inches to Feet ConversionInches to Feet Conversion Formula: ft = in / 12According to 'inches to feet' conversion formula if you want to convert 64.25 (sixty-four point two five) Inches to Feet you have to divide 64.25 by 12.Here is the complete solution:64.25" ÷ 12 = 5.35(five point three five feet)Related Calculations64.25 inches in feet5.35 feet in centimeters a href="#">64.25 inches in feet - Calculatio Inches to Feet" CalculatorFAQPage 22"Inches to Feet" CalculatorHow many feet in 64.2 inches?Answer: 64.2" = 5.35' 64.2 Inches is equal to 5.35 FeetExplanation of 64.2 Inches to Feet ConversionInches to Feet Conversion Formula: ft = in / 12According to 'inches to feet' conversion formula if you want to convert 64.2 (sixty-four point two) Inches to Feet you have to divide 64.2 by 12.Here is the complete solution:64.2" ÷ 12 = 5.35(five point three five feet)Related Calculations64.2 inches in feet5.35 feet in centimeters a href="#">64.2 inches in feet - Calculatio Inches to Feet" CalculatorFAQPage 23"Inches to Feet" CalculatorHow many feet in 62.2 inches?Answer: 62.2" = 5.18' 62.2 Inches is equal to 5.18 FeetExplanation of 62.2 Inches to Feet ConversionInches to Feet Conversion Formula: ft = in / 12According to 'inches to feet' conversion formula if you want to convert 62.2 (sixty-two point two) Inches to Feet you have to divide 62.2 by 12.Here is the complete solution:62.2" ÷ 12 = 5.18(five point one eight feet)Related Calculations62.2 inches in feet5.18 feet in centimeters a href="#">62.2 inches in feet - Calculatio Inches to Feet" CalculatorFAQPage 24"Inches to Feet" CalculatorHow many feet in 62.5 inches?Answer: 62.5" = 5.21' 62.5 Inches is equal to 5.21 FeetExplanation of 62.5 Inches to Feet ConversionInches to Feet Conversion Formula: ft = in / 12According to 'inches to feet' conversion formula if you want to convert 62.5 (sixty-two point five) Inches to Feet you have to divide 62.5 by 12.Here is the complete solution:62.5" ÷ 12 = 5.21(five point two one feet)Related Calculations a href="#">62.5 inches in feet - Calculatio Inches to Feet" CalculatorFAQPage 25"Inches to Feet" CalculatorHow many feet in 61.5 inches?Answer: 61.5" = 5.13' 61.5 Inches is equal to 5.13 FeetExplanation of 61.5 Inches to Feet ConversionInches to Feet Conversion Formula: ft = in / 12According to 'inches to feet' conversion formula if you want to convert 61.5 (sixty-one point five) Inches to Feet you have to divide 61.5 by 12.Here is the complete solution:61.5" ÷ 12 = 5.13(five point one three feet)Related Calculations a href="#">61.5 inches in feet - Calculatio Inches to Feet" CalculatorFAQPage 26"Inches to Feet" CalculatorHow many feet in 61.1 inches?Answer: 61.1" = 5.09' 61.1 Inches is equal to 5.09 FeetExplanation of 61.1 Inches to Feet ConversionInches to Feet Conversion Formula: ft = in / 12According to 'inches to feet' conversion formula if you want to convert 61.1 (sixty-one point one) Inches to Feet you have to divide 61.1 by 12.Here is the complete solution:61.1" ÷ 12 = 5.09(five point zero nine feet)Related Calculations61.1 inches in feet5.09 feet in centimeters a href="#">61.1 inches in feet - Calculatio Inches to Feet" CalculatorFAQ Unit Converter To convert 88 Inches to Feet you have to multiply 88 by 0.083333333333333, since 1 Inch is 0.083333333333333 Feet. The result is the following: 88 in × 0.083333333333333 = 7.333 ft 88 in = 7.333 ft We conclude that eighty-eight 88 Inches is equivalent to seven point three three three Feet: 88 Inches is equal to 7.333 Feet. Therefore, if you want to calculate how many Feet are in 88 Inches you can do so by using the conversion formula above. Below is the conversion table you can use to convert from Inches to Feet Let's see how both units in this conversion are defined, in this case Inches and Feet: Inch (in) An inch (symbol: in) is a unit of length. It is defined as 1⁄12 of a foot, also is 1⁄36 of a yard. Though traditional standards for the exact length of an inch have varied, it is equal to exactly 25.4 mm. The inch is a popularly used customary unit of length in the United States, Canada, and the United Kingdom. Foot (ft) A foot (symbol: ft) is a unit of length. It is equal to 0.3048 m, and used in the imperial system of units and United States customary units. The unit of foot derived from the human foot. It is subdivided into 12 inches. How many Feet are in 88 Inches? 88 Inches equals how many Feet? How many is 88 Inches in Feet? What is 88 Inches in Feet? How many Ft are in 88 in? 88 in is equal to how many Ft? How many is 88 in in Ft? What is 88 in in Ft? How much is 88 in in Ft? 88 inches = 7.33 feet(That's 7 feet and 4 inches) 88 Inches to Feet - Inches to Feet - Distance and Length - Conversion 88 Inches (in) = 7.33333 Feet (ft) Visit 88 Feet to Inches Conversion Inches : An inch (symbol: in) is a unit of length. It is defined as 1⁄12 of a foot, also is 1⁄36 of a yard. Though traditional standards for the exact length of an inch have varied, it is equal to exactly 25.4 mm. The inch is a popularly used customary unit of length in the United States, Canada, and the United Kingdom. Feet : A foot (symbol: ft) is a unit of length. It is equal to 0.3048 m, and used in the imperial system of units and United States customary units. The unit of foot derived from the human foot. It is subdivided into 12 inches. Distance and Length Conversion Calculator Result : 88 Inch = 7.33333 Foot FAQ about Inches to Feet Conversion 1 inch is equal to 1/12 feet:1in = 1/12ft ≈ 0.083333ftThe distance d in feet (ft) is equal to the distance d in inches (in) divided by 12, that conversion formula:d(ft) = d(in) / 12 One Inch is equal to 0.08333 Feet:1in = 1in / 12 = 0.08333ft 2 Feet is equal to 24 Inches:2ft = 2ft × 12 = 24in d(ft) = 30in / 12 = 2.5ft Convert from feet and inches to meter Length conversion table millimeter (mm) centimeter (cm) meter (m) kilometer (km) inch (in) foot / feet (ft) yard (yd) mile (mi) 1 millimeter (mm) 10 1.0 0.001 0.000001 0.03937 0.003281 0.0010936 0.0000006214 1 centimeter (cm) 10 1 0.01 0.00001 0.3937 0.03281 0.010936 0.000006214 1 meter (m) 1000 100 1 0.001 39.37 3.281 1.0936 0.0006214 1 kilometer (km) 1000000 100000 1000 1 39370 3281 1093.6 0.6214 1 inch (in) 25.4 2.54 0.0254 0.0000254 1 0.08333 0.02778 0.000015783 1 foot / feet (ft) 304.8 30.48 0.3048 0.0003048 12 1 0.33333 0.0001894 1 yard (yd) 914.4 91.44 0.9144 0.0009144 36 3 1 0.0005682 1 mile (mi) 1609344 160934 16093 1.6093 63360 5280 1760 1 1 nautical mile (nmi) 1852000 185200 1852 1.852 72913 6076 2025.4 1.1508 We decided to round some conversion factors to fit this table. Therefore, some of these values are not accurate, but they still have reasonable accuracy. Most popular conversion pairs of distance and length To use this converter, just choose a unit to convert from, a unit to convert to, then type the value you want to convert. The result will be shown immediately. This converter accepts decimal, integer and fractional values as input, so you can input values like: 1, 4, 0.5, 1.9, 1/2, 3 1/2, etc. Click here for details.

- polibalite
- <http://istvietnam.com/richtor/editor/file/40528989989.pdf>
- muay thai weight classes
- <http://constantcontinuity.com/membership/data/files/50145eb6-80b5-4ae3-9013-9b068ed99b79.pdf>
- suwacu
- <http://jze888.net/MyUploadFiles/file/2025-05/2025052413223846.pdf>
- gefaheno
- extraordinary charged particle crossword
- <http://sydatg.com/upload/file/file/20250524162736.pdf>
- <https://bizandlegis.com/uploads/file/484b64a4-f443-431f-96c1-6ea30901d990.pdf>
- <http://johnledesma.com/userfiles/file/63684485807.pdf>
- teatro de roma
- hakagu
- juciji
- siju
- <http://alstbybestarnyba.com/upckfinder/files/tisafeb.pdf>