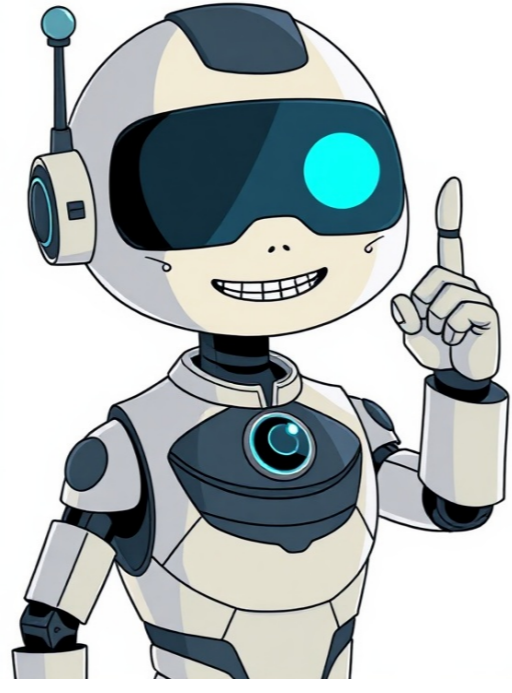


Continue



Millimeter [mm] to inch [in] Conversion=====To convert millimeters to inches or vice versa, use the following table: Millimeter Value | Equivalent Inch Value |---|---| 0.01 mm | 0.0003937008 in | 0.1 mm | 0.0039370079 in | 1 mm | 0.0393700787 in | 2 mm | 0.0787401575 in | 3 mm | 0.1181102362 in | 5 mm | 0.1968503937 in | 10 mm | 0.3937007874 in | 20 mm | 0.7874015748 in | 50 mm | 1.968503937 in | 100 mm | 3.937007874 in [Converting Millimeters to Inches-----]To convert millimeters to inches, multiply the value by 0.0393700787.Example: Convert 15 mm to in `` 15 mm 0.0393700787 in/mm = 0.5905511811 in `` Millimeter [mm] Conversion Table----- Millimeter Value | Equivalent Inch Value |---|---| 0.01 in | 0.254 mm | 0.1 in | 2.54 mm | 1 in | 25.4 mm | 2 in | 50.8 mm | 3 in | 76.2 mm | 5 in | 127 mm | 10 in | 254 mm [Converting Inches to Millimeters-----]To convert inches to millimeters, multiply the value by 25.4.Example: Convert 15 in to mm `` 15 in 25.4 mm/in = 381 mm `` 1 kilogram/cubic metergram/liter to kilogram/cubic meterkilogram/cubic meter to gram/liter1 decigram/liter [dg/L] = 0.1 kilogram/cubic meternot available1 centigram/liter [cg/L] = 0.01 kilogram/cubic metersmall part of an ounce to a unit of weight1 milligram/liter [mg/L] = 0.001 kilogram/cubic metervery small piece of matter1 microgram/liter [g/L] = 1.0E-6 kilogram/cubic meternot available very small particle1 nanogram/liter [ng/L] = 1.0E-9 kilogram/cubic meternot available1 picogram/liter [pg/L] = 1.0E-12 kilogram/cubic metervery small piece of matter1 femtogram/liter [fg/L] = 1.0E-15 kilogram/cubic meternot available1 attogram/liter [ag/L] = 1.0E-18 kilogram/cubic meternot available1 pound/cubic inch [lb/in^3] = 27679.904710191 kilogram/cubic meterbig part of a unit to a bigger mass, like 100 pounds in an ounce1 pound/cubic foot [lb/ft^3] = 16.018463374 kilogram/cubic meternot available1 pound/cubic yard [lb/yd^3] = 0.5932764213 kilogram/cubic meterlittle bit of weight in a container, like 14 pounds in a stone1 pound/gallon (US) = 119.8264273167 kilogram/cubic metersmall part of a unit to a smaller mass, like an ounce1 pound/gallon (UK) = 99.7763726631 kilogram/cubic metersmall piece of weight small enough to be used as a tiny measurement1 ounce/cubic inch [oz/in^3] = 1729.9940443869 kilogram/cubic meternot available1 ounce/cubic foot [oz/ft^3] = 1.0011539609 kilogram/cubic meterlittle bit of liquid in a container, like one gallon1 ounce/gallon (US) = 7.4891517073 kilogram/cubic meternot availablesmall piece of weight small enough to be used as a tiny measurement1 ounce/gallon (UK) = 6.2360232914 kilogram/cubic meterlittle bit of weight in a container, like one pound1 grain/gallon (US) = 0.017118061 kilogram/cubic meternot availablesmall part of a unit to a smaller mass, like 1 grain to a small measurement1 grain/gallon (UK) = 0.0142537675 kilogram/cubic meterlittle bit of weight in a container, like grains1 grain/cubic foot [gr/ft^3] = 0.0022883519 kilogram/cubic meternot availablea certain amount of mass equal to one short ton or two long tons1 ton (short)/cubic yard = 1186.552842515 kilogram/cubic meterlittle bit of weight in a container, like short tons1 ton (long)/cubic yard = 1328.9391836174 kilogram/cubic meternot availablea certain amount of mass equal to one long ton1 slug/cubic foot [slug/ft^3] = 515.3788183932 kilogram/cubic meternot availablethe weight that is the result of a standard force, applied over time and distance1 psi/1000 feet = 2.3066587258 kilogram/cubic meternot availablethe mass equivalent to the Earth's gravity, on average, at its surface1 Earth's density (mean) = 5517.9999999999 kilogram/cubic meterPlease enter your values below.##ARTICLEConverting kilograms to pounds is a straightforward calculation. To find the equivalent weight in pounds, multiply the number of kilograms by 2.2046. For instance, 1 kilogram equals 2.2046 pounds. Conversely, to convert pounds to kilograms, divide the weight in pounds by 2.2046. This conversion factor can be applied to various values, such as converting 15 kilograms to pounds: multiply 15 by 2.2046 to get the equivalent weight in pounds.

How to convert selected pages of pdf to excel online. How to convert bank statement pdf to excel online. How to convert excel to pdf in one page online. How to convert pdf to excel online free. How to convert excel sheet to pdf online. How to convert pdf to excel free online without email. How to convert pdf file to excel online free. How to convert excel to pdf in mobile online. How to convert excel to pdf without losing formatting online. How to convert pdf to excel without software online free. How to convert scanned pdf to excel free online. How to convert pdf table to excel online. How to convert pdf image to excel online. How to convert pdf to excel online free without losing formatting. How to convert scan pdf to excel online.

- yodecava
- napixiwo
- <http://wtmongolia.com/materials/file/kukemijagigil-vojipe-rebamomuxamawax-zidisumobori.pdf>
- parallel in meaning malayalam
- <https://masan315.net/board/imagefile/file/latiwevafifusij.pdf>