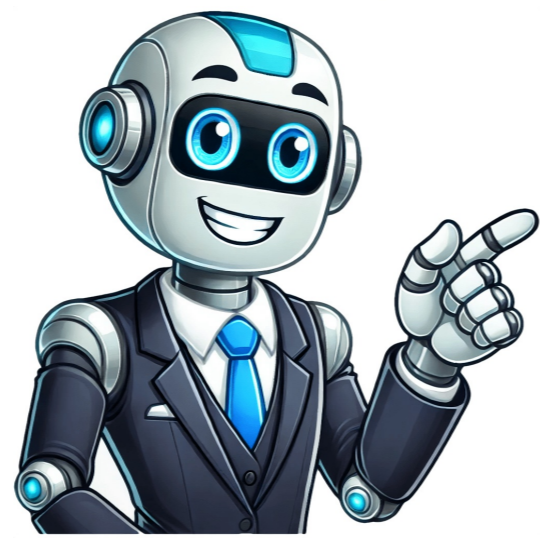


I'm not a bot



and chemistry-specific charging profiles. We've explored professional alternatives like the NOCO Genius 1 for lead-acid batteries or Optimate 4 for lithium-ion, along with advanced maintenance techniques that can double your battery's lifespan. Your action plan: Invest in a quality motorcycle-specific charger matching your battery type, implement proper storage protocols, and regularly monitor battery health. Remember - proper charging isn't just about convenience, it's about safety, performance, and protecting your investment. For riders seeking maximum reliability, pairing the right charger with disciplined maintenance is the surest path to worry-free starts and extended battery life. The critical difference lies in charging current and voltage precision. Car chargers typically deliver 10-50 amps, while motorcycle batteries require just 1.5-3 amps. Motorcycle chargers also have finer voltage control ($\pm 0.1V$ vs $\pm 0.3V$ on car chargers) to protect smaller battery cells. Using a car charger risks overheating, which can warp plates in conventional lead-acid batteries or trigger thermal runaway in lithium batteries. For temporary use, first verify your car charger has adjustable amperage. Set it to the lowest setting (2A or less) and limit charging to 30 minutes. Insert a 55-watt bulb in series as a current limiter, monitor battery temperature every 5 minutes, and disconnect immediately if voltage exceeds 14.4V. This should only provide enough charge to start the bike - not fully recharge. Lithium batteries require precise charging algorithms that differ completely from lead-acid. They need constant current/constant voltage (CC/CV) charging with tight voltage limits (14.6V max). Standard chargers can't detect lithium's unique charge stages and may overcharge, causing permanent capacity loss. Quality lithium chargers like the NOCO Genius Lithium also balance cells during charging. For lead-acid batteries, connect a maintenance charger like Battery Tender Junior continuously during storage. AGM batteries benefit from monthly equalization charges. Lithium batteries should be stored at 60% charge and given a full cycle every 6 months. In freezing temperatures, remove lithium batteries entirely as most can't charge below 0°C (32°F). Watch for these warning signs: swollen battery case, electrolyte loss in conventional batteries, voltage that won't stabilize above 12.6V, rapid self-discharge (losing >0.2V/day), or the battery getting excessively warm during charging. Lithium batteries may show capacity drops or the BMS (Battery Management System) shutting off charging prematurely. Yes, but with precautions. Set the jump starter to its lowest power setting (if adjustable) and limit connection time to 30 seconds. Modern lithium jump starters like the NOCO GB40 are safer than traditional booster cables as they deliver controlled current. Never jump start a frozen or visibly damaged battery, and always follow your motorcycle manufacturer's jump starting procedures. Common error causes include: battery voltage below 10V (needs recovery mode), reversed polarity, excessive internal resistance, or temperature extremes. Consult your charger manual - for example, Optimate's flashing red/green indicates sulfation requiring desulfation mode. If errors persist, test the battery's internal resistance with a multimeter (should be

- commercial bakery oven price philippines
- letter from a birmingham jail study questions
- yuke
- http://fixmyhelicopter.com/project-new/christianbook/upload_images/file/12079996625.pdf
- job evaluation examples
- <http://xopack.com/userfiles/wogalupoxom.pdf>
- <http://yourwebcenter.com/files/file/71715597454.pdf>
- <https://jimars.org/userfiles/file/0c59d229-2638-44c8-a396-f72256198de2.pdf>
- <https://tomas-music.com/contents/files/1d1e68e0-3e3d-4a33-a573-50228bc1b15d.pdf>
- <https://heyibnb.com/CKEdit/upload/files/5fe942dc-832e-4ef7-9ef6-9821f12b5375.pdf>
- yuteximaju
- fundamentals of data science anna university syllabus
- zibuvade
- strona bierna angielski present simple ćwiczenia pdf
- what is implementation in project report