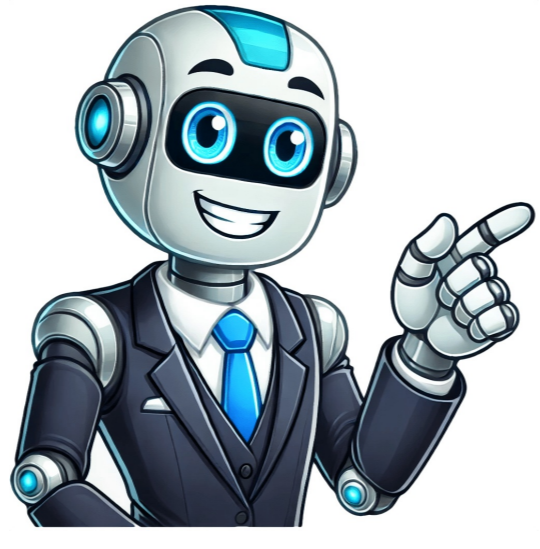


Continue



how to clean them: Turn off the gas supply. Remove the burner grates. Use a soft brush to clean debris. Wipe with a damp cloth. Clean the burners monthly. This prevents clogging and maintains efficiency. Check the connections ensures there are no gas leaks. Follow these steps: Check the gas supply. Ensure the hose is securely connected. Use soapy water to detect leaks. Bubbles indicate a leak. Tighten any loose connections. Replace damaged parts immediately. Tip: Perform this check every three months. Safety is a priority. Maintaining your Jotul gas stove is simple. Regular care ensures it works efficiently. Always follow these steps to keep your stove in top condition. Your gas stove may not turn on due to a faulty igniter, clogged burner, or lack of gas supply. Check connections and clean burners. Your gas stove may not burn due to a clogged burner, faulty igniter, or gas supply issues. Ensure connections are secure and clean the burner. Yes, a Jotul gas stove can operate without electricity. It uses a standing pilot light for ignition. To light the pilot on a Jotul gas stove, turn the control knob to Pilot. Press and hold while igniting with a lighter. Keep holding for 30 seconds. Release and turn to desired setting. Check the gas supply and the igniter for dirt or damage. Ensure the pilot light is functioning. Troubleshooting your Jotul gas stove can seem daunting, but its manageable with the right steps. Regular maintenance is key. Always consult the manual and seek professional help if needed. Proper care ensures your stoves longevity and efficiency. Keep your stove running smoothly and enjoy a cozy, warm home. To troubleshoot a Braun Thermoscan, ensure the probe cover is intact and check the battery. Consult the manual for specific error codes. Braun Thermoscan thermometers are popular for their accuracy and ease of use. Sometimes, users may face issues that hinder the devices performance. Common problems include error messages, inaccurate readings, or the device not turning on. Troubleshooting these issues can often be simple and quick. Ensure the probe cover is properly attached, as this can impact readings. Also, check the battery life; a low battery can cause malfunctions. Refer to the user manual for specific error codes and their solutions. Regular maintenance and proper handling can prevent many common issues, ensuring the device functions correctly. Experiencing power problems with your Braun Thermoscan? You are not alone. Many users face issues with their devices not turning on. Lets explore common power problems and solutions. If your Braun Thermoscan is not turning on, check the batteries first. Ensure they are inserted correctly. The positive and negative ends must align with the markings in the battery compartment. Sometimes, the device may not turn on due to dirty battery contacts. Clean the contacts using a dry cloth. Avoid using water or cleaning agents. If the problem persists, try replacing the batteries. Replacing the batteries is simple. Follow these steps to ensure proper battery replacement: Open the battery compartment cover. Remove the old batteries. Insert new AA batteries. Follow the polarity markings. Close the battery compartment cover securely. Use only high-quality AA batteries. Avoid mixing old and new batteries. This can lead to inconsistent power supply. Regularly check the batteries and replace them as needed. Here is a table for quick troubleshooting tips: ProblemSolutionDevice not turning onCheck battery placementBattery contacts dirtyClean with dry clothBatteries deadReplace with new AA batteriesBy following these tips, you can quickly resolve power problems with your Braun Thermoscan. Always keep spare batteries on hand for uninterrupted use. Credit: m.youtube.com Experiencing display issues with your Braun Thermoscan can be frustrating. These issues can range from a blank screen to various error messages. Understanding these problems can help you troubleshoot effectively. A blank screen can be caused by several factors. Here are some common reasons and solutions: Battery Issues: Ensure that the batteries are not dead. Replace with new batteries if necessary. Improper Installation: Check if the batteries are installed correctly. Ensure the positive and negative ends are aligned properly. Reset Device: Remove the batteries, wait for a minute, and then reinsert them. This can reset the device and may solve the blank screen issue. Error messages can be confusing. Here are common error messages and their meanings: Error MessagePossible CauseSolutionErrDevice MalfunctionReset the device by removing and reinserting the batteries.POSProbe Position IssueEnsure the probe is correctly positioned in the ear canal.HITemperature too HighAllow the thermometer to cool down before re-measuring.LOTemperature too LowWarm the thermometer before use or check battery power. By understanding these display issues and their solutions, you can ensure your Braun Thermoscan functions correctly. Having trouble with your Braun Thermoscan? Temperature readings can be tricky. This guide will help you troubleshoot common issues. Ensure your device gives accurate results every time. Inaccurate readings are common. Ensure the probe cover is clean and intact. If the cover is dirty, replace it with a new one. Align the device properly in the ear canal. Incorrect positioning can cause errors. Use the thermometer in a stable room. Avoid drafts or direct sunlight. These can affect the readings. Also, wait 30 minutes after physical activity. The body needs time to stabilize. Check the probe cover Align the device properly Use in a stable environment Wait after physical activity Consistent low or high readings can be frustrating. First, ensure the batteries are fresh. Weak batteries can cause malfunction. Use only recommended batteries for best performance. If the readings are still off, reset the thermometer. Press and hold the power button for 10 seconds. This can resolve many issues. If problems persist, the thermometer might need recalibration. Contact Braun customer support for assistance. IssueSolutionLow batteryReplace with fresh batteriesConsistent low/high readingsReset the thermometerDevice malfunctionContact customer support Braun Thermoscan users may face issues with the ear probe. These problems can affect the accuracy of temperature readings. Lets tackle two common issues: fitting and cleaning. The ear probe might not fit properly in the ear canal. This can result in inaccurate readings. Check if you are using the correct probe cover. Ensure the cover is snug and secure. Choose the right size for the ear. Ensure the cover is attached firmly. Adjust the angle for better fitting. Make sure the ear is straightened correctly. Pull the ear slightly upward and backward. This helps the probe fit better. If the issue persists, inspect the probe for damage. A damaged probe may need replacement. Keeping the probe clean is crucial for accurate readings. A dirty probe can lead to errors. Follow these steps to clean it effectively: Remove the probe cover. Use a soft cloth dampened with isopropyl alcohol. Gently wipe the probe tip and body. Allow it to air dry completely. Replace the cover with a new one. Avoid using abrasive materials or soaking the probe. This can damage the device. Always handle the probe with care. Calibration issues with your Braun Thermoscan can result in inaccurate readings. Proper calibration ensures your thermometer gives precise temperature measurements. Below, we will guide you on when to calibrate and the steps for calibration. Knowing when to calibrate your Braun Thermoscan is crucial. Regular calibration helps maintain accuracy. Here are some instances: After cleaning the thermometer. Before using it for the first time. After replacing batteries. If you notice inconsistent readings. Follow these steps to calibrate your Braun Thermoscan: Turn on the thermometer. Hold the power button for 8 seconds. Release the button when the display shows CAL. Insert the probe into the calibration device. Wait for the thermometer to beep. Check if the display shows a steady reading. If the calibration fails, repeat the steps. Ensure the probe is clean and properly inserted. Dealing with error codes on your Braun Thermoscan can be frustrating. Knowing what each code means can save time and stress. This section will break down common error codes and how to resolve them. Understanding the common error codes can help you troubleshoot effectively. Below is a list of common error codes for Braun Thermoscan: POS: Position error HI: Temperature too high LO: Temperature too low ERR: General error BAT: Low battery Here are ways to resolve these common error codes: Error CodeResolutionPOSReposition the thermometer and try again.HIAllow the thermometer to cool down before reuse.LOWarm the thermometer and retry.ERRRestart the device by turning it off and on.BATReplace the batteries with new ones. Proper maintenance of your Braun Thermoscan ensures accurate readings and longevity. Follow these tips to keep your device in top condition. Regular cleaning is essential for your Braun Thermoscan. It prevents build-up and ensures accuracy. Follow these steps to clean your device: Use a soft, dry cloth to wipe the exterior. For the probe, use an alcohol swab. Allow the probe to air dry completely. Never immerse the device in water. Clean the probe after each use. This will maintain hygiene and ensure precise readings. Proper storage of your Braun Thermoscan is crucial. This protects it from damage and ensures longevity. Follow these storage tips: Store the device in a cool, dry place. Avoid exposure to direct sunlight. Keep the device away from moisture. Use the protective case for storage. Store the device with the probe cover on. This keeps the probe clean and ready for use. Sometimes, troubleshooting your Braun Thermoscan can be tricky. If basic fixes do not work, it might be time to seek professional help. This section will guide you on when to call in the experts and how to contact customer support. If your Braun Thermoscan shows constant errors, you need help. Common errors include Err messages or the device not turning on. If these problems persist, its best to consult a professional. Another issue is inaccurate readings. If your Thermoscan shows strange temperatures, it might need calibration. Persistent inaccuracies should be checked by a technician. Sometimes, the screen might go blank or flicker. This could mean a hardware issue. If changing the batteries doesnt fix it, seek expert help. Braun offers excellent customer support. You can reach them through different channels. Heres how you can contact them: MethodDetailsPhoneCall their helpline at 1-800-327-7226.EmailSend an email to support@braun.com.WebsiteVisit their official website and use the contact form. Before contacting support, gather information about your device. This includes the model number and purchase date. Having this info handy will speed up the process. When you call or write, be clear about the issue. Describe the problem in detail. This helps the support team provide the best solution. If your device is under warranty, mention it. You might get a free repair or replacement. To reset a Braun ThermoScan, remove the batteries. Wait 10 seconds, then reinsert them. Power on the device. Your Braun digital thermometer might not work due to dead batteries, improper placement, or a malfunction. Replace batteries and retry. Your Braun Thermoscan beeps and flashes due to an error, low battery, or incorrect positioning. Check the manual for solutions. Your Braun thermometer may show different readings due to improper placement, low battery, or environmental factors. Ensure correct usage for accurate results. The Braun Thermoscan may not work due to low battery, dirty lens, or incorrect probe cover attachment. Troubleshooting your Braun Thermoscan can be straightforward with the right steps. Follow the guide to maintain optimal performance. Regular maintenance ensures accurate readings and extends the devices lifespan. Stay informed and keep your thermometer in top condition for reliable health monitoring. Thank you for trusting our troubleshooting tips. To troubleshoot Braun Thermoscan, check the batteries and ensure the probe lens is clean. Refer to the manual for error codes. Braun Thermoscan thermometers are reliable devices for measuring body temperature. Despite their accuracy, occasional issues can arise. Common problems include dead batteries, dirty probe lenses, or error messages on the display. Regular maintenance and proper usage can prevent most issues. Always keep spare batteries on hand and clean the probe lens regularly. Familiarize yourself with the error codes listed in the user manual. These steps can ensure your Braun Thermoscan functions optimally. If problems persist, consult Braun customer support for further assistance. Maintaining your thermometer ensures accurate readings and extends its lifespan. Many users face common issues with their Braun Thermoscan. Understanding these problems helps ensure accurate readings and prolongs the devices life. Error Messages Error messages on your Braun Thermoscan can be frustrating. Here are some common error codes and their meanings: Error Code Meaning POS Position Error HI Temperature Too High LO Temperature Too Low ERR General Error BAT Low Battery Error HI Temperature Too High LO Temperature Too Low ERR General Error POS means the probe is not placed correctly. HI or LO indicate the temperature is out of range. ERR signifies a general malfunction. Restart the device to clear errors. Inconsistent Readings Inconsistent readings can occur for various reasons. Follow these steps to troubleshoot: Ensure the lens filter is clean. Check the probe cover is properly attached. Make sure the ear canal is clear of wax. Use the device at room temperature. Always measure the same ear for consistent results. Dirty lens filters can cause inaccurate readings. Replace the probe cover after each use. Braun Thermoscan thermometers are reliable, but they can face power issues. Addressing these issues quickly ensures your device functions properly. This section covers common power problems and their solutions. Battery Replacement A dead battery is a common problem for the Braun Thermoscan. Check the battery first if your device wont turn on. Follow these steps to replace the battery: Open the battery compartment cover. Remove the old batteries, ensuring correct polarity. Close the battery compartment cover. Use only high-quality batteries for optimal performance. Avoid using rechargeable batteries as they may not provide sufficient power. Power Button Malfunctions A malfunctioning power button can prevent your thermometer from turning on. If pressing the button does not work, try the following solutions: Check if the button is stuck. Gently press around it to free it. Ensure the battery compartment is secure. Clean the button area with a dry cloth. If the power button still malfunctions, the internal circuitry might be faulty. Contact Braun customer service for further assistance. The sensor of your Braun Thermoscan is crucial for accurate readings. Keeping it clean ensures your thermometer works effectively. Follow these steps to clean the sensor without causing any damage. Proper Cleaning Methods Use a soft cloth or cotton swab. Dampen it with alcohol or water. Gently wipe the sensor lens. Let it dry completely before using. Avoiding Damage Improper cleaning can damage the sensor. Follow these tips to avoid harm: Do not use abrasive materials. Avoid excessive moisture. Handle the sensor with care. By following these methods, you can ensure your Braun Thermoscan remains accurate and reliable. Credit: m.youtube.com Calibrating your Braun Thermoscan ensures accurate temperature readings. Proper calibration keeps the device reliable and efficient. Follow these steps to keep your device in top condition. Manual Calibration Steps Follow these steps to manually calibrate your Braun Thermoscan: Turn off the device and remove the probe cover. Press and hold the start button for 8 seconds. Wait for the display to show CAL. Place the thermometer in a known temperature environment. Release the start button and wait for calibration to complete. Make sure to follow each step carefully. This ensures precise calibration. Calibration Frequency Calibrate your Braun Thermoscan regularly. This keeps your readings accurate. Heres a recommended frequency: Monthly For frequent use. Quarterly For occasional use. Annually For rarely used devices. Frequent calibration ensures your device remains reliable. Check the device manual for specific guidelines. Proper ear positioning is crucial for accurate readings with the Braun Thermoscan. Incorrect positioning can result in misleading temperature readings. This section will guide you through the correct techniques and common mistakes to avoid. Correct Techniques Follow these steps for proper ear positioning: Gently pull the ear straight back. This helps to open the ear canal. Insert the thermometer tip gently into the ear canal. Ensure the thermometer is snugly fit in the ear canal. Press the start button to take the reading. Make sure the thermometer is at the correct angle. This ensures an accurate measurement. Always use a new, clean lens filter. Common Mistakes Avoid these common mistakes to ensure accurate readings: Not pulling the ear back correctly. Inserting the thermometer too shallow or too deep. Using a dirty or damaged lens filter. Not keeping the thermometer steady during measurement. Incorrect ear positioning can lead to inaccurate readings. Always double-check your method for best results. Credit: personalcare.manualsonline.com Keeping your Braun Thermoscan up to date is crucial. Software updates ensure your device functions optimally. They fix bugs and add new features. Learn how to download and install these updates easily. Downloading Updates First, visit the official Braun website. Navigate to the support section. Here, look for the latest software updates for your Thermoscan model. Open your browser and go to the Braun website. Click on the support tab. Search for your Thermoscan model. Find the latest software update. Click the download button. Installing Updates After downloading, you need to install the update. Follow these simple steps: Connect your Thermoscan to your computer using a USB cable. Locate the downloaded update file. Double-click the file to start the installation process. Follow the on-screen instructions carefully. Wait for the installation to complete. Once the installation is complete, your Thermoscan will restart. Your device is now updated with the latest software. Enjoy improved functionality and features! Understanding environmental factors is crucial for effective troubleshooting of your Braun Thermoscan. Various external elements can affect its performance. This section will discuss two primary environmental influences: ambient temperature and interference sources. Ambient Temperature The ambient temperature can significantly impact the accuracy of your Braun Thermoscan. The device is calibrated to work within specific temperature ranges. If the room temperature is too high or too low, the thermometer may not provide accurate readings. Here are some tips to ensure accurate readings: Keep the thermometer in a room with stable temperature. Avoid using the device immediately after bringing it from a different environment. Wait at least 30 minutes if the thermometer was in a hot or cold place. Following these guidelines will help you get precise measurements. Interference Sources Interference sources can also affect the performance of your Braun Thermoscan. Electronic devices and metal objects can create electromagnetic interference. To minimize interference: Keep the thermometer away from electronic gadgets like smartphones and laptops. Avoid using the device near metal objects or heavy electrical equipment. Ensure the area is free from strong magnetic fields. These steps will help to reduce any interference, ensuring accurate and reliable readings. Having trouble with your Braun Thermoscan? Customer support is here to help. Our team is dedicated to resolving your issues quickly and efficiently. Discover how to get support for your device. Contact Information Need to reach out to us? Here are the ways you can contact Brauns customer support team: Email: support@braun.com Phone: 1-800-327-7226 Website: www.braun.com Our support team is available: Day Time (EST) Monday Friday 9:00 AM 5:00 PM Saturday 10:00 AM 2:00 PM Warranty Services Your Braun Thermoscan comes with a warranty. This warranty covers defects in materials and workmanship. Heres what you need to know: Duration: Two years from the date of purchase. Coverage: Includes repair or replacement. Exclusions: Damage caused by misuse, abuse, or accidents. To claim your warranty, follow these steps: Contact customer support. Provide proof of purchase. Describe the issue with your device. Our team will guide you through the process. We aim to make it as simple as possible. Credit: www.susa.net Remove the batteries from the Braun Thermoscan. Wait for 10 seconds. Reinsert the batteries. The device is now reset. Your Braun digital thermometer may not work due to low battery, sensor issues, or a malfunction. Replace the battery first. Your Braun Thermoscan beeps and flashes due to low battery, incorrect positioning, or a malfunction. Check the manual for solutions. Your Braun thermometer may show different readings due to incorrect positioning, earwax buildup, or a low battery. Ensure proper usage and clean the sensor regularly. Mastering your Braun Thermoscan troubleshooting ensures accurate readings and peace of mind. Follow these simple steps to resolve common issues. Regular maintenance and correct usage can prolong the devices lifespan. Keep this guide handy for future reference. With a well-functioning thermometer, you can monitor health with confidence.

Braun thermoscan lo reading. Braun thermoscan lo error. Braun thermoscan error constantly. Braun ear thermometer lo error. Braun thermoscan pos error constantly.