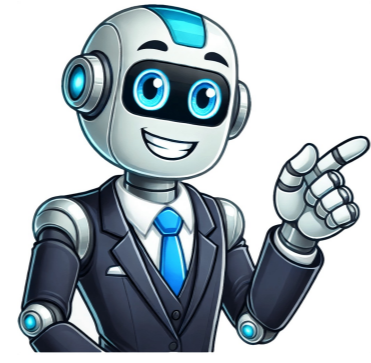


I'm not a robot



Tech Of Robotics/TechnologyBasics - Advertisement - Robotics is the branch of technology that deals with the design, construction, operation, and use of robots, as well as computer systems for their control, sensory feedback, and information processing. These technologies deal with automated machines that can take the place of humans in dangerous environments or manufacturing processes, or to improve an appearance, behavior, and/or cognition. The development of robots has been in the past in tasks without human intervention, as well as in the development of those that are able to replicate human mind. This has led to the creation of a wide variety of robots, from simple machines that can perform repetitive tasks to highly advanced robots that can think and learn. Types of Robotics Industrial robots Industrial robots are used in manufacturing, assembly, and other industrial processes. They are typically large, highly precise machines that are programmed to perform specific tasks such as welding, painting, and packaging. They are used to improve efficiency, reduce costs, and improve the quality of products. Service robotics: Service robots are used in domestic and personal settings, such as vacuuming robots and personal assistants. They are designed to assist people with everyday tasks, such as cleaning, cooking, and providing information. They are also used in healthcare and elderly care facilities to assist with tasks such as lifting and moving patients. Medical robotics: Medical robots are used in surgeries and other medical procedures. They are designed to assist surgeons in performing complex procedures with increased precision and accuracy. They are also used in rehabilitation, physical therapy, and other medical applications. Military robotics: Military robots are used in military operations, such as bomb disposal and surveillance. They are designed to perform tasks that are too dangerous for humans, such as defusing bombs and entering buildings. They are also used for reconnaissance, surveillance, and target acquisition. Space robotics: Space robots are used in space exploration and satellite maintenance. They are designed to operate in the harsh conditions of space and are used to repair and maintain satellites, explore other planets, and perform other tasks. Educational robotics: Educational robots are used to teach programming and engineering principles to students. They are designed to be simple and easy to use and are used in schools and universities to introduce students to the concepts of robotics and programming. Agricultural robotics: Agricultural robots are used to automate tasks in agriculture. They are used for tasks such as planting, harvesting, and monitoring crops. They can also be used for tasks such as soil analysis, crop spraying, and precision farming. Search and rescue robotics: Search and rescue robots are used in natural disasters for search and rescue operations. They are used in extreme conditions and in the search for and rescue victims of natural disasters. They also can be used for finding and mapping the affected area, providing real-time information to rescue teams. Underwater Robotics: Underwater robots are used for tasks such as underwater exploration, oil rig maintenance, and environmental monitoring. They are designed to operate in the harsh conditions of the ocean and are used to explore shipwrecks, study marine life, and perform other tasks. Autonomous vehicles: Autonomous vehicles are vehicles that are capable of operating without human input. They include self-driving cars, drones, and other types of vehicles. They are designed to improve safety, reduce costs, and increase efficiency in transportation. They are also used in various fields like agriculture, logistics, mining, etc. Recommended: Robotics Projects Ideas - Advertisement - Robotics Applications Robotics has a wide range of applications across different industries and sectors. Some of the most notable applications of robotics include: Manufacturing: Robotics is widely used in manufacturing to automate repetitive tasks, increase productivity and improve quality. Robots are used in assembly lines, welding, painting, and other manufacturing processes. Transportation: Self-driving cars, drones, and autonomous vehicles are examples of robotic applications in transportation. They are being developed to improve safety, reduce traffic congestion, and increase efficiency. Healthcare: Robotics technology is increasingly being used in healthcare to assist with surgeries, rehabilitation, and other medical procedures. Robots can also be used to help with tasks such as monitoring patient vital signs and administering medication. Agriculture: Agricultural robots are being used to plant and harvest crops, monitor crop growth, and perform other tasks to increase efficiency and reduce labor costs. Construction: Robotics technology is being used in construction to automate tasks such as bricklaying, concrete pouring, and other labor-intensive tasks. Space Exploration: Robotics technology plays an important role in space exploration as it can be used to explore other planets, moons, and asteroids. Service Robotics: Robots can be used in service industries such as hotels, banks, etc. to provide customer service like answering queries, providing information, and guiding customers. Military and Defense: Robotics technology is being used in military and defense to perform tasks such as surveillance, reconnaissance, and bomb disposal. These are just a few examples of the many ways that robotics technology is being used to improve efficiency, reduce costs, and enhance the quality of life across a wide range of industries. Overall, Robotics has a wide range of applications and has been and will continue to be an important field of technology that has the potential to significantly impact various industries and change the way we live our lives. Advancements in Robotics technology have and will continue to lead to new opportunities, efficiencies, and cost savings. However, the increasing use of robots also raises ethical and societal issues, such as job displacement, which will need to be addressed in the future. Robotics in AI Robotics and artificial intelligence (AI) are closely related fields, with many areas of overlap and integration. Robotics uses AI techniques to enable robots to perceive and understand their environment, make decisions, and carry out tasks autonomously. Some specific ways that AI is used in robotics include: Computer Vision: Robotics often rely on computer vision to perceive and understand their environment, which involves the use of cameras and image processing algorithms to extract information from visual data. Natural Language Processing (NLP): Robotics uses NLP to enable robots to understand and respond to human speech, this can be used in customer service, personal assistance, and other applications. Machine Learning: Robotics uses machine learning techniques to enable robots to learn from experience, adapt to new situations, and improve their performance over time. This can help robots to become more autonomous, flexible, and efficient. Motion Planning: Robotics uses motion planning algorithms to enable robots to navigate and move through their environment in a safe and efficient way. Robotics is also used in AI applications such as Robotics Process Automation (RPA) which uses the capabilities of software robots to automate repetitive tasks. Overall, the integration of AI into robotics has led to the development of more sophisticated and capable robots. Getting started with robotics can be a fun and rewarding experience, even for beginners. Here are some basic steps to help you get started: Learn the basics: Familiarize yourself with the basic concepts and terminology of robotics, including things like sensors, actuators, and control systems. Build a simple robot: Start by building a simple robot using a kit or pre-built platform. This can be a great way to learn the basics of robotics and get a feel for how robots work. Experiment with programming: Learn how to program your robot using a simple programming language like Scratch, Python, or C++. This will help you to understand how robots make decisions and perform tasks. Learn about electronics: Robotics involves the use of electronics, such as sensors and microcontrollers. Learn the basics of electronics and how to use components like LEDs, transistors, and motors. Join a robotics community: Join a local robotics club, attend robotics workshops or competitions, or participate in online communities to learn from more experienced robotics enthusiasts and get feedback on your projects. Stay updated with the latest advancements: Robotics is a rapidly evolving field, so stay updated with the latest advancements and developments in the field. Start with a simple project: Start with a simple project like line following robot, obstacle avoiding robot, etc. Build on what you've learned: As you gain experience, you can start to build more advanced robots and experiment with new technologies, such as artificial intelligence and machine learning. Remember, the key to learning robotics is to have fun and be curious. Robotics is a complex field, but with persistence and dedication, anyone can learn the basics and start building their own robots. History of Robotics The history of robotics can be traced back to ancient times, with the creation of simple machines and automata that were designed to perform specific tasks. However, the modern concept of robotics, as we know it today, began to take shape in the 20th century. Some key milestones in the history of robotics include: 1920: The play 'Rossum's Universal Robots' by Karel Čapek introduced the term 'robot' to the world. 1929: The first industrial robot, named 'Unimate', was created by George Devol. 1954: The first robot to be used in surgery was the PUMA 560, which was developed by Computer Motion. 1983: The first autonomous mobile robot, named 'Genghisis', was developed by the Massachusetts Institute of Technology (MIT). 1986: NASA's Mars rover, Sojourner, was the first robot to be sent to another planet. 2000: The first robot to compete in the DARPA Grand Challenge, a competition for autonomous vehicles, was the 'Sandstorm' built by a team from the Red Team of Carnegie Mellon University. 2014: Amazon introduces a robot, 'Kiva' for inventory management in their warehouse. 2019: Boston Dynamics released the first commercial robot, SpotMini, which is designed for use in a variety of settings, including construction, emergency response, and security. Today, robotics technology continues to evolve and advance, with new applications and uses being developed in fields such as healthcare, agriculture, transportation, and more. Technology Engineering Mechanical Engineering What are some common types of robots? How are robots used in different industries? What are the basic components that make up a robot? How do robots learn to perform tasks? What is artificial intelligence and how does it relate to robots? In what ways can robots be similar to humans? How have robots evolved over time and what advancements have been made? What ethical considerations are associated with the use of robots? How might robots impact the future of work and society? How, if any, automatically operated machine that replaces human effort, though it may not resemble human beings in appearance or perform functions in a humanlike manner. By extension, robotics is the engineering discipline dealing with the design, construction, and operation of robots. The concept of artificial humans predates recorded history (see automaton), but the modern term robot derives from the Czech word robota ("forced labor" or "serf"), used in the play R.U.R. (1920). The play's robots were manufactured humans, heartlessly exploited by factory owners until they revolted and ultimately destroyed humanity. Whether the term robot to the GM factory, or the mechanical was not specified, but the mechanical alternative inspired generations of inventors to build electrical humanoid. The word robotics first appeared in Isaac Asimov's science-fiction story 'Liar!' (1941), in which a robot is mistakenly given the ability to read minds. Along with Asimov's later robot stories, it set a new standard of plausibility about the likely difficulty of developing intelligent robots and the technical and social problems that might result. In his next work, Runaround (1942), Asimov introduced the famous Three Laws of Robotics: 1. A robot may not injure a human being, or, through inaction, allow a human being to come to harm. 2. A robot must obey the orders given it by human beings except where such orders would conflict with the First Law. 3. A robot must protect its own existence as long as such protection does not conflict with the First or Second Law. In 1970, Japanese roboticist Masahiro Mori proposed that as human likeness increases in an object's design, so does one's affinity for the object, giving rise to the phenomenon called the "uncanny valley." According to this theory, when the artificial likeness nears total accuracy, affinity drops dramatically and is replaced by a feeling of eeriness or uncanniness. Affinity then rises again when true human likeness—resembling a living person—is reached. This sudden decrease and increase caused by the feeling of uncanniness creates a "valley" in the level of affinity. This article traces the development of robots and robotics. For further information on industrial applications, see the article automation. (Read Tony Walsh's Britannica essay on killer robots.) Though not humanoid in form, machines with flexible behaviour and a few humanlike physical attributes have been developed for industry. The first stationary industrial robot was the programmable Unimate, an electrically controlled hydraulic heavy lifting arm that could repeat arbitrary sequences of tasks. It was invented in 1954 by the American engineer George Devol and was developed by Unimation Inc., a company founded in 1956 by American engineer Joseph Engelberger. In 1959 a prototype of Unimate was introduced in a General Motors Corporation die-casting factory in Trenton, New Jersey. In 1961 Condec Corp. (after purchasing Unimation the preceding year) destroyed the world's first production-line robot to the GM factory; it had the unusual task for humans of removing and stacking hot metal parts from a die-casting machine. Unimate arms continue to be developed and sold by licensees around the world, with the automobile industry remaining the largest buyer. (Read Sherry Turkle's Britannica essay on robots.) How does a robotic pipeline for bacterial genetics help scientists at University College Cork?A "robotic pipeline" used in bacterial genetics at University College Cork, Cork, Ireland. See all videos for this articleMore advanced computer-controlled electric arms guided by sensors were developed in the late 1960s and 1970s at the Massachusetts Institute of Technology (MIT) and at Stanford University, where they were used with cameras in robotic hand-eye research. Stanford's Victor Scheinman, working with Unimation for GM, designed the first such arm used in industry. Called PUMA (Programmable Universal Machine for Assembly), they have been used since 1978 to assemble automobile subcomponents such as dash panels and lights. PUMA was widely imitated, and its descendants, large and small, are still used for light assembly in electronics and other industries. Since the 1990s small electric arms have become important in molecular biology laboratories, precisely handling test-tube arrays and pipetting intricate sequences of reagents. Mobile industrial robots also first appeared in 1954. In that year a driverless electric cart, made by Barrett Electronics Corporation, began pulling loads around a South Carolina grocery warehouse. Such machines, dubbed AGVs (Automatic Guided Vehicles), commonly navigate by following signal-emitting wires entrenched in concrete floors. In the 1980s AGVs acquired microprocessor controllers that allowed more complex behaviors than those afforded by simple electronic controls. In 1990s a new navigation method became popular for mobile robots: AGVs equipped with a scanning laser triangulation sensor position by measuring reflections from fixed retro-reflectors (at least three of which must be visible from any location). Although industrial robots first appeared in the United States, the business was not there first. Unimation was acquired by Westinghouse Electric Corporation in 1983 and shut down a few years later. Cincinnati Milacron, Inc., the other major American hydraulic arm manufacturer, sold its robotics division in 1990 to the Swedish firm of Assa Brown Boveri Ltd. Adept Technology, Inc., spun off from Stanford and Unimation to make electric arms, is the only remaining American firm. Foreign licensees of Unimation, notably in Japan and Sweden, continue to operate, and in the 1980s other companies in Japan and Europe began to vigorously enter the field. The prospect of an aging population and consequent worker shortage induced Japanese manufacturers to experiment with advanced automation even before it gave a clear return, opening a market for robot makers. By the late 1980s Japan—led by the robotics divisions of Fanuc Ltd., Matsushita Electric Industrial Company Ltd., Mitsubishi Group, and Honda Motor Company Ltd.,—was the world leader in the manufacture and use of industrial robots. High labor costs in Europe similarly encouraged the adoption of robot substitutes, with industrial robot installations in the European Union exceeding Japanese installations for the first time in 2001. Entertainment robotsThe AIBO entertainment robot, model ERS-111. The doglike robot had two microphones and a color camera.Lack of reliable functionality has limited the market for industrial and service robots (built to work in office and home environments). Toy robots, on the other hand, can entertain without performing tasks very reliably, and mechanical varieties have existed for thousands of years. (See automaton.) In the 1980s microprocessor-controlled toys appeared that could speak or move in response to sounds or light. More advanced ones in the 1990s recognized voices and words. In 1999 the Sony Corporation introduced a doglike robot named AIBO, with two dozen motors to activate its legs, head, and tail, two microphones, and a color camera all coordinated by a powerful microprocessor. More lifelike than anything before, AIBOs chased colored balls and even learned to explore and adapt. Although the first AIBOs cost \$2,500, the initial run of 5,000 sold out immediately over the Internet. The roots of Robotics trace back to ancient civilizations' mythologies and automata. However, it was in the mid-20th century that true Robotics began to take shape. The term "Robotics" was coined by Isaac Asimov in the 1940s. and the first industrial robot, Unimate, was introduced in the 1960s, marking the beginning of modern Robotics. Since then, Robotics has witnessed remarkable advancements in technology and diverse applications. The future of automation is Robotics, the field of study and development of autonomous machines that can perform tasks with human-like capabilities. From manufacturing industries to healthcare, from exploration of distant planets to our daily lives, Robotics has found its place as an indispensable tool. In this blog, we will discuss What Is Robotics, exploring its definition, key components, applications, and the exciting prospects it holds for the future. Table of Contents 1) Definition of Robotics? 2) Key components of Robotics? a) Sensors b) Processors c) Actuators d) End effectors 3) Application of Robotics a) Manufacturing b) Healthcare c) Exploration d) Agriculture e) Entertainment 4) Future of Robotics a) Advancements in AI and ML 5. Conclusion Definition of Robotics? Robotics can be defined as the interdisciplinary field that encompasses the design, construction, operation, and use of robots. A robot, in this context, is a programmable machine capable of carrying out tasks autonomously or semi-autonomously, often mimicking human actions and interactions. The world of Robotics play a crucial role in guiding the ethical and safe development of these machines. They can be remotely controlled or operate independently through a combination of sensors, processors, actuators, and programming. Learn more about Robotic Devices Training today and kickstart your career! Key components of Robotics? In the world of Robotics, the seamless structure of various components enables machines to come alive, mimic human actions, and perform tasks that were once confined to our imagination. Let's understand the key components that form the backbone of every robot: Sensors: Imagine a robot as a curious explorer, eager to understand and interact with its surroundings. To do this, it needs to gather information about its environment. This is where sensors come in. They act as the robot's eyes, ears, and touch receptors, allowing it to detect light, sound, temperature, and other environmental cues. Actuators: Once a robot has gathered information, it needs a way to interact with the world. Actuators are the muscles of a robot, converting digital commands into tangible movements and actions in the physical world. They are used in various scenarios, from moving a robot's joints to controlling a prosthetic arm. Processors: The brain of a robot is its processor, which handles the data received from sensors and makes decisions based on that information. It coordinates the robot's actions and ensures that it operates smoothly. End effectors: These are the tools that enable a robot to perform specific tasks with precision. They can be grippers, lasers, or any other specialized tool designed for a particular task. Control algorithms: These algorithms dictate how a robot responds to specific inputs, ensuring precise and coordinated movements. They are the software that makes a robot's actions intelligent and purposeful. Neural networks: Inspired by the human brain, neural networks enable robots to learn from experience and adapt to new situations. They are used in various applications, from image recognition to natural language processing. Path planning: Path planning algorithms determine the optimal route a robot should take to navigate from one point to another while avoiding obstacles and considering environmental constraints. Feedback control: Feedback loops use sensor data to regulate a robot's actions in real-time, enabling precise movements and adjustments to change conditions. h) Speech and language processing: Processors equipped with AI capabilities can interpret human speech, enabling robots to understand and respond to verbal commands. i) Gesture recognition: Powerful processors decode human gestures, allowing robots to interpret non-verbal communication cues and respond accordingly. Actuators: Actuators are the muscles of a robot, converting digital commands into tangible movements and actions in the physical world. a) Electric motors: Widely used in various robots, electric motors generate rotational or linear motion, allowing robots to move their limbs, wheels, and other parts. b) DC motors: Direct current (DC) motors are commonly used in Robotics due to their simplicity and precise control. They are ideal for applications where accuracy and variable speed are crucial. c) Stepper motors: Stepper motors move in discrete steps, making them suitable for tasks that require precise positioning, such as 3D printing and CNC machining. d) Brushless motors: These motors offer higher efficiency and reliability compared to brushed motors, making them well-suited for tasks that demand continuous and high-speed motion. e) Pneumatic and hydraulic actuators: These act as strong and precise sources of force. Pneumatic actuators use compressed air, while hydraulic actuators rely on pressurized fluid to drive movements. End effectors: Analogous to our hands, end effectors are the tools that enable robots to perform specific tasks with precision. a) Grippers: These versatile tools allow robots to grasp, hold, and manipulate objects of varying sizes and shapes. b) Lasers: Laser-based end effectors are employed for cutting, engraving, and even scanning in industries like manufacturing and construction. c) Welding tools: Robots equipped with welding end effectors are used in manufacturing to create precise welds and joints. d) Drilling tools: Robots equipped with drilling end effectors are used in manufacturing to create precise holes and bores. e) Grinding tools: Robots equipped with grinding end effectors are used in manufacturing to smooth and finish surfaces. f) Polishing tools: Robots equipped with polishing end effectors are used in manufacturing to achieve a high-quality finish on surfaces. g) Painting tools: Robots equipped with painting end effectors are used in manufacturing to apply paint and coatings with precision. h) Assembly tools: Robots equipped with assembly end effectors are used in manufacturing to assemble components and products. i) Material handling tools: Robots equipped with material handling end effectors are used in manufacturing to transport and position materials. j) Pick and place tools: Robots equipped with pick and place end effectors are used in manufacturing to pick up and place components with precision. k) Soldering tools: Robots equipped with soldering end effectors are used in manufacturing to assemble electronic components. l) Deburring tools: Robots equipped with deburring end effectors are used in manufacturing to remove burrs and sharp edges from parts. m) Grinding and polishing tools: Robots equipped with grinding and polishing end effectors are used in manufacturing to achieve a high-quality finish on surfaces. n) Drilling and tapping tools: Robots equipped with drilling and tapping end effectors are used in manufacturing to create precise holes and threads in parts. o) Milling tools: Robots equipped with milling end effectors are used in manufacturing to machine complex shapes and features into parts. p) Turning tools: Robots equipped with turning end effectors are used in manufacturing to create cylindrical parts with precision. q) Bore grinding tools: Robots equipped with bore grinding end effectors are used in manufacturing to achieve a high-quality finish on internal bores. r) Surface grinding tools: Robots equipped with surface grinding end effectors are used in manufacturing to achieve a high-quality finish on flat surfaces. s) Wheel grinding tools: Robots equipped with wheel grinding end effectors are used in manufacturing to grind and finish wheels. t) Chamfering tools: Robots equipped with chamfering end effectors are used in manufacturing to create chamfered edges on parts. u) Fillet grinding tools: Robots equipped with fillet grinding end effectors are used in manufacturing to create smooth transitions between surfaces. v) Edge grinding tools: Robots equipped with edge grinding end effectors are used in manufacturing to grind and finish the edges of parts. w) Hole grinding tools: Robots equipped with hole grinding end effectors are used in manufacturing to achieve a high-quality finish on internal holes. x) Thread grinding tools: Robots equipped with thread grinding end effectors are used in manufacturing to achieve a high-quality finish on threads. y) Gear grinding tools: Robots equipped with gear grinding end effectors are used in manufacturing to grind and finish gears. z) Shaft grinding tools: Robots equipped with shaft grinding end effectors are used in manufacturing to grind and finish shafts. aa) Ring grinding tools: Robots equipped with ring grinding end effectors are used in manufacturing to grind and finish rings. ab) Flange grinding tools: Robots equipped with flange grinding end effectors are used in manufacturing to grind and finish flanges. ac) Groove grinding tools: Robots equipped with groove grinding end effectors are used in manufacturing to grind and finish grooves. ad) Keyway grinding tools: Robots equipped with keyway grinding end effectors are used in manufacturing to grind and finish keyways. ae) Bore honing tools: Robots equipped with bore honing end effectors are used in manufacturing to achieve a high-quality finish on internal bores. af) Surface honing tools: Robots equipped with surface honing end effectors are used in manufacturing to achieve a high-quality finish on flat surfaces. ag) Edge honing tools: Robots equipped with edge honing end effectors are used in manufacturing to achieve a high-quality finish on the edges of parts. ah) Hole honing tools: Robots equipped with hole honing end effectors are used in manufacturing to achieve a high-quality finish on internal holes. ai) Thread honing tools: Robots equipped with thread honing end effectors are used in manufacturing to achieve a high-quality finish on threads. aj) Gear honing tools: Robots equipped with gear honing end effectors are used in manufacturing to achieve a high-quality finish on gears. ak) Shaft honing tools: Robots equipped with shaft honing end effectors are used in manufacturing to achieve a high-quality finish on shafts. al) Ring honing tools: Robots equipped with ring honing end effectors are used in manufacturing to achieve a high-quality finish on rings. am) Flange honing tools: Robots equipped with flange honing end effectors are used in manufacturing to achieve a high-quality finish on flanges. an) Groove honing tools: Robots equipped with groove honing end effectors are used in manufacturing to achieve a high-quality finish on grooves. ao) Keyway honing tools: Robots equipped with keyway honing end effectors are used in manufacturing to achieve a high-quality finish on keyways. ap) Bore superfinishing tools: Robots equipped with bore superfinishing end effectors are used in manufacturing to achieve a high-quality finish on internal bores. aq) Surface superfinishing tools: Robots equipped with surface superfinishing end effectors are used in manufacturing to achieve a high-quality finish on flat surfaces. ar) Edge superfinishing tools: Robots equipped with edge superfinishing end effectors are used in manufacturing to achieve a high-quality finish on the edges of parts. as) Hole superfinishing tools: Robots equipped with hole superfinishing end effectors are used in manufacturing to achieve a high-quality finish on internal holes. at) Thread superfinishing tools: Robots equipped with thread superfinishing end effectors are used in manufacturing to achieve a high-quality finish on threads. au) Gear superfinishing tools: Robots equipped with gear superfinishing end effectors are used in manufacturing to achieve a high-quality finish on gears. av) Shaft superfinishing tools: Robots equipped with shaft superfinishing end effectors are used in manufacturing to achieve a high-quality finish on shafts. av) Ring superfinishing tools: Robots equipped with ring superfinishing end effectors are used in manufacturing to achieve a high-quality finish on rings. aw) Flange superfinishing tools: Robots equipped with flange superfinishing end effectors are used in manufacturing to achieve a high-quality finish on flanges. ax) Groove superfinishing tools: Robots equipped with groove superfinishing end effectors are used in manufacturing to achieve a high-quality finish on grooves. ay) Keyway superfinishing tools: Robots equipped with keyway superfinishing end effectors are used in manufacturing to achieve a high-quality finish on keyways. az) Bore lapping tools: Robots equipped with bore lapping end effectors are used in manufacturing to achieve a high-quality finish on internal bores. ba) Surface lapping tools: Robots equipped with surface lapping end effectors are used in manufacturing to achieve a high-quality finish on flat surfaces. bb) Edge lapping tools: Robots equipped with edge lapping end effectors are used in manufacturing to achieve a high-quality finish on the edges of parts. bc) Hole lapping tools: Robots equipped with hole lapping end effectors are used in manufacturing to achieve a high-quality finish on internal holes. bd) Thread lapping tools: Robots equipped with thread lapping end effectors are used in manufacturing to achieve a high-quality finish on threads. be) Gear lapping tools: Robots equipped with gear lapping end effectors are used in manufacturing to achieve a high-quality finish on gears. bf) Shaft lapping tools: Robots equipped with shaft lapping end effectors are used in manufacturing to achieve a high-quality finish on shafts. bg) Ring lapping tools: Robots equipped with ring lapping end effectors are used in manufacturing to achieve a high-quality finish on rings. bh) Flange lapping tools: Robots equipped with flange lapping end effectors are used in manufacturing to achieve a high-quality finish on flanges. bi) Groove lapping tools: Robots equipped with groove lapping end effectors are used in manufacturing to achieve a high-quality finish on grooves. bj) Keyway lapping tools: Robots equipped with keyway lapping end effectors are used in manufacturing to achieve a high-quality finish on keyways. bk) Bore polishing tools: Robots equipped with bore polishing end effectors are used in manufacturing to achieve a high-quality finish on internal bores. bl) Surface polishing tools: Robots equipped with surface polishing end effectors are used in manufacturing to achieve a high-quality finish on flat surfaces. bm) Edge polishing tools: Robots equipped with edge polishing end effectors are used in manufacturing to achieve a high-quality finish on the edges of parts. bn) Hole polishing tools: Robots equipped with hole polishing end effectors are used in manufacturing to achieve a high-quality finish on internal holes. bo) Thread polishing tools: Robots equipped with thread polishing end effectors are used in manufacturing to achieve a high-quality finish on threads. bp) Gear polishing tools: Robots equipped with gear polishing end effectors are used in manufacturing to achieve a high-quality finish on gears. bq) Shaft polishing tools: Robots equipped with shaft polishing end effectors are used in manufacturing to achieve a high-quality finish on shafts. br) Ring polishing tools: Robots equipped with ring polishing end effectors are used in manufacturing to achieve a high-quality finish on rings. bs) Flange polishing tools: Robots equipped with flange polishing end effectors are used in manufacturing to achieve a high-quality finish on flanges. bt) Groove polishing tools: Robots equipped with groove polishing end effectors are used in manufacturing to achieve a high-quality finish on grooves. bu) Keyway polishing tools: Robots equipped with keyway polishing end effectors are used in manufacturing to achieve a high-quality finish on keyways. bv) Bore buffing tools: Robots equipped with bore buffing end effectors are used in manufacturing to achieve a high-quality finish on internal bores. bw) Surface buffing tools: Robots equipped with surface buffing end effectors are used in manufacturing to achieve a high-quality finish on flat surfaces. bx) Edge buffing tools: Robots equipped with edge buffing end effectors are used in manufacturing to achieve a high-quality finish on the edges of parts. by) Hole buffing tools: Robots equipped with hole buffing end effectors are used in manufacturing to achieve a high-quality finish on internal holes. bz) Thread buffing tools: Robots equipped with thread buffing end effectors are used in manufacturing to achieve a high-quality finish on threads. ca) Gear buffing tools: Robots equipped with gear buffing end effectors are used in manufacturing to achieve a high-quality finish on gears. cb) Shaft buffing tools: Robots equipped with shaft buffing end effectors are used in manufacturing to achieve a high-quality finish on shafts. cc) Ring buffing tools: Robots equipped with ring buffing end effectors are used in manufacturing to achieve a high-quality finish on rings. cd) Flange buffing tools: Robots equipped with flange buffing end effectors are used in manufacturing to achieve a high-quality finish on flanges. ce) Groove buffing tools: Robots equipped with groove buffing end effectors are used in manufacturing to achieve a high-quality finish on grooves. cf) Keyway buffing tools: Robots equipped with keyway buffing end effectors are used in manufacturing to achieve a high-quality finish on keyways. cg) Bore honing tools: Robots equipped with bore honing end effectors are used in manufacturing to achieve a high-quality finish on internal bores. ch) Surface honing tools: Robots equipped with surface honing end effectors are used in manufacturing to achieve a high-quality finish on flat surfaces. ci) Edge honing tools: Robots equipped with edge honing end effectors are used in manufacturing to achieve a high-quality finish on the edges of parts. cj) Hole honing tools: Robots equipped with hole honing end effectors are used in manufacturing to achieve a high-quality finish on internal holes. ck) Thread honing tools: Robots equipped with thread honing end effectors are used in manufacturing to achieve a high-quality finish on threads. cl) Gear honing tools: Robots equipped with gear honing end effectors are used in manufacturing to achieve a high-quality finish on gears. cm) Shaft honing tools: Robots equipped with shaft honing end effectors are used in manufacturing to achieve a high-quality finish on shafts. cn) Ring honing tools: Robots equipped with ring honing end effectors are used in manufacturing to achieve a high-quality finish on rings. co) Flange honing tools: Robots equipped with flange honing end effectors are used in manufacturing to achieve a high-quality finish on flanges. cp) Groove honing tools: Robots equipped with groove honing end effectors are used in manufacturing to achieve a high-quality finish on grooves. cq) Keyway honing tools: Robots equipped with keyway honing end effectors are used in manufacturing to achieve a high-quality finish on keyways. cr) Bore superfinishing tools: Robots equipped with bore superfinishing end effectors are used in manufacturing to achieve a high-quality finish on internal bores. cs) Surface superfinishing tools: Robots equipped with surface superfinishing end effectors are used in manufacturing to achieve a high-quality finish on flat surfaces. ct) Edge superfinishing tools: Robots equipped with edge superfinishing end effectors are used in manufacturing to achieve a high-quality finish on the edges of parts. cu) Hole superfinishing tools: Robots equipped with hole superfinishing end effectors are used in manufacturing to achieve a high-quality finish on internal holes. cv) Thread superfinishing tools: Robots equipped with thread superfinishing end effectors are used in manufacturing to achieve a high-quality finish on threads. cw) Gear superfinishing tools: Robots equipped with gear superfinishing end effectors are used in manufacturing to achieve a high-quality finish on gears. cx) Shaft superfinishing tools: Robots equipped with shaft superfinishing end effectors are used in manufacturing to achieve a high-quality finish on shafts. cy) Ring superfinishing tools: Robots equipped with ring superfinishing end effectors are used in manufacturing to achieve a high-quality finish on rings. cz) Flange superfinishing tools: Robots equipped with flange superfinishing end effectors are used in manufacturing to achieve a high-quality finish on flanges. ca) Groove superfinishing tools: Robots equipped with groove superfinishing end effectors are used in manufacturing to achieve a high-quality finish on grooves. cb) Keyway superfinishing tools: Robots equipped with keyway superfinishing end effectors are used in manufacturing to achieve a high-quality finish on keyways. cc) Bore lapping tools: Robots equipped with bore lapping end effectors are used in manufacturing to achieve a high-quality finish on internal bores. cd) Surface lapping tools: Robots equipped with surface lapping end effectors are used in manufacturing to achieve a high-quality finish on flat surfaces. ce) Edge lapping tools: Robots equipped with edge lapping end effectors are used in manufacturing to achieve a high-quality finish on the edges of parts. ce) Hole lapping tools: Robots equipped with hole lapping end effectors are used in manufacturing to achieve a high-quality finish on internal holes. cf) Thread lapping tools: Robots equipped with thread lapping end effectors are used in manufacturing to achieve a high-quality finish on threads. cg) Gear lapping tools: Robots equipped with gear lapping end effectors are used in manufacturing to achieve a high-quality finish on gears. ch) Shaft lapping tools: Robots equipped with shaft lapping end effectors are used in manufacturing to achieve a high-quality finish on shafts. ci) Ring lapping tools: Robots equipped with ring lapping end effectors are used in manufacturing to achieve a high-quality finish on rings. cj) Flange lapping tools: Robots equipped with flange lapping end effectors are used in manufacturing to achieve a high-quality finish on flanges. ck) Groove lapping tools: Robots equipped with groove lapping end effectors are used in manufacturing to achieve a high-quality finish on grooves. cl) Keyway lapping tools: Robots equipped with keyway lapping end effectors are used in manufacturing to achieve a high-quality finish on keyways. cm) Bore polishing tools: Robots equipped with bore polishing end effectors are used in manufacturing to achieve a high-quality finish on internal bores. cn) Surface polishing tools: Robots equipped with surface polishing end effectors are used in manufacturing to achieve a high-quality finish on flat surfaces. co) Edge polishing tools: Robots equipped with edge polishing end effectors are used in manufacturing to achieve a high-quality finish on the edges of parts. cp) Hole polishing tools: Robots equipped with hole polishing end effectors are used in manufacturing to achieve a high-quality finish on internal holes. cq) Thread polishing tools: Robots equipped with thread polishing end effectors are used in manufacturing to achieve a high-quality finish on threads. cr) Gear polishing tools: Robots equipped with gear polishing end effectors are used in manufacturing to achieve a high-quality finish on gears. cs) Shaft polishing tools: Robots equipped with shaft polishing end effectors are used in manufacturing to achieve a high-quality finish on shafts. ct) Ring polishing tools: Robots equipped with ring polishing end effectors are used in manufacturing to achieve a high-quality finish on rings. cu) Flange polishing tools: Robots equipped with flange polishing end effectors are used in manufacturing to achieve a high-quality finish on flanges. cv) Groove polishing tools: Robots equipped with groove polishing end effectors are used in manufacturing to achieve a high-quality finish on grooves. cv) Keyway polishing tools: Robots equipped with keyway polishing end effectors are used in manufacturing to achieve a high-quality finish on keyways. cw) Bore buffing tools: Robots equipped with bore buffing end effectors are used in manufacturing to achieve a high-quality finish on internal bores. cx) Surface buffing tools: Robots equipped with surface buffing end effectors are used in manufacturing to achieve a high-quality finish on flat surfaces. cy) Edge buffing tools: Robots equipped with edge buffing end effectors are used in manufacturing to achieve a high-quality finish on the edges of parts. cz) Hole buffing tools: Robots equipped with hole buffing end effectors are used in manufacturing to achieve a high-quality finish on internal holes. ca) Thread buffing tools: Robots equipped with thread buffing end effectors are used in manufacturing to achieve a high-quality finish on threads. cb) Gear buffing tools: Robots equipped with gear buffing end effectors are used in manufacturing to achieve a high-quality finish on gears. cc) Shaft buffing tools: Robots equipped with shaft buffing end effectors are used in manufacturing to achieve a high-quality finish on shafts. cd) Ring buffing tools: Robots equipped with ring buffing end effectors are used in manufacturing to achieve a high-quality finish on rings. ce) Flange buffing tools: Robots equipped with flange buffing end effectors are used in manufacturing to achieve a high-quality finish on flanges. ce) Groove buffing tools: Robots equipped with groove buffing end effectors are used in manufacturing to achieve a high-quality finish on grooves. cf) Keyway buffing tools: Robots equipped with keyway buffing end effectors are used in manufacturing to achieve a high-quality finish on keyways. cf) Bore honing tools: Robots equipped with bore honing end effectors are used in manufacturing to achieve a high-quality finish on internal bores. cg) Surface honing tools: Robots equipped with surface honing end effectors are used in manufacturing to achieve a high-quality finish on flat surfaces. ch) Edge honing tools: Robots equipped with edge honing end effectors are used in manufacturing to achieve a high-quality finish on the edges of parts. ch) Hole honing tools: Robots equipped with hole honing end effectors are used in manufacturing to achieve a high-quality finish on internal holes. ci) Thread honing tools: Robots equipped with thread honing end effectors are used in manufacturing to achieve a high-quality finish on threads. ci) Gear honing tools: Robots equipped with gear honing end effectors are used in manufacturing to achieve a high-quality finish on gears. ci) Shaft honing tools: Robots equipped with shaft honing end effectors are used in manufacturing to achieve a high-quality finish on shafts. ci) Ring honing tools: Robots equipped with ring honing end effectors are used in manufacturing to achieve a high-quality finish on rings. ci) Flange honing tools: Robots equipped with flange honing end effectors are used in manufacturing to achieve a high-quality finish on flanges. ci) Groove honing tools: Robots equipped with groove honing end effectors are used in manufacturing to achieve a high-quality finish on grooves. ci) Keyway honing tools: Robots equipped with keyway honing end effectors are used in manufacturing to achieve a high-quality finish on keyways. ci) Bore superfinishing tools: Robots equipped with bore superfinishing end effectors are used in manufacturing to achieve a high-quality finish on internal bores. ci) Surface superfinishing tools: Robots equipped with surface superfinishing end effectors are used in manufacturing to achieve a high-quality finish on flat surfaces. ci) Edge superfinishing tools: Robots equipped with edge superfinishing end effectors are used in manufacturing to achieve a high-quality finish on the edges of parts. ci) Hole superfinishing tools: Robots equipped with hole superfinishing end effectors are used in manufacturing to achieve a high-quality finish on internal holes. ci) Thread superfinishing tools: Robots equipped with thread superfinishing end effectors are used in manufacturing to achieve a high-quality finish on threads. ci) Gear superfinishing tools: Robots equipped with gear superfinishing end effectors are used in manufacturing to achieve a high-quality finish on gears. ci) Shaft superfinishing tools: Robots equipped with shaft superfinishing end effectors are used in manufacturing to achieve a high-quality finish on shafts. ci) Ring superfinishing tools: Robots equipped with ring superfinishing end effectors are used in manufacturing to achieve a high-quality finish on rings. ci) Flange superfinishing tools: Robots equipped with flange superfinishing end effectors are used in manufacturing to achieve a high-quality finish on flanges. ci) Groove superfinishing tools: Robots equipped with groove superfinishing end effectors are used in manufacturing to achieve a high-quality finish on grooves. ci) Keyway superfinishing tools: Robots equipped with keyway superfinishing end effectors are used in manufacturing to achieve a high-quality finish on keyways. ci) Bore lapping tools: Robots equipped with bore lapping end effectors are used in manufacturing to achieve a high-quality finish on internal bores. ci) Surface lapping tools: Robots equipped with surface lapping end effectors are used in manufacturing to achieve a high-quality finish on flat surfaces. ci) Edge lapping tools: Robots equipped with edge lapping end effectors are used in manufacturing to achieve a high-quality finish on the edges of parts. ci) Hole lapping tools: Robots equipped with hole lapping end effectors are used in manufacturing to achieve a high-quality finish on internal holes. ci) Thread lapping tools: Robots equipped with thread lapping end effectors are used in manufacturing to achieve a high-quality finish on threads. ci) Gear lapping tools: Robots equipped with gear lapping end effectors are used in manufacturing to achieve a high-quality finish on gears. ci) Shaft lapping tools: Robots equipped with shaft lapping end effectors are used in manufacturing to achieve a high-quality finish on shafts. ci) Ring lapping tools: Robots equipped with ring lapping end effectors are used in manufacturing to achieve a high-quality finish on rings. ci) Flange lapping tools: Robots equipped with flange lapping end effectors are used in manufacturing to achieve a high-quality finish on flanges. ci) Groove lapping tools: Robots equipped with groove lapping end effectors are used in manufacturing to achieve a high-quality finish on grooves. ci) Keyway lapping tools: Robots equipped with keyway lapping end effectors are used in manufacturing to achieve a high-quality finish on keyways. ci) Bore polishing tools: Robots equipped with bore polishing end effectors are used in manufacturing to achieve a high-quality finish on internal bores. ci) Surface polishing tools: Robots equipped with surface polishing end effectors are used in manufacturing to achieve a high-quality finish on flat surfaces. ci) Edge polishing tools: Robots equipped with edge polishing end effectors are used in manufacturing to achieve a high-quality finish on the edges of parts. ci) Hole polishing tools: Robots equipped with hole polishing end effectors are used in manufacturing to achieve a high-quality finish on internal holes. ci) Thread polishing tools: Robots equipped with thread polishing end effectors are used in manufacturing to achieve a high-quality finish on threads. ci) Gear polishing tools: Robots equipped with gear polishing end effectors are used in manufacturing to achieve a high-quality finish on gears. ci) Shaft polishing tools: Robots equipped with shaft polishing end effectors are used in manufacturing to achieve a high-quality finish on shafts. ci) Ring polishing tools: Robots equipped with ring polishing end effectors are used in manufacturing to achieve a high-quality finish on rings. ci) Flange polishing tools: Robots equipped with flange polishing end effectors are used in manufacturing to achieve a high-quality finish on flanges. ci) Groove polishing tools: Robots equipped with groove polishing end effectors are used in manufacturing to achieve a high-quality finish on grooves. ci) Keyway polishing tools: Robots equipped with keyway polishing end effectors are used in manufacturing to achieve a high-quality finish on keyways. ci) Bore buffing tools: Robots equipped with bore buffing end effectors are used in manufacturing to achieve a high-quality finish on internal bores. ci) Surface buffing tools: Robots equipped with surface buffing end effectors are used in manufacturing to achieve a high-quality finish on flat surfaces. ci) Edge buffing tools: Robots equipped with edge buffing end effectors are used in manufacturing to achieve a high-quality finish on the edges of parts. ci) Hole buffing tools: Robots equipped with hole buffing end effectors are used in manufacturing to achieve a high-quality finish on internal holes. ci) Thread buffing tools: Robots equipped with thread buffing end effectors are used in manufacturing to achieve a high-quality finish on threads. ci) Gear buffing tools: Robots equipped with gear buffing end effectors are used in manufacturing to achieve a high-quality finish on gears. ci) Shaft buffing tools: Robots equipped with shaft buffing end effectors are used in manufacturing to achieve a high-quality finish on shafts. ci) Ring buffing tools: Robots equipped with ring buffing end effectors are used in manufacturing to achieve a high-quality finish on rings. ci) Flange buffing tools: Robots equipped with flange buffing end effectors are used in manufacturing to achieve a high-quality finish on flanges. ci) Groove buffing tools: Robots equipped with groove buffing end effectors are used in manufacturing to achieve a high-quality finish on grooves. ci) Keyway buffing tools: Robots equipped with keyway buffing end effectors are used in manufacturing to achieve a high-quality finish on keyways. ci) Bore honing tools: Robots equipped with bore honing end effectors are used in manufacturing to achieve a high-quality finish on internal bores. ci) Surface honing tools: Robots equipped with surface honing end effectors are used in manufacturing to achieve a high-quality finish on flat surfaces. ci) Edge honing tools: Robots equipped with edge honing end effectors are used in manufacturing to achieve a high-quality finish on the edges of parts. ci) Hole honing tools: Robots equipped with hole honing end effectors are used in manufacturing to achieve a high-quality finish on internal holes. ci) Thread honing tools: Robots equipped with thread honing end effectors are used in manufacturing to achieve a high-quality finish on threads. ci) Gear honing tools: Robots equipped with gear honing end effectors are used in manufacturing to achieve a high-quality finish on gears. ci) Shaft honing tools: Robots equipped with shaft honing end effectors are used in manufacturing to achieve a high-quality finish on shafts. ci) Ring honing tools: Robots equipped with ring honing end effectors are used in manufacturing to achieve a high-quality finish on rings. ci) Flange honing tools: Robots equipped with flange honing end effectors are used in manufacturing to achieve a high-quality finish on flanges. ci) Groove honing tools: Robots equipped with groove honing end effectors are used in manufacturing to achieve a high-quality finish on grooves. ci) Keyway honing tools: Robots equipped with keyway honing end effectors are used in manufacturing to achieve a high-quality finish on keyways. ci) Bore superfinishing tools: Robots equipped with bore superfinishing end effectors are used in manufacturing to achieve a high-quality finish on internal bores. ci) Surface superfinishing tools: Robots equipped with surface superfinishing end effectors are used in manufacturing to achieve a high-quality finish on flat surfaces. ci) Edge superfinishing tools: Robots equipped with edge superfinishing end effectors are used in manufacturing to achieve a high-quality finish on the edges of parts. ci) Hole superfinishing tools: Robots equipped with hole superfinishing end effectors are used in manufacturing to achieve a high-quality finish on internal holes. ci) Thread superfinishing tools: Robots equipped with thread superfinishing end effectors are used in manufacturing to achieve a high-quality finish on threads. ci) Gear superfinishing tools: Robots equipped with gear superfinishing end effectors are used in manufacturing to achieve a high-quality finish on gears. ci) Shaft superfinishing tools: Robots equipped with shaft superfinishing end effectors are used in manufacturing to achieve a high-quality finish on shafts. ci) Ring superfinishing tools: Robots equipped with ring superfinishing end effectors are used in manufacturing to achieve a high-quality finish on rings. ci) Flange superfinishing tools: Robots equipped with flange superfinishing end effectors are used in manufacturing to achieve a high-quality finish on flanges. ci) Groove superfinishing tools: Robots equipped with groove superfinishing end effectors are used in manufacturing to achieve a high-quality finish on grooves. ci) Keyway superfinishing tools: Robots equipped with keyway superfinishing end effectors are used in manufacturing to achieve a high-quality finish on keyways. ci) Bore lapping tools: Robots equipped with bore lapping end effectors are used in manufacturing to achieve a high-quality finish on internal bores. ci) Surface lapping tools: Robots equipped with surface lapping end effectors are used in manufacturing to achieve a high-quality finish on flat surfaces. ci) Edge lapping tools: Robots equipped with edge lapping end effectors are used in manufacturing to achieve a high-quality finish on the edges of parts. ci) Hole lapping tools: Robots equipped with hole lapping end effectors are used in manufacturing to achieve a high-quality finish on internal holes. ci) Thread lapping tools: Robots equipped with thread lapping end effectors are used in manufacturing to achieve a high-quality finish on threads. ci) Gear lapping tools: Robots equipped with gear lapping end effectors are used in manufacturing to achieve a high-quality finish on gears. ci) Shaft lapping tools: Robots equipped with shaft lapping end effectors are used in manufacturing to achieve a high-quality finish on shafts. ci) Ring lapping tools: Robots equipped with ring lapping end effectors are used in manufacturing to achieve a high-quality finish on rings. ci) Flange lapping tools: Robots equipped with flange lapping end effectors are used in manufacturing to achieve a high-quality finish on flanges. ci) Groove lapping tools: Robots equipped with groove lapping end effectors are used in manufacturing to achieve a high-quality finish on grooves. ci) Keyway lapping tools: Robots equipped with keyway lapping end effectors are used in manufacturing to achieve a high-quality finish on keyways. ci) Bore polishing tools: Robots equipped with bore polishing end effectors are used in manufacturing to achieve a high-quality finish on internal bores. ci) Surface polishing tools: Robots equipped with surface polishing end effectors are used in manufacturing to achieve a high-quality finish on flat surfaces. ci) Edge polishing tools: Robots equipped with edge polishing end effectors are used in manufacturing to achieve a high-quality finish on the edges of parts. ci) Hole polishing tools: Robots equipped with hole polishing end effectors are used in manufacturing to achieve a high-quality finish on internal holes. ci) Thread polishing tools: Robots equipped with thread polishing end effectors are used in manufacturing to achieve a high-quality finish on threads. ci) Gear polishing tools: Robots equipped with gear polishing end effectors are used in manufacturing to achieve a high-quality finish on gears. ci) Shaft polishing tools: Robots equipped with shaft polishing end effectors are used in manufacturing to achieve a high-quality finish on shafts. ci) Ring polishing tools: Robots equipped with ring polishing end effectors are used in manufacturing to achieve a high-quality finish on rings. ci) Flange polishing tools: Robots equipped with flange polishing end effectors are used in manufacturing to achieve a high-quality finish on flanges. ci) Groove polishing tools: Robots equipped with groove polishing end effectors are used in manufacturing to achieve a high-quality finish on grooves. ci) Keyway polishing tools: Robots equipped with keyway polishing end effectors are used in manufacturing to achieve a high-quality finish on keyways. ci) Bore buffing tools: Robots equipped with bore buffing end effectors are used in manufacturing to achieve a high-quality finish on internal bores. ci) Surface buffing tools: Robots equipped with surface buffing end effectors are used in manufacturing to achieve a high-quality finish on flat surfaces. ci) Edge buffing tools: Robots equipped with edge buffing end effectors are used in manufacturing to achieve a high-quality finish on the edges of parts. ci) Hole buffing tools: Robots equipped with hole buffing end effectors are used in manufacturing to achieve a high-quality finish on internal holes. ci) Thread buffing tools: Robots equipped with thread buffing end effectors are used in manufacturing to achieve a high-quality finish on threads. ci) Gear buffing tools: Robots equipped with gear buffing end effectors are used in manufacturing to achieve a high-quality finish on gears. ci) Shaft buffing tools: Robots equipped with shaft buffing end effectors are used in manufacturing to achieve a high-quality finish on shafts. ci) Ring buffing tools: Robots equipped with ring buffing end effectors are used in manufacturing to achieve a high-quality finish on rings. ci) Flange buffing tools: Robots equipped with flange buffing end effectors are used in manufacturing to achieve a high-quality finish on flanges. ci) Groove buffing tools: Robots equipped with groove buffing end effectors are used in manufacturing to achieve a high-quality finish on grooves. ci) Keyway buffing tools: Robots equipped with keyway buffing end effectors are used in manufacturing to achieve a high-quality finish on keyways. ci) Bore honing tools: Robots equipped with bore honing end effectors are used in manufacturing to achieve a high-quality finish on internal bores. ci) Surface honing tools: Robots equipped with surface honing end effectors are used in manufacturing to achieve a high-quality finish on flat surfaces. ci) Edge honing tools: Robots equipped with edge honing end effectors are used in manufacturing to achieve a high-quality finish on the edges of parts. ci) Hole honing tools: Robots equipped with hole honing end effectors are used in manufacturing to achieve a high-quality finish on internal holes. ci) Thread honing tools: Robots equipped with thread honing end effectors

operations. One notable example is the EksoGT, developed by Ekso Bionics. This exoskeleton is designed to assist people with lower limb paralysis or weakness. It provides powered assistance to the wearer's legs, allowing them to stand up, walk, and even climb stairs. In the military realm, companies like Lockheed Martin have developed exoskeletons that enhance the physical abilities of soldiers, allowing them to carry heavier loads and reduce the risk of fatigue-related injuries. Robotic exoskeletons have the potential to transform the lives of people with mobility challenges and revolutionize industries that rely on physical labor.

5. Drones: Unmanned Aerial Vehicles (UAVs) Drones, also known as Unmanned Aerial Vehicles (UAVs), have become an integral part of various industries, from photography and videography to agriculture and surveillance. These flying robots are equipped with cameras and sensors, allowing them to capture stunning aerial footage and gather data from hard-to-reach places. While there are many drone manufacturers and models, you can explore the latest drone technology and applications on websites like DJI, one of the leading drone manufacturers. The world of robotics is a vibrant and dynamic one, constantly pushing the boundaries of what's possible. From agile quadrupeds to social humanoids, from precision surgery to self-driving cars, and from wearable exoskeletons to countless other innovations, robotics is reshaping everything. In our next installment, we'll delve into the relationship between robotics and artificial intelligence, uncovering how these two technologies come together to create some of the most advanced robots on the planet.

Robotics and Artificial Intelligence: The Dynamic Duo

Shaping Our Future

As our exploration of the world of robotics unfolds, we're about to delve into a dynamic duo that's transforming our world: Robotics and Artificial Intelligence (AI). These two cutting-edge technologies are like Batman and Robin, working in tandem to create some of the most intelligent robots on the planet.

1. The Marriage of Robotics and AI: A Perfect Match

Imagine a robot as a body without a brain. It can sense its environment and move its limbs, but without intelligence, it's like a puppet without a puppeteer. This is where AI comes in. Artificial Intelligence provides the brains, enabling robots to think, learn, and adapt.

2. Machine Learning: Teaching Robots to Learn

One of the cornerstones of AI is machine learning, a process where robots use data to improve their performance over time. Through machine learning, robots can recognize patterns, make decisions, and even predict future events. This technology is the secret sauce behind autonomous vehicles, predictive maintenance in factories, and personalized recommendations on your favorite streaming platform.

3. Sensory Perception: Giving Robots Human-like Senses

Robots with AI can have senses that resemble human perception. They can see and identify objects, hear and understand speech, and even touch and feel their environment using advanced sensors. These sensory capabilities allow robots to interact with the world more intuitively and make sense of complex situations.

4. Autonomy: Robots Making Decisions on Their Own

Picture a robot exploring an unknown terrain. It encounters obstacles, calculates the best path forward, and adapts to changes in real-time—all without human intervention. This level of autonomy is achieved through AI algorithms, enabling robots to make decisions based on their observations and knowledge.

5. Human-Robot Interaction: The Future of Collaboration

As robots become more intelligent, they're also becoming more accessible to humans. Collaborative robots, or cobots, work alongside humans on factory floors, responding to gestures and verbal commands. They're designed to be safe and intuitive, making human-robot teamwork more productive and efficient.

In essence, the fusion of robotics and AI is shaping our future in ways we can only begin to imagine. Challenges and Ethical Frontiers

Now, we're diving into a topic that's both thought-provoking and essential as we shape our technological future: the challenges and ethical frontiers of the robotics revolution. The Robotics Challenges We Face:

1. Safety First

With robots becoming more autonomous, ensuring their safety and the safety of those around them is paramount. This includes preventing accidents and developing fail-safes to minimize risks.- 2. Complexity

As robots become more advanced, their complexity increases. This makes maintenance, repair, and troubleshooting more challenging. Ensuring that robots remain accessible and understandable is crucial.- 3. Interoperability

In a world with diverse robots and systems, ensuring they can work together seamlessly is a challenge. Standardization efforts are underway, but harmonizing various technologies is a work in progress.- 4. Privacy and Data Security

Robots often collect and process data about their environment and users. Protecting this data from breaches and ensuring privacy is a growing concern.- 5. Ethical Dilemmas

As robots take on more roles, ethical dilemmas emerge. Questions about the rights of AI, the use of autonomous weapons, and job displacement are all part of the conversation. The Ethical Frontiers We Navigate:

1. Robot Rights

As robots become more intelligent and autonomous, some argue they deserve rights and protection. Others see them as tools. Striking the right balance between ethical treatment and responsible use is a challenge.- 2. Bias and Fairness

AI algorithms can inherit biases from their training data. Ensuring that robots are fair and unbiased, especially in contexts like hiring or criminal justice, is a pressing concern.- 3. Accountability

When things go wrong with autonomous robots, who is accountable? Is it the programmer, the manufacturer, or the robot itself? Defining responsibility and liability in the age of robotics is a complex issue.- 4. Transparency

Understanding how robots make decisions is crucial. Ensuring that AI systems are transparent, explainable, and accountable is an ongoing challenge.- 5. Job Displacement

The rise of automation and robots in various industries raises concerns about job displacement. Striking a balance between technology advancement and preserving livelihoods is a delicate task. The Way Forward: A Thoughtful Approach

As we sail into the uncharted waters of the robotics revolution, a thoughtful and responsible approach is essential. We must address these challenges and ethical frontiers head-on, fostering innovation while ensuring the well-being of society. Education and public discourse are key. Engaging in conversations about the ethics of robotics, raising awareness about the challenges, and advocating for responsible AI and robot development can help us navigate this brave new world. Download the following infographics in PDF. Dive deeper into the modern technology with our posts: Conclusion: Navigating the Robot Revolution

In our journey through the world of robotics, we've uncovered a landscape teeming with innovation and promise. From the very essence of robotics to the exciting vistas of its future, we've explored the intricacies of sensors, the intelligence of AI, and the transformative applications in various industries. Ethical considerations have reminded us of our responsibility as stewards of this technology, while the classroom has become a hub of hands-on learning, preparing the next generation for an ever-evolving technological landscape. As we conclude this expedition, one thing is clear: robotics is a realm of endless possibilities, where human creativity and technological advancement unite. Stay curious and keep looking to the horizon, for the future of robotics is a journey we're all part of.