



File Name: Camray quartet boiler manual.pdf

Size: 4414 KB

Type: PDF, ePub, eBook

Category: Book

Uploaded: 3 May 2019, 14:54 PM

Rating: 4.6/5 from 709 votes.

Download Now!

Please check the box below to proceed.



I'm not a robot



reCAPTCHA
Privacy - Terms

Book Descriptions:

Camray quartet boiler manual

Installation & maintenance manual for Camray 5 Combi External Boilers

Page 1 of 57

Installation & maintenance manual for

Camray 5 Combi External Boilers



By Appointment to
H.M. Queen Elizabeth II
Boulter Boilers Limited
Boiler Manufacturers

Heat is our Element



Health & Safety

INFORMATION FOR THE INSTALLER AND SERVICE ENGINEER.

Under the Consumer Protection Act 1987 and the Health and Safety at Work Act 1974, it is a requirement to provide information on substances hazardous to health (COSHH Regulations 1988).

The Company takes every reasonable care to ensure that these products are designed and constructed to meet these general safety requirements, when properly used and installed.

To fulfil this requirement products are comprehensively tested and examined before dispatch.

This appliance may contain some of the materials below.

When working on the appliance it is the Users/Engineers responsibility to ensure that any necessary personal protective clothing or equipment is worn appropriate to parts that could be considered as being hazardous to health and safety.

INSULATION & SEALS

file:///D:/PL61500/PL61500.htm

14/04/2005

Under the Consumer Protection Act 1987 and the Health and Safety at Work Act 1974, it is a requirement to provide information on substances hazardous to health COSHH Regulations 1988. The Company takes every reasonable care to ensure that these products are designed and constructed to meet these general safety requirements, when properly used and installed. BOULTER BOILERS Boulter Boilers Limited Magnet House, White House Road, Ipswich IP1 5JA. Before using your new Boiler, we ask that you carefully read the following information. It is the responsibility of the installer to ensure that the Boiler is commissioned. If an engineer is not known, Boulter Buderus will be pleased to provide details of commissioning and servicing engineers from their register. Your Installer should give guidance on this. This is perfectly normal and should be no cause for concern. Note The nozzle on this appliance is only covered by a 1 year guarantee. The isolating switch must have all pole contact separations at least 3mm BOULTER BUDERUS CAMRAY 5 PAGE 7 35 DIMENSIONS Output. The chimney should comply with the latest edition of the Building Regulations and BS 5410 Part 1. A high level outlet should be provided for ventilation. BOULTER BUDERUS CAMRAY 5 PAGE 11 47 OIL STORAGE 47.1 Oil Tank Consideration to the access by fuel delivery lorries should be given when positioning the oil tank. As there is only one tapped outlet they are more suited to single pipe feed as gravity supply or with a Boulter 3K Oil Loop Deaerator where suction lift is required. The Flexible Oil Pipes are fitted inside the Boiler casing and are of adequate length to enable the Burner to be removed without disconnecting. Click the Programmer in place from the front. 6. Fitting Instructions for the programmer are included in the Programmer Kit. These may be as required but can be easily changed if not. Test enables a quick review of the 7 day programme. <http://gizmakina.com/depo/sayfaresim/dirt-devil-purpose-for-pets-user-manual.xml>

- **camray quartet boiler manual, boulder camray quartet boiler manual, boulder camray quartet oil boiler manual, 1.0, camray quartet boiler manual, boulder camray quartet boiler manual, boulder camray quartet oil boiler manual.**



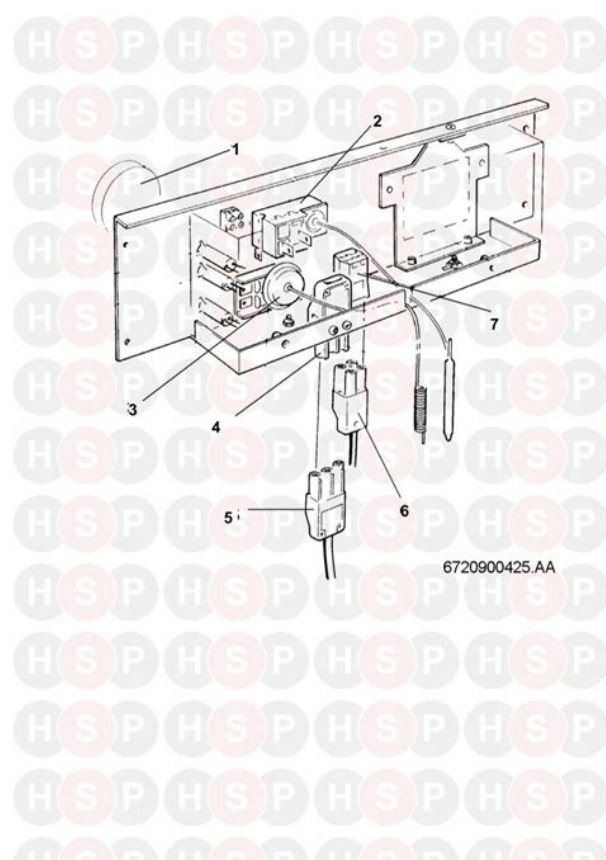
This enables a period of days to be set up to 99 during which time the Heating System is OFF. When the Holiday Period is over the Programmer reverts back to the normal programme. Balanced Flues permit considerable choice of siting of the Boiler. Boilers may be installed in situations where no chimney exists, where the chimney is unsatisfactory or in outhouses. Due to the efficiency levels of Camray 5 plumbing from the terminals may occur under certain conditions. The illustration shows a typical rear outlet flue. Assemble the flue generally as follows 1. Available from Boulter Buderus. 17. Inside Using the clips supplied fix the flexible air duct to the burner spigot and flue offtake securely. The following illustrations show boilers up against a rear wall as an example. It is not essential for the boiler to be positioned this way; As long as the joists are capable of supporting the flue via the support plate supplied in the kit. Continue with the rest of the installation. The following illustrations show boilers up against a rear wall as an example. It is not essential for the boiler to be positioned this way. As long as the joists are capable of supporting the flue via the support plate supplied in the Kit or the Flue support quadrant kit optional. Continue with the rest of the installation. This is attained by pushing two telescopic flues together until the desired dimension is obtained. Secure any vertical lengths by using a drill and 4 self tapping screws supplied. If an engineer is not known Boulter Boilers will be pleased to provide details of commissioning and servicing engineers from their register. Outer valve Filter Sludge cock Non plastic tanks. HEIGHT OF TANK Is the bottom of the tank above the oil pump if a single pipe system is installed. OIL SUPPLY LINE Ensure that galvanised iron has not been used. <http://www.cirurgicabrazil.com.br/userfiles/dirt-devil-purpose-pets-manual.xml>



BOULTER BUDERUS CAMRAY 5 PAGE 41 74 BOULTER BUDERUS RECOMMENDED COMMISSIONING CHECK LIST SHEET 2 OF 2 CASING PANELS Have grommets been fitted to relevant oil supply entry points knockouts Is the flue free of any obstruction. Has the chimney been adequately lined and insulated. NOTE Lining the flue and back filling will help prevent condensate problems BALANCED FLUE APPLIANCES Is the correct flue kit fitted. Is the Flue off take correctly secured to the boiler by four nuts and washers. GENERAL Has the boiler been installed in accordance with manufacturers instructions. BOULTER BUDERUS CAMRAY 5 PAGE 42 75 BOULTER BUDERUS RECOMMENDED COMMISSIONING TESTS Have the manufacturers onsite assembly instructions been followed Instruct the user on the operation of the appliance and leave this manual with the customer. CHANGE the nozzle for one with the specified make, oil rate, spray pattern and angle. Inspect the ignition electrodes for crazing in the porcelain. Replace if there are signs of deterioration. A dirty fan impeller can impair the performance of a burner, inspect and clean if necessary. To adjust the CO at the Air Shutter use a 3mm allen key as shown. BOULTER BUDERUS CAMRAY 5 PAGE 45 101 FAULT FINDING If the Boiler fails to start, make the following checks before calling a service engineer 1. BOULTER BUDERUS CAMRAY 5 PAGE 53 Burner starts but will not This can be due either to light up absence of oil of ignition. BOULTER BUDERUS CAMRAY 5 PAGE 54 Burner pulsates Worn nozzle with Replace with nozzle of correct type and size see a continuously excess throughout or Technical Data. Due to a policy of continual development Buderus reserves the right to alter or amend the design of its products without prior notice. Buderus Camray 3 oil boiler. Camray 2 Oil Boiler Manual Greenstar camray kitchen floor standing oil fired. Afternoon guys, Does anyone have the manual available for a Buderus Camray 3 oil boiler at all. Have tried a few links and I am getting nowhere.

Buderus Domestic Condensing Boilers Buderus domestic boilers were phased out in the UK in 2009, but all products continue to be fully supported by Bosch Thermotechnology Ltd. The domestic range includes combi, regular and system boilers from the 500, 600 and 800 series. Oil Boiler Uk After ten

seconds a relay clicks and then the lockout indicator cone on, as does a light on the reset button. Eg, heating coming on or going off Boiler will not fire up 6 Anything else you feel may be of relevance Possible contamination of oil supply by sediment from oil tank as it one ran low.have not checked filter for muck or blockage. Sounds like the ignition isnt firing, the click is probably the oil solenoid opening allowing oil to the jet but then if you allowed the filter to be clogged by crap from the bottom of the tank then it may well be the oil not getting to the jet and the ignition is firing but no oil to light. You can on some burners hear the buzz of the electrodes sparking as the click happens. I would say that most faults with oil boilers are caused by lack of maintenance i.e soot build up on the burner head or crap in the oil supply. Hearthstone H3 Oil Boiler I do a lot of oil burners living in the wilds of Scotland but Oilman seems to know most of the boilers well, give him a shout for particular details. Clean or replace the filter first but leave the burner to a professional. Click to expand.To start with I suggest possible contamination of oil supply by sediment from oil tank. Have you checked filter for muck or blockage.

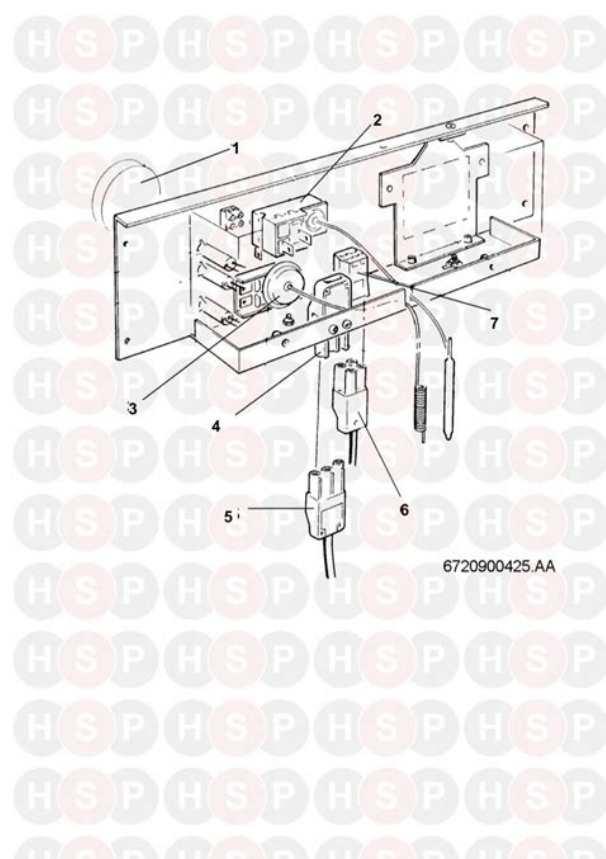


<http://superbia.lgbt/flotaganis/1647909629>

Next it might be failed oil pump, failed control box, failed EHT transformer both of these are unlikely if it is a Riello burner, since the transformer is built into the control box, and I have come across only one faulty one, incorrect electrode setting, or cracked electrodes causing tracking and so no spark, incorrect air setting, blocked nozzle, failed photocell again not often, but if the burner has run sooty, it may not be able to sense the flame. When did you last have it serviced Assuming it was done properly of course. Would you like to try it too Please try again later. For a better experience, please enable JavaScript in your browser before proceeding. It may not display this or other websites correctly. You should upgrade or use an alternative browser. As I see them front and back, Ive bought second hand boiler and need to know how to install it, in the past Iv only ever had to deal with one feed. Help required please, is one a fee and one a return Jame As I see them front and back, Ive bought a second hand boiler and need to know how to install it, in the past Ive only ever had to

deal with one feed. Help required please, is one a feed and one a return There are two pipes because as you rightly say one is a flow suction and one is a return. Both options will be shown in the manual. If the bottom of the tank is above the oil pump to guarantee a flooded suction then you can alter the pump to bypass internally usually by removing a screwed plug and use only one oil pipe. Dont forget to use a currently type approved oil firestop valve such as a Teddington KBB and of course you will be bringing ALL the peripherals up to current standard AND having it checked by Building Control wont you After that, you can post your question and our members will help you out. Amateurs and Experts are both welcome. Create one here. Has newish motor, pump, controller. Creators are allowed to post content they produce to the platform, so long as they comply with our policies.

<https://www.ecopol.com/images/britannia-cooker-hood-manual.pdf>



United Kingdom. Company number 10637289. Cant find the part youre looking for. You can contact us and a member of our team will be more than happy to help find the part you need. All of our boiler manuals are free to download from our boiler manuals section The combi boiler allows water to be heated in both the central heating radiators and domestic water heating systems taps, showers, etc within a household. The heat only and the central heating boilers only work for one system or the other and tend to be used in tandem with hot water cylinders to heat both systems within a household. Oil Boilers are traditionally larger than gas boilers due to the size of the burner. Mechanically, oil boilers are very similar to traditional boilers with the exception of the fuel source used to produce heat. Oil boilers and spares are produced by a range of manufacturers. These include HRM, Worcester, Potterton, Grant, Warmflow and Trianco. Our distribution warehouse holds over twenty thousand different boiler spares in stock and we have a dedicated purchasing team that ensures our stock levels are maintained to cut down on lead times from ordering direct to any location in the uk. We offer various delivery options and can even provide a next day, pre 12 delivery to most parts of the UK. Our UK based offices contain collectively over 200 years of boiler spares and spares distribution experience. Please feel free to contact us either by email or phone on the

details provided at the bottom of the page. Please refer to our privacy policy for more info. We will source it from our suppliers and aim to get it to you within 3 5 working days. It may not display this or other websites correctly. You should upgrade or use an alternative browser. Turned out to be the motor found replacement and fitted. Started boiler, fan run, ignition no main burner, then to lock out.

<http://edu2me.com/images/britadeira-manual.pdf>



Reset a couple of times still no main burner and fan would not start Stripped off pump tried reset and fan starts every time, so stripped pump down, was clean didnt look worn so replaced on motor, then tried fan and would not kick in, pump seems to be stopping it, now believe this is what took out original motor. Cured this by nipping plate on rather than tightening down, several resets later burner still not firing Removed injector feed pipe from pump run it and no fuel coming, then tried solenoid found this to be getting power though appears not to be working. With solenoid still off gave fan a quick run and fuel came into the chamber So oil chaps and fonts of knowledge does anyone know the part number, I assume, as I dont know, the pump and solenoid come as one part. Its a Riello G7Q burner made for Boulter. Or has anyone got a manual for a Boulter Camray Quartet If you ring Riello you can get a CD full of burner information, otherwise Worcester might supply a Quartet manual.If you ring Riello you can get a CD full of burner information, otherwise Worcester might supply a Quartet manual. Click to expand. Does the pump and solenoid come as one or is there a part number for solenoid. Thanks for info I dont normally change with pump!! Coil is two stage ! Lifting coil and holding coil !!I dont normally change with pump!! Click to expand. Will source new pump and sol tomorrow.This is a very small movement aint it.Did you measure the motor capacitor. Solenoid works the other way round it closes to send full pressure to the nozzleClick to

expand. So dodgy pump took out first motor Stripped pump, seemed fine seemed to pump when on motor without solenoid valve attached. I measure these every couple of years as it saves unnecessary callouts. Will update post when have it working tomorrow, he types wishfully Needs to be working before I jet off to Canada for Halloween. Cheers oilman, and Terry I measure these every couple of years as it saves unnecessary callouts.

Click to expand. So I now think the cap being low would,nt kick in the motor, this in turn burnt out the motor Now what took out the pump Anyway its running now, intend to fit correct cap on return from Canada. PS, would you have the part number for capacitor,,,,,,,,I Know Iam a cheeky sod. You should upgrade or use an alternative browser. The issue is with the fan, it appears to be binding and stopping the heating from starting, if I free it up then I can sometimes get the heating kicking in for a while before it locks out again. What I cant seem to work out is how to actually remove the fan blade bit from the motor spindle. I have noted that there is a grub screw which I have removed but I still cant seem to pull the fan free and dont want to force it without checking first. Basically I want to see what is behind it since I suspect that some sort of bearing has failed. Anyone any hints on removing the blade part. Any hints on part numbers and where is best to order new parts from would also be appreciated. The fan will not be sticking, but either the motor is not being started by the capacitor or the oil pump on the burner is causing the jam. A riello capacitor is easy to fit, an oil pump is not a diy job Remove oil pump and find a flat bladed tool that will fit into slots on motor shaft. The fan can then be twisted and tapped On the hub to loosen it. Or you can buy a puller for 40 odd quid. 2 bearings are about a tenner. Without the impellor on the motor starts fine it seems, with it on it seems to stick moved fractionally, more like a judder stops and then the unit will lock out a little later. I originally did try replacing the capacitor with a spare I keep but that did not help and so to eliminate changes I have added back in the old one. I should mention that the old impellor is a bit corroded, but then again it does date from 1998 so that is probably not a surprise.

drmarlenebothma.co.za/wp-content/plugins/formcraft/file-upload/server/content/files/1626fd226bb1f4---bose-portable-ipod-dock-manual.pdf

It is also probably relevant that before the unit failed it was making some noises for a while, one was a whine and then there was a noise a bit like something was scraping against something else, hence my feeling it is the fan impeller or the motor and I am now tending away from the motor. Anyone any idea on part numbers for the impeller, I know that the motor is a 171T but I could not see a parts stamp on the impellor. Have you also checked that the oil pump has no tight spots or leaking shaft seal Unless there is some relationship between the oil pump and the fan turning that I am not aware of then the issues do seem to be on the impellor side of the assembly. Bearings however would I guess match the whine noise but without the impellor in place I cant run the motor to see if that noise is totally away and it was not always present anyway. Im obviously wanting to try everything other than the oil pump given the comments about that not being a DIY job and yet no local company being willing to do a repair any more. If its stiff to turn by hand then either there is a tight bearing, but if one bearing is actually really goosed then the rotor inside the motor may be contacting the field windings. they have to revolve in very close proximity. I think the bearings will be 6202ZZ ones. Its usually the capacitor that gives up first, but not always! John Without the impellor I have not yet seen the motor stick but with and without the cover I have seen the motor stick when the impellor is fitted I am aware that this type of testing is probably not advised but I can see the motor turn and switch off the power before the burner kicks up when the cover is not fitted. I dont think youll have any problems replacing it, but the do have to be set up with a pressure gauge and a flue gas analyser when the job is done. With the pump on the bench it should revolve smoothly without any sticky places. You can turn pump spindles with your fingers, but you cant actually spin them.

www.e-mogilev.com/uploads/files/bread-box-toastmaster-bread-maker-manual-tbr2.pdf

John Certainly the parts diagram seems to match the bits of the boiler that are visible. The only real difference is that I don't have the metal cover, but thinking about that I may have seen something like it in the barn, must go and have a look at some stage. If you look at www.heatingparts.co.uk their replacement part number is 262242. Is the fan damaged in any way, unless it's been put out of balance by mishandling, they are fairly robust. Are you doing your investigations through the air door, or have you got that cover off? John Tonight I replaced the old one while waiting for a new one to arrive the part number actually ends in 88 not 08. After hitting the fan a bit to make sure it is true I bent it a little trying to remove it the heating is firing up fine but is a bit noisy. Been on for around 40 minutes now, went out once but that was down to the temperature being reached, it kicked back in again itself now. However chances are it will lock out next time or work until the hour is up boost mode and then lockout next time I try and start it up. BUT at least I will get the radiators warm for a bit which helps. The boiler is room sealed by virtue of the case seals. A tight oil pump will stall the motor because it sits into a recess in the back of the motor shaft. If you have bent the fan then it will be advisable to replace it as if it is out of balance, then it will be noisy, probably catch the casing and put a strain on the bearings of the motor. If you take the pump out of the back of the motor, you will probably find that fuel has been leaking out of the shaft seal, into the back bearing of the motor. This will have become worn, because it should be a dry bearing. If replacing all the parts is time consuming and expensive, then a complete replacement burner could be fitted, but that will need to be commissioned by a competent person with the equipment to do the job.

You have already been told where the problem probably is by several people on this forum, but have chosen to ignore them. It is like blaming the wheels on your car for not turning when you have run out of fuel. Boiler Buying Guide 2020 Boiler Efficiency Ratings Which is the Best Combi Boiler in 2020. What is the SEDBUK Rating. What is a Condensing Boiler. What is a Regular Boiler. What is a System Boiler. What are Biomass Fuels. We recommend that you upgrade to a new, more efficient boiler to help reduce fuel bills and carbon dioxide emissions. Get a repair quote Upgrade to a New, More Efficient Boiler Get boiler quotes today Visit Boiler Guide to get free no obligation quotes from trustworthy heating engineers in your area. Some models may be obsolete. You should upgrade or use an alternative browser. It has been regularly serviced and all readings are well within spec. Have checked oil flow from tank and checked filter for blockage and water content all apparently OK. Mystified More info please Martin If we press the reset button it ignites immediately. In the last couple of days with the current cold weather it has stopped operating after 60 mins or so even when we have reset it. Once the external temperature is above 3 deg it works perfectly. It could be that the burner is overaired which causes flame detachment, hence lock out. For the cost of it, it's probably worth changing the solenoid coil and photocell which can both be very temperamental on riello burners. Martin Thanks for advice on solenoid and cell. Will let you know if it works. Merry Christmas. I've had several winter morning lockouts on boilers that have been set up in the warmer months when the air is less dense. Outside boilers are far more inclined to suffer than internal ones. Problem now solved, thanks for all help. Learn more opens in a new window or tab This amount is subject to change until you make payment.

For additional information, see the Global Shipping Programme terms and conditions opens in a new window or tab This amount is subject to change until you make payment. If you reside in an EU member state besides UK, import VAT on this purchase is not recoverable. For additional information, see the Global Shipping Programme terms and conditions opens in a new window or tab Estimated delivery dates opens in a new window or tab include sellers dispatch time, and will depend on postal service selected. Delivery times may vary, especially during peak periods. Learn More opens in a new window or tab Learn More opens in a new window or tab Learn More opens in a new window or tab Learn More opens in a new window or tab See the sellers listing for full details. You're covered by the eBay Money Back Guarantee if you receive an item that is not as described in the listing. Find out more about your rights as a buyer

opens in a new window or tab and exceptions opens in a new window or tab. Contact the seller opens in a new window or tab and request a postage method to your location. Please enter a valid postcode. Please enter a number less than or equal to 1. The actual VAT requirements and rates may vary depending on the final sale. We may receive commission if your application for credit is successful. Terms and conditions apply. Subject to credit approval. Royal Mail 24 is not a guaranteed delivery option, delivery dates on ebay are Estimated not Guaranteed. We dispatch all goods by next working day unless stated on listing. All orders placed before 1.00pm will be dispatched same day. We accept all major credit or debit cards, Should you wish to pay via this method please call 01862 808040 with your details. Be the first to write a review. We may receive commission if your application for credit is successful. All Rights Reserved. User Agreement, Privacy, Cookies and AdChoice Norton Secured powered by Verisign.

Was told that 10mm feed pipe was too large so changed to 8mm but has tripped. The boiler cuts out every so often and I have to reset it. The first time I reset it it cuts out again after 5 secs or so but the 2nd time it works ok for a couple of Dont drive it on long trips and have oil changed every 3000 miles. Use Castrol syn. oil. Suddenly light came on yesterday.. However on start the fan runs, I can hear the ignitor buzzing, the boiler Not really, thou it would burn.the smell would get you I. Look for a small. I have a Boulter Camray quartet oil fired boiler. Cannot find the manual to see if that. Rag soaked in Gas Oil trying not to alter their setting or reset them. I have a Boulter Camray quartet oil fired boiler, as of this morning it does not seem to be firing up. There is plenty of oil in the tank and I cannot find the manual to see if that had any info. There is a lockout light that is on but I cant say if that was normally on or not. It did allow the flame to start but it just cut out again very quickly and a bit of smoke coming out of the unit, looks like some part of the fan unit or something that looks like one has gone bad. When the red lamp is shining, the controls of the burner are at "lockout", and can remain so without any danger. The burner can only be restarted manually by pressing the reset button 2 in which the red lamp is incorporated. Having waited for at least 5 minutes with the burner at "lockout", the user should firmly press the reset button 2 and then pay careful attention to what happens. He should try to single out which of the faults listed below is present. The burner starts, flame is established within the boiler and the burner does not return to "lockout" Obviously the cause of failure was only temporary, such as a sudden change in voltage, and no further action is required. Single Delivery Charge on all Boiler Spares.

Worcester spares are manufacturer quality spare parts that can save you valuable time and money extending the life of your boiler. PlumbNation stock a comprehensive range of boiler spare parts from Worcester spares. With a dedicated sales and customer service team based in the United Kingdom, we are happy to help with any of your technical or sales enquiries. For more information, please read our full Terms and Conditions. There are some websites that you can pay up to 40.00 for an annual fee for the same information although there are some items on this disk I have scanned from manuals I have collected over the years that you cannot get anywhere else. You can also download from your PC to your tablet or phone. You are the light of the world. For additional information, see the Global Shipping Programme terms and conditions opens in a new window or tab Learn More opens in a new window or tab Learn More opens in a new window or tab Learn More opens in a new window or tab Learn More opens in a new window or tab Learn More opens in a new window or tab Learn more Contact the seller opens in a new window or tab and request post to your location. Please enter a valid postcode. Please enter a number less than or equal to 14. All Rights Reserved. Services available are trade counter pick up, Next working day, next working day AM and Saturday delivery. We also operate same day express delivery service. Our Opening times are Monday to Friday 8AM to 5.30PM and Saturday from 8.00AM to 4.30PM. Heatingspares247.com is an Approved Spare Parts Stockist, and we guarantee to supply Genuine Heating Spares from the Boiler Manufacturers. Scroll to Top COVID19 Information In line with the latest government instructions As a key supplier of Heating Spares, we will continue to supply essential repair and

replacement Heating Spare Parts. We are only allowing 2 customers at a time If possible please contact us in advance on 01274 488388 or please visit www.heatingspares247.com.

www.heatingspares247.com to check stock availability. [Heatingspares247.com](http://www.heatingspares247.com) would like to thank you for your continued support during these testing times, and for continuing to provide essential services to our local communities. Please adhere to the advice given by Public Health England. We use cookies to ensure that we give you the best experience on our website. If you continue to use this site we will assume that you are happy with it. Ok. [Post Jobs Here](#) [Post Jobs Here](#) [Post Jobs Here](#) [Post Jobs Here](#)
Professional plumbers sharing advice with fellow plumbers and DIY alike. Register for free today! Checkout the [Directory of Plumbers](#), [Plumbing Advice Blog](#), [Plumbing Videos](#), and [Plumbing Advice Forum](#). For a better experience, please enable JavaScript in your browser before proceeding. It may not display this or other websites correctly. You should upgrade or use an alternative browser.
Baffles are a nightmare on the camray and it takes a lot more time to service them. Worcester oil boilers have a good reputation here in N. Ireland for reliability, largely due to the burners on them. My preference is worcester, I like installing and working on them. Never had any trouble with pumps as either riello or danfoss, both of which I carry on the van. I did read in one of the manuals that there maybe a suntec pump on some, I think. Ive not seen any issues with the riello pumps, in fact in two years only changed 2 rdb and 1 g5 pump, yet dozens and dozens of danfoss pumps. But probably 90% of the older boilers are carrying danfoss pumps and satronic control boxes so no surprise there. Only issue I have with worcester heatslave is the new style flow switch, the seal is failing and needs tightening. I now do it as part of the service. Boulter boilers was a recognised brand in the UK oil heating industry and ironically, as Boulter's operations were being integrated into the Buderus group, Buderus were acquired by Robert Bosch GmbH represented in the UK by Worcester Bosch one of Boulter's competitors.

<http://gbb.global/blog/3m-x64-projector-user-manual>