

File Name: A student manual of clinical skills.pdf
Size: 4814 KB
Type: PDF, ePub, eBook
Category: Book
Uploaded: 23 May 2019, 13:10 PM
Rating: 4.6/5 from 846 votes.

Download Now!

Please check the box below to proceed.



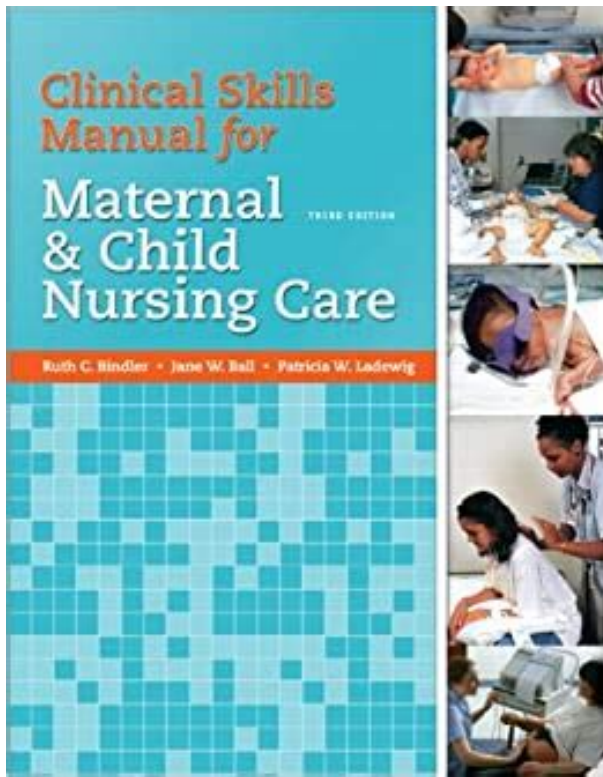
I'm not a robot



reCAPTCHA
Privacy - Terms

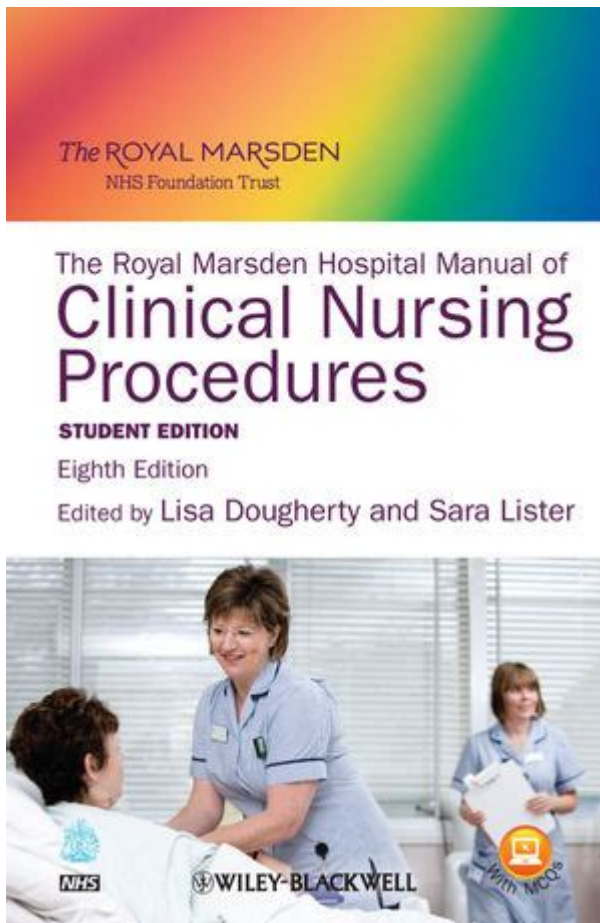
Book Descriptions:

A student manual of clinical skills

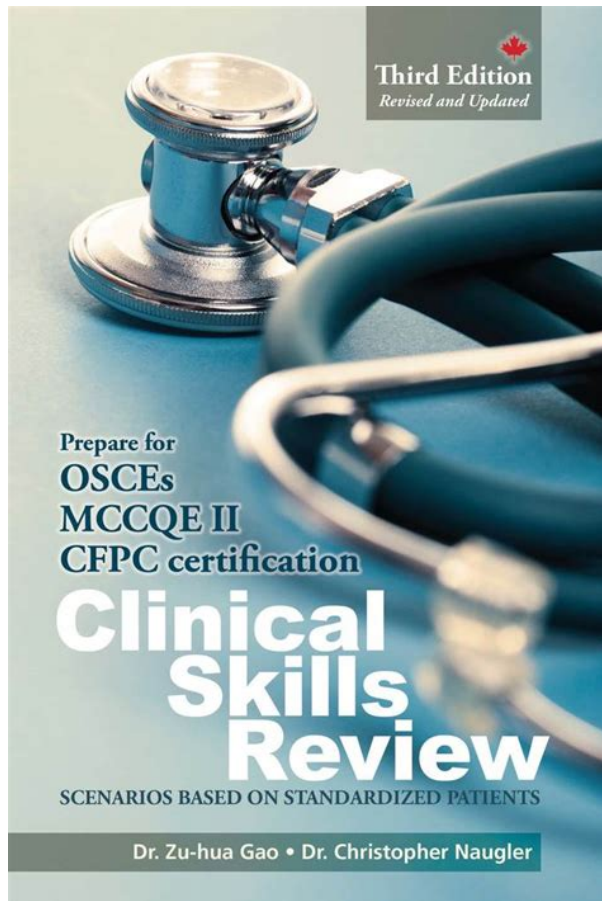


The 13digit and 10digit formats both work. Please try again.Please try again.Existing chapters, including an overview of the general examination followed by chapters on examination specific to each body system, child health and mental health, are supplemented by the general practice consultation and a new chapter that brings the specialist clinical methods of previous chapters together and considers their application within and abbreviated timescale.Then you can start reading Kindle books on your smartphone, tablet, or computer no Kindle device required. In order to navigate out of this carousel please use your heading shortcut key to navigate to the next or previous heading. In order to navigate out of this carousel please use your heading shortcut key to navigate to the next or previous heading. To calculate the overall star rating and percentage breakdown by star, we don't use a simple average. Instead, our system considers things like how recent a review is and if the reviewer bought the item on Amazon. It also analyzes reviews to verify trustworthiness. By continuing to browse the site, you consent to the use of our cookies.In order to view the full content, please disable your ad blocker or whitelist our website www.worldscientific.com.During this period, our website will be offline for less than an hour but the Ecommerce and registration of new users may not be available for up to 4 hours.Effective diagnostic and clinical management skills require competency in observing, listening, communicating, problemsolving and negotiating. In addition, the physician needs human relationship skills. It is apparent that a systematic curriculum is needed to teach these clinical skills to medical students and trainees and this handbook provides a practical guide. A unique feature of this book is the use of concepts developed in several other disciplines. For example, ideas to learn listening skills are borrowed from industrial management literature.<http://arcdesantmarti.com/biocop/Images/images-editor/error-analysis-john-taylor-solution-manual.xml>

- 1.0.



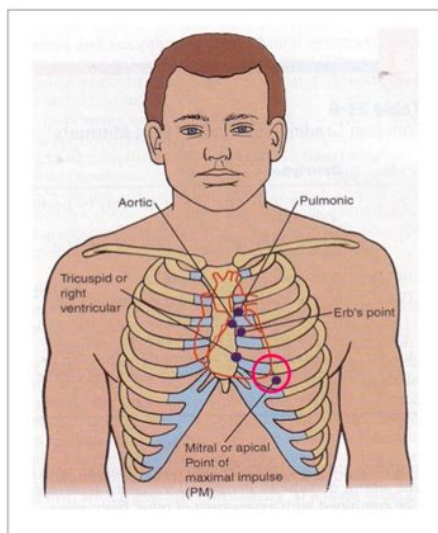
The other unique feature is the inclusion of practical exercises to learn and teach each of these skills. The Appendix outlines ideas on how to organize a course on clinical competency skills and includes a few exercises to start discussion groups. Ideas expressed in this book have been developed, tested and improved over a period of 25 to 30 years with input from trainees and medical practitioners. These timehonored methods contributed enormously to our understanding of the universe. Contemplative knowing, a third timehonored method of acquiring and consolidating knowledge, deserves greater attention. In this process, the learner learns more by reflecting on self and on the knowledge he has acquired. The learner tries to assimilate the acquired information into a coherent whole. In sections devoted to body regions and body systems, the book describes the sequence and techniques of physical examination, and helps the reader to identify selected abnormalities. It emphasizes common or important problems rather than the infrequent or esoteric found in both adult and childhood conditions. The sections are designed to help readers apply their knowledge to interpreting symptoms, examining the human body, and understanding physical signs. It is an invaluable resource written specifically for Nurse Practitioners by Nurse Practitioners. Health Promotion. Blood Disorders. Dermatology. The Eye and External Adenexa. Head and Neck. Respiratory System. The Cardiovascular System. The Gastrointestinal System. Endocrine Disorders. Nervous System. Musculoskeletal Disorders. Genito Urinary Conditions. Men's health. Women's health. Mental Health and the Nurse Practitioner in Primary Health Care. Care of the Child. Care of the Older Adult. If you wish to place a tax exempt order To decline or learn more, visit our Cookies page. Thanks in advance for your time. <http://smdes1gn.com/uploaded/error-control-coding-2e-lin-and-costello-solutions-manual.xml>



In sections devoted to body regions and body systems the book describes the sequence and techniques of physical examination and helps the reader to identify selected abnormalities. It emphasizes common or important problems rather than the infrequent or esoteric found in both adult and childhood conditions. The sections are designed to help readers apply their knowledge to interpreting symptoms examining the human body and understanding physical signs. It is an invaluable resource written specifically for Nurse Practitioners by Nurse Practitioners. Health Promotion. Blood Disorders. Dermatology. The Eye and External Adenexa. Head and Neck. Respiratory System. The Cardiovascular System. The Gastrointestinal System. Endocrine Disorders. Nervous System. Musculoskeletal Disorders. Genito Urinary Conditions. Men's health. Women's health. Mental Health and the Nurse Practitioner in Primary Health Care. Care of the Child. Care of the Older Adult. It touches on so many of today's key issues such as falls, abuse of older people, child protection, the national service frameworks and the National Institute for Health and Clinical Excellence. Nursing Standard August 22 vol 21 no 50 Please sign in or create an account. This indispensable guide sets the gold standard for nursing care, providing the procedures, rationale, and guidance required by qualified nurses to deliver clinically effective, patient-focused care with expertise and confidence. This helpful resource not only ensures you can provide your patients with the best care possible, but also simplifies the revalidation process with standard guidelines that drive professional development and establish a baseline to accommodate practice-based feedback and written reflection. The latest professional edition includes Receive emails with top industry news and special discounts to keep you informed and up to date. Graduate students are in the field beginning in the second year of fulltime study.

The course of study fulfills academic requirements toward certification as a family nurse practitioner, psychiatric/mental health nurse practitioner, nurse anesthetist, nurse midwife, or clinical nurse leader. The faculty encourages students to use and build upon past education and experiences. These students are actively engaged with faculty in practice, policy, scholarship and service. As a modern Jesuit institution, a central focus of our care is to improve health outcomes with

particular attention to the needs of underserved or vulnerable populations. Building on a tradition of caring, our commitment is to provide evidencebased, culturally sensitive interprofessional nursing and health studies education that promotes social justice and facilitates reflection and lifelong learning. A student whose cumulative quality point average falls below 3.00 in any semester is placed on academic probation for the following semester. Students on academic probation must meet with their academic advisors to make program adjustments to their course load. If, at the end of the probationary semester, the students overall average is again below 3.00, he or she will be dismissed. If a student earns two grades of B in one semester or a second grade of B in any semester thereafter, they will be dismissed from the program. A student who earns a grade lower than a B for any course will be dismissed from the program. To receive accommodations on the basis of disability, the student must selfidentify, provide documentation of the disability, and request accommodation from Disability Support Services. The decision regarding appropriate accommodations will be based on the specifics of each case. Accommodations must specifically address the functional limitations of the disability.

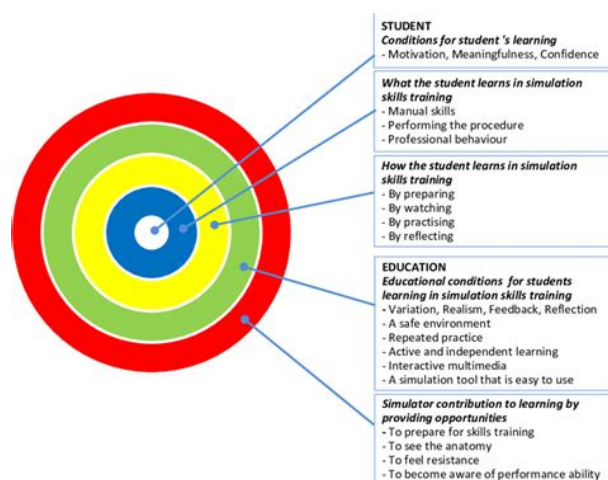


<http://www.raumboerse-luzern.ch/mieten/bose-wave-multi-cd-changer-manual>

An accommodation will not be made in those situations where the accommodation itself would fundamentally alter the nature of the program, cause undue hardship on the school, or jeopardize the health or safety of others. Eligibility Requirements for participation and completion in the nursing program shall include, but are not limited to, the following six capabilities Advisors can help students do longrange program planning, understand the curriculum design and course prerequisites, and clarify career goals. Students must meet with their advisors early in their last semester of enrollment to be sure all requirements for graduation are in order. Track coordinators advise students in their specialty and arrange practicum placements. All faculty are accessible through voice mail and email. If the overall grade point average is again below 3.00 at the end of that semester, the student will be dismissed from the program. If a student earns two grades of B in

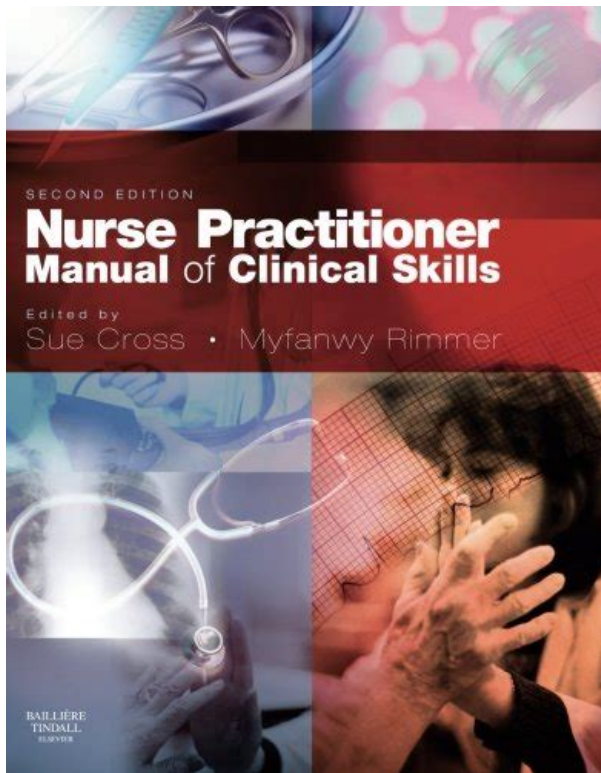
one semester or a second grade of B in any semester thereafter, they will be dismissed from the program. A second grade of "B" in an NS course in any semester will result in dismissal from the program. Individuals wishing to enroll as specialstatus student must submit a completed application form with the accompanying fee. Individuals must provide a transcript verifying that they have earned a baccalaureate or higher degree, with a quality point average of 3.0 or higher. Individuals planning to enroll in one of the Fairfield Universitys graduate programs in the fall are strongly encouraged to meet with the Track Coordinator of the program to which they are applying in order to discuss taking a courses prior to formal admission. Individuals enrolled as a specialstatus students may take up to two courses from the approved list, cannot be registered on a full time basis, and are not eligible for any tuition aid or financial support from Fairfield University.

<http://kelleyharper.com/images/canon-rebel-2000-manual.pdf>



Upon admission to the graduate program, credits earned as a specialstatus student will be applied toward the degree, provided the courses are approved by the Track Coordinator and the grade received in each course is a B or better. Successful completion of the course work does not guarantee formal admission. Course availability is prioritized to matriculated students and as such, special status students may only register in the 7 day period prior to the class start date. Bridgeport Hospital and Bridgeport Anesthesia Associates have the right to remove a student from assignment at Bridgeport Hospital after it has been determined by Bridgeport Hospital that such removal is in the best interest of the Hospital and of patient safety. Teaching and learning must occur in an atmosphere of mutual trust and respect. Such trust and respect can be developed and maintained only if truth and honesty prevail in the academic community. Moreover, it is the shared responsibility of all members of the University community to maintain this climate of honesty. Administrators, faculty, and students all benefit from the pursuit of academic excellence in an environment characterize by integrity, honesty, and mutual respect. Such community integrity is fundamental to, and an inherent part of, Jesuit education. The University reserves the right to penalize any student whose academic conduct at any time is, in its judgment, detrimental to the University. Bridgeport Hospital and Bridgeport Anesthesia Associates BAA have the right to remove a student from assignment at Bridgeport Hospital after it has been determined by Bridgeport Hospital that such removal is in the best interest of the Hospital and patient safety. In all academic work, students are expected to submit materials that are their own. Examples of dishonest conduct include but are not limited to Plagiarism thus constitutes both theft and deceit. Assignments compositions, term papers, computer programs, etc.

<http://darrellpugsley.com/images/canon-rebel-2000-eos-manual.pdf>



acquired either in part or in whole from commercial sources or from other students and submitted as one's own original work will be considered plagiarism. Moreover, a notation of the event is made in the student's file in the Academic Deans office. Any faculty member encountering an academic offense such as, but not limited to, those listed above will file a written report with his or her Dean, indicating reasons for believing the student has committed an academic offense, and indicating the proposed academic sanction. The student will receive a copy. If the student is in a school other than that of the faculty member, a copy will be sent to the Dean of the student's school. The student may, within 30 days following receipt of the faculty member's letter, request that the Dean investigate the allegations and meet with the parties involved. The Dean will issue a written determination within two weeks of the meeting, with copies to the student and to the professor. If the student requests an appeal to the Academic Vice President, an Academic Dishonesty Advisor Committee will be convened. Graduate students, as citizens, are subject to all federal and state laws in addition to all Program regulations governing student conduct and responsibilities. Students in violation of conduct policies may be subject to disciplinary action or dismissal. The outcome of this behavior may result in a failing grade, suspension or dismissal from the program. Therefore, all documentation must be submitted to CastleBranch in order for students to register for classes and attend clinical. Students are responsible for the cost of using the package. Instructions are posted on your CastleBranch account. Every student should verify documentation each semester. Annual physical forms should be submitted each academic year. Failure to comply will result in debarment from the clinical area. Evidence of disease is not acceptable, regardless of student age. Date of immunization or titre must be provided.

If your Rubella Titer is not immune, then you will need to provide the plan of how nonimmunity will be addressed. If your Mumps Titer is not immune, then you will need to provide the plan of how nonimmunity will be addressed. Please enter Date of Three Shots, or Date of Titer with the result, or Signed Refusal on the form and in the system. If PPD is Negative, please enter the PPD Given Date, Read Date, and Negative result on the form and in the system. If a PPD is Positive, you will need a Chest XRay with a Negative result to be compliant. After that, you will need an annual letter from your doctor stating you are symptom free. You must have a Tetanus or TD vaccine within the past 10 years. CPR certification must be current throughout the program. Most clinical sites require students to complete a criminal background check and drug screening before participating in

clinical placements. Therefore, it is the policy of the Egan School of Nursing and Health Studies that all admitted students must satisfactorily complete a criminal background check and drug screens prior to participating in the clinical component of the curriculum and may be required more than once depending on agency placement. These will be completed at the student's expense at a location designated by the University. Fairfield University and the Egan School of Nursing and Health Studies have no obligation to refund tuition or otherwise accommodate students in the event that a criminal background check or drug screening renders the student ineligible to complete required courses or clinical placements. Postmasters DNP students with an APRN license must carry insurance as an advanced practice nurse. For all MSNDNP Advanced Practice students, a copy of your current APRN license in addition to the Connecticut RN license must be provided.

<https://webgirls-studio.com/wp-content/plugins/formcraft/file-upload/server/content/files/162805bcaa0727---Bryant-air-conditioner-manual.pdf>

Students gain hands on experience with a variety of regional neuraxial and peripheral blocks and general anesthesia techniques under the close supervision of a supportive CRNA and MD faculty. In addition to the routine surgical cases, our nurse anesthesia students gain experience in trauma, major burn and highrisk obstetrical cases. Highrisk pediatric procedures and organ transplants are not performed at Bridgeport Hospital. Much effort has been made to provide our patient community with the most current anesthesia practices and services. This department ideal is accomplished by utilizing our ongoing Quality Management System QMS. This promotes continuous improvement in patient care and a stimulating educational environment. Click on the course. The SON clinical portal will appear. Listed in the grey tab on left side of screen you will see OSHA, click on it. Open the review folder to assist you before taking the exam You will need to pass with a grade of 34 out of 40. At the end of the exam click OK and submit, it will prompt you to review material if you'd like to see what you need to review. Save the screenshot as a file and submit to Castlebranch. If exposure to mouth or eye, flush the contaminated area with at least one liter of water. Immediately report the incident and the procedure followed to the course coordinator and to the Office of the Dean. All students should wear a Fairfield University Identification badge. Students would be required to pay for the Immersion credits. In order to receive Immersion credit at the end of the semester, students would have to obtain the following approvals before undertaking the additional hours Letters of verification from the Master'sgranting University must be submitted on University letterhead. Effective Fall 2017, the Egan School will accept a maximum of 600 postbaccalaureate supervised practice hours from approved Masters' level coursework.

dakotaterritorycustomhomes.com/ckfinder/userfiles/files/collins-r392-manual.pdf

Applications for PostMasters students with more than 1,000 postbaccalaureate supervised practice hours will be considered on a case by case basis. The Mu Chi chapter was established at Fairfield University in 1991 to recognize superior achievement, leadership, high professional standards, creative work, and commitment to the high ideals of the nursing profession among nursing students. Research grants, conferences, publications, films, exhibits, and awards are extended nationally by Sigma Theta Tau. At Fairfield University, membership is an honor conferred on students by invitation, following a committee review of qualifications. In addition, some rooms house specific equipment or simulators used to teach health assessment and specialized skills, such as Intensive Care, Anesthesia, Obstetrics, Neonatal Intensive Care, Pediatrics, and Home Care. Three interconnected rooms provide a fully stocked intensive care unit ICU; a control room from which to operate the Human Patient Simulators in either of the two adjoining rooms; and an operating room with anesthesia, oxygen, and other equipment necessary within that setting. Media upgrades connect these rooms to two nearby larger classrooms where students can view the actions of small groups participating in a scenario in either the ICU or the Operating Room. Through the HPC and the development of strategic partnerships, students and faculty provide preventive and chronic care

services with community organizations and agencies that share a common goal of improving the health of people and the community in which they live. By providing preventive and chronic care services in community settings, access to care improves and we are better able to tailor health education to the concerns of individuals and groups. Each year, the HPC staff and faculty work with hundreds of individuals and families in the Greater Bridgeport area. The HPC is a visible extension of the mission of Fairfield University and the Egan School of Nursing.

Faculty research at the HPC also provides opportunities for students to become involved as research assistants. In the latter case, pleaseHow are we doing. Europe PMC is part of the ELIXIR infrastructureEurope PMC is a service of theIt includes content provided to the. This is to ensure that we give you the best experience possible. Continuing to use www.cabi.org means you agree to our use of cookies. If you would like to, you can learn more about the cookies we use here. Okay, thanks. Please try again.No customer signatures are required at the time of delivery. To pay by cash, place cash on top of the delivery box and step back. Order delivery tracking to your doorstep is available.In order to navigate out of this carousel please use your heading shortcut key to navigate to the next or previous heading. Then you can start reading Kindle books on your smartphone, tablet, or computer no Kindle device required. Get your Kindle here, or download a FREE Kindle Reading App.To calculate the overall star rating and percentage breakdown by star, we don't use a simple average. Instead, our system considers things like how recent a review is and if the reviewer bought the item on Amazon. It also analyses reviews to verify trustworthiness. Please try again later. Kumar 4.0 out of 5 stars It is apt for fine tuning all that you need to know as a medical doctor.Sorry, we failed to record your vote. Please try again Sorry, we failed to record your vote. Please try again. About the Neis Clinical Skills Lab Clinical skills are a combination of discrete and measurable knowledge, skills, and attitudes essential for patient safety and quality patient care. A clinical laboratory or simulation learning and testing space is an immersive environment where participants can safely learn and test their knowledge, skills and abilities in a simulated clinical setting. Major funding for the skills lab was made possible through the generosity of the Delbert D.

Neis family and in September of 2002, The Delbert D. Neis Clinical Skills Laboratory NCSL was officially dedicated. The 170,000 square foot building is now the primary teaching facility for the KU Schools of Medicine, Nursing and Health Professions. The expansion and relocation of the NCSL program has provided an additional 8,300 square feet of simulation space and immersive education opportunity. Trained to consistently portray a patient or other individual in a scripted scenario for the purposes of instruction, practice, or evaluation. Standardized Patients are an intricate part of the NCSL program pedagogy because they help make simulated clinical encounters feel lifelike, and in many cases are trained in providing patientperspective feedback. All of our programs are based on certain patient demographics age, gender, medical conditions, etc. and we are always looking for new people with an interest in medical education. Please go to our Standardized Patient Program page for more information and fill out the Standardized Patient Profile survey to apply. The information is confidential and is needed to help us assign standardized patients to appropriate medical cases. If a role opens up that may look to be a good fit and matches your availability, someone on staff will be in touch. The University of Kansas School of Medicine commits to enhance the quality of life and serve our community through the discovery of knowledge, the education of health professionals, and improving the health of the public. Last modified Kansas City, KS 66160 9135885000 UNIVERSITY OF KANSASRetaliation is also prohibited by university policy. These skills include, among others, communication skills and interviewing techniques. Students begin by obtaining a complete medical history and physical examination techniques considering age variations. These skills are learning through lectures, workshops, standardize patients and in Community Preceptorship experiences.

July 10, 2019CRC PressJuly 10, 2019CRC PressJuly 10, 2019CRC PressWhere the content of the

eBook requires a specific layout, or contains maths or other special characters, the eBook will be available in PDF PBK format, which cannot be reflowed. For both formats the functionality available will depend on how you access the ebook via Bookshelf Online in your browser or via the Bookshelf app on your PC or mobile device. This much anticipated second edition remains readable, concise and pocket sized, while being extensively updated to reflect the latest learning requirements. Existing chapters, including an overview of the general examination followed by chapters on examination specific to each body system, child health and mental health, are supplemented by the general practice consultation and a new chapter that brings the specialist clinical methods of previous chapters together and considers their application within and abbreviated timescale. See our cookies policy In sections devoted to body regions and body systems, the book describes the sequence and techniques of physical examination, and helps the reader to identify selected abnormalities. It emphasizes common or important problems rather than the infrequent or esoteric found in both adult and childhood conditions. The sections are designed to help readers apply their knowledge to interpreting symptoms, examining the human body, and understanding physical signs. It is an invaluable resource written specifically for Nurse Practitioners by Nurse Practitioners. Once supplied with an RMA number goods must be returned complete with the manufacturers packaging and instructions in an undamaged and resaleable condition. For more information please visit our COVID19 information page here You can read more about our commitment to your privacy in our easy to read Privacy Policy. The Student Competence Committee also ensures ongoing compliance with the Technical Standards for the MD degree.

The Committee is chaired by the Instructor of Record for all College courses. Each subcommittee has representation from all four Learning Societies and the faculty at large. The Grade Appeals subcommittee is also composed of members of this body. Full details of committee and subcommittee structure are specified in the College bylaws. Students' performance continues to be reviewed by the same subcommittee throughout their enrollment in the College. Fellows do not participate in discussions about or vote on students from their own Learning Societies and are recused when those students are reviewed during subcommittee meetings. For students who do not pass the USMLE Step 1 examination on their first attempt, remediation opportunities are available through the medical school and national exam preparation courses. Students must pass the exam within three attempts, taken over a maximum of 12 consecutive months. This may require enrollment in an independent study course or leave of absence before reentering the standard curriculum. Students must pass the USMLE Step 2 Clinical Knowledge and USMLE Step 2 Clinical Skills examinations within three attempts each over a maximum of 12 consecutive months. Students must pass both examinations and be on trajectory to meet all other graduation requirements prior to the National Residency Match Program deadline to be certified for Match participation. The CSA is offered by both Kaplan and RUSM. Upon passing their fourth NBME SCE, students can schedule their CSA as follows This fee is subject to change. If a student fails the CSA on any attempt, they are required to complete a mandatory advising session prior to scheduling their next attempt. However, the deadline to sit for the retake is 120 days from the date of the previous attempt. This fee is subject to change.

<http://afreecountry.com/?q=node/3498>