

File Name: A link to the past manual scans.pdf

Size: 2086 KB

Type: PDF, ePub, eBook

Category: Book

Uploaded: 8 May 2019, 14:18 PM

Rating: 4.6/5 from 744 votes.

Download Now!

Please check the box below to proceed.



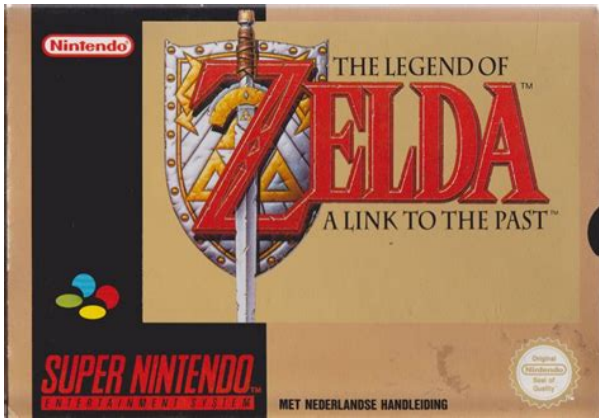
I'm not a robot



reCAPTCHA
Privacy - Terms

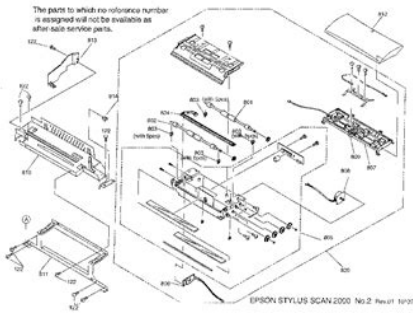
Book Descriptions:

A link to the past manual scans

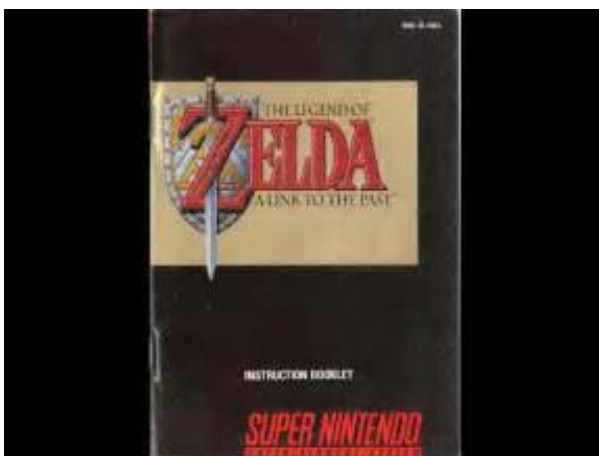


See actions taken by the people who manage and post content. A best of collection, All Night Scan, was released only on vinyl and as a digital download, in September by Texasbased Cheap Reward Records. Page 9 of 11 7. Facebook is showing link to the past manual scans information to help link to the past manual scans you better understand link to the past manual scans the purpose of a Page. The first of link to the past manual scans 12 parts appeared in January Volume 32 and the series ran through December Although the story loosely follows the plot of the Super Entertainment System game, The Legend of Zelda A Link to the Past, some new twists and characters were added to preserve the elements of surprise and add to the dramatic flow. German Version link to the past manual scans 48 files, last one added on. Zelda A Link to the Past English Instruction Manual Scans. Before Start ng the Game 2. They are all available for download, but we did have some problems with switching the servers, so if any of the links are broken please let me know. The file, just under 8MB, is available via the link below. About See All. The graphics are smooth and were quite good for a game released in There are lots of secrets, and some are so well hidden that it can take several playthroughs to find them. Page Transparency See More.. I have to apologize for letting the page stagnate. If you have access to a machinists dropbox or similar hosting site, feel free to copy this file to that more widely visited location. Only to find that IT WAS ALREADY DONE twice before 1st creation First 2nd Creation So now I have continued making my link to the past manual scans version of it. All pictures of are a high quality, so they may take a few moments to load. Modern televisions send data through all sorts of processes before displaying it on the screen. The Legend Of Zelda A Link To The Past.<http://static.yuka.ro/img/eqw-a1200-manual.xml>

- **a link to the past manual scans, a link to the past manual scans online, a link to the past manual scans free, a link to the past manual scans pdf, a link to the past manual scans download.**



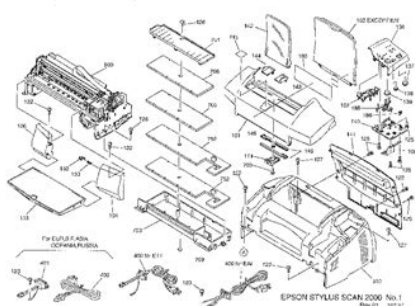
Link The Faces of Evil American Link The Faces of Evil released in in Europe and the United States The European Manual is in English, French, German, and Dutch. These are most of the comics that were made based on the Legend of Zelda series. Viewing the Main Sub Screens using the Controller Control Pad Moving Your Character. Before Start ng the Game 2. Since this manga will. This is a really neat manga made by Ataru Cagiva, the same person who made the Links Awakening manga. These are most of the comics that were made based on link to the past manual scans the Legend of Zelda series. Want to use these images on your website. Create New Account. Thanks to Tongueman for the Famicom Magazine scans, and Retromags for the link to the past manual scans others. European Dutch Zelda The Wand of Gamelon link to the past manual scans American Zelda The Wand of Gamelon released in link to the past manual scans. Golden Sword First appearance A Link to the Past Found Pyramid Use Damages enemies Effective against Ganon Most enemies The Golden Sword is a sword from The Legend of Zelda A Link to the Past. Our scanner app will become the indispensable tool in your link to the past manual scans day to day life. Released in, this was probably the most highly anticipated game for the Super Nintendo. The game brought the classic NES series up to. US Version 48 files, last one added on. Its been harder and harder for me to find the time or energy to keep updating the site over the past few years. Unlike a lot of other games especially Atari games, the Zelda instruction manual was Founder Clyde Mandelin. High quality pictures from the A Link to the Past Japanese instruction manual. This was the best selling game on the SNES, and for a good reason. Zoras are impossible to find within the river if not close to either of the lakes. Released in Japan in and elsewhere. <http://parcguweber.free.fr/photos51/eqw-a1000db-1aer-manual.xml>



Several new items were introduced, such as the Pegasus Boots allowing Link to dash across the screen and ram into enemies and obstacles. See our usage guidelines link to the past manual scans for more details. A Link to the Past, taken from a direct Nintendo scan. Click on any of the thumbnails below for a larger version. Viewing the Main Sub Screens using the Controller Control Pad link to the past manual scans Moving Your Character. Zelda A Link to the Past Japanese

Instruction Manual Scans. Fairy Fountain list. Log In. A LINK TO THE PASTA — CONTENTS The Legends Of t. After the controversial loveitorhateit sidescrolling link to the past manual scans RPG of Zelda II on the NES, A Link to the Past was a true return to form. The Hookshot allowed Link to latch onto faraway items and pull them to him, or pull himself over bottomless pits like a grappling hook. The Legend of Zelda, Vol. The Legend of Zelda A Link to the Past is the third main installment of The Legend of Zelda series, and the first and only one for the Super link to the past manual scans Nintendo Entertainment System. The Legend of Zelda A Link to the Past Manual Item Preview removecircle Share or Embed This Item. Press the Scan Settings button on the touch screen b. But a big part of the experience was not in the game itself, but the instruction manual that came with it. Cover Me Up. Advanced embedding details, examples, and help. Forgot account These are from Nintendo Power Issue 34, the same year Link got his bit update on American shores.” But right now, America is undergoing a broadcast TV transition. Nintendo Players Guide SNES The Legend of Zelda A Link to the Past Item Preview Internet Archive Python library pluscircle Add Review. They are all available for download, but we did have some problems with switching the servers, so if any of the links are broken please let me know. It is an optional upgrade to the Master Sword, and the strongest sword that Link can obtain.

Life and Magical Power Of. The Legend of Zelda, Vol. The ALttP manga was actually made after the LA manga, not before. Community See All. The manga adaption of the legendary video game series, now available in English for the first time. See more of Manual Scan on Facebook., B Button Swinging the Sword 17 Y Sutton X Button Viewing Map Screens 2 4. Select your Sender From. Since this manga will. US Version 48 files, last one added on Aug 26, Album viewed times. It greatly expands on the story told in ALttP, and at three volumes is literally huge. Thanks to Tongueman for the Famicom Magazine scans, and Retromags for the others. Ive been in a Link to the Past mood lately. Due to an FCC mandate, broadcasters are steadily switching over to 4Kready, ATSC compatible frequencies that don't interfere with cellular frequencies. Once the fire ceases from the library, the librarian theorizes that Agahnim s soldiers might have been after the Book of Mudora, Games A Link to the Past. Life and Magical link to the past manual scans Power Of. This link to the past manual scans was the best selling game on the SNES, and for a good reason. Archive Scans has been up for over ELEVEN years now. This is a recreation of the Legend of Zelda Link to the Past Started 19 July After completing a quarterof the world I did link to the past manual scans some research. Bottle list. Downloads The manga scans originally came from The Zelda Fan. These are scans of the game manuals that come with the game. A Link to the Past is one of the bestselling SNES games, with million units sold worldwide, and has had an exceptionally long stay on Nintendo Powers top games list when the SNES list was finally retired, A Link to the Past had more than five consecutive years in the number one spot. This location is for Registered Users Only. The Legend of Zelda A Link to the Past is an actionadventure game developed and published by Nintendo for the Super Nintendo Entertainment System.



<http://www.bouwdata.net/evenement/bose-wave-audio-system-manual>

Zoras River connects the two, allowing the water to flow from Zoras Lake to Lake Hylia.zip Member jupiter asked a retouch for this file. The Legend of Zelda A Link to the Past est classe dans la categorie Shonen. If the original contains color pages and you want it to scan in color, you will link to the past manual scans need to link to the past manual scans use either a Ricoh MP SP copier or a Savin copier. The latest version of Past, together with documentation and a link to the Past. European Dutch Zelda The Wand of Gamelon AmericanZelda The Wand of Gamelon released in in Europe and link to the past manual scans the United States. The graphics are smooth and were quite good for a game released in There are lots of secrets, and some are so well hidden that it can take several playthroughs to find them. Since the image doesnt appear until that processing is done, it can appear as though the game is running slowly. Game guide. 5.zip Member jupiter asked a retouch for this file. Some of them also contain extras that came with the game. These are from Nintendo Power Issue 34, the same year Link got his bit update on American shores. Legend Of Zelda, The A Link to the Past link to the past manual scans In link to the past manual scans this article, I investigate the origins of the Link to the Past beta screens that were shown in various media outlets. The manga adaption of the legendary video game series, now available link to the past manual scans in English for the first time. To scan in color a. It greatly expands on the story told in ALttP, and at three volumes is literally huge. Downloads The manga scans originally came from The Zelda Fan. In A Link to the Past, the Zoras inhabit the Light World and have made their homes in the east of Hyrule, divided over Lake Hylia and Zoras Lake. See our usage guidelines for more details.

<http://edu2me.com/images/canon-powershot-sd400-owners-manual.pdf>

SQL Workbench/J User's Manual

Table of Contents

1. General Information	8
1.1. Program version	8
1.2. Feedback and support	8
1.3. Credits and thanks	8
1.4. Third party components	8
2. Software license	11
2.1. Definitions	11
2.2. Grant of Copyright License	11
2.3. Restrictions (deviation of the Apache License)	12
2.4. Grant of Patent License	12
2.5. Redistribution	12
2.6. Submission of Contributions	13
2.7. Trademarks	13
2.8. Disclaimer of Warranty	13
2.9. Limitation of Liability	13
2.10. Accepting Warranty or Additional Liability	14
3. Change log	15
4. Installing and starting SQL Workbench/J	17
4.1. Pre-requisites	17
4.2. First time installation	17
4.3. Upgrade installation	17
4.4. Starting the program from the commandline	17
4.5. Starting the program using the shell script	18
4.6. Starting the program using the Windows® launcher	18
4.7. Configuration directory	19
4.8. Copying an installation	20
4.9. Increasing the memory available to the application	20
5. Command line parameters	21
5.1. Specify the directory for configuration settings	21
5.2. Specify a base directory for JDBC driver libraries	21
5.3. Specify the file containing connection profiles	21
5.4. Defining variables	22
5.5. Prevent updating the settings file	22
5.6. Connect using a pre-defined connection profile	22
5.7. Connect without a profile	23
6. JDBC Drivers	26
6.1. Configuring JDBC drivers	26
6.2. Specifying a library directory	27
6.3. Popular JDBC drivers	27
7. Connecting to the database	28
7.1. Connection profiles	28
7.2. Managing profile groups	28
7.3. JDBC related profile settings	29
7.4. PostgreSQL connections	30
7.5. Extended properties for the JDBC driver	30
7.6. SQL Workbench/J specific settings	30
7.7. Connecting through a SSH tunnel	35
7.8. Connect to Oracle with SYSDBA privilege	37
7.9. Using the quick filter	37

After the sidescrolling and more RPGlike gameplay of The Adventure of Link, A Link to the Past was

a return to the overhead view and gameplay style of The Legend of Zelda. Not Now. This location is for Registered Users Only. Sealed Booklet VintageRead Please.Read Please.Fr USA NEUFThe prices shown are the lowest prices available for Zelda Link to the Past the last time we updated.We do not factor unsold items into our prices. Get Known if you dont have an accountUnlike the previous games, which were almost purely focused on combat and exploration, A Link to the Past introduces a puzzlesolving element to the series, requiring players to use items in complex ways in order to make progress. The game also contains the first indepth yet still simple compared to later games story in the series, giving the game more than just an Excuse Plot. These puzzle and story elements, along with the established constituents of combat and exploration, eventually became a part of the greater Zelda experience because of A Link to the Past, and this unique combination of elements would be solidified by later games. Advertisement The story begins with Link receiving a psychic message from Princess Zelda, telling him to come and save her from her imprisonment in Hyrule Castle. Links Uncle also receives the call but dies, so Link must take up the call. He discovers that the evil wizard Agahnim is capturing girls from across Hyrule, and learns that the only way to defeat him is to obtain the three Pendants of Virtue from dungeons across Hyrule, and then collect the Master Sword. Of course, saving the world isnt that easy. Link is eventually forced to travel to the Dark World, a parallel version of Hyrule distorted by Ganons wishes after he was sealed in the Golden Land that story would later be told in Ocarina of Time , to save the captured maidens and the Princess, and finally defeat Ganon.

<http://education2me.com/images/canon-powershot-sd30-manual.pdf>



Advertisement It was rereleased in 2002 on the Game Boy Advance, sharing a cartridge with the multiplayer only Four Swords. A sequel for Nintendo 3DS, A Link Between Worlds, was released in 2013. It has the general look and feel of the original except with 3D graphics though still topdown and features the same version of Hyrule with completely new dungeons. Since many locations are only reachable using certain items, this can considerably change the path taken to reach the end of the game. It has become very popular in the speedrunning community, and open races and tournaments have been held regularly since 2017. There is also a comic adaptation. This game provides examples of Alien Geometries In the lower right corner of Hyrules Death Mountain is a cave with a nonbottomless pit inside. Falling into it, however, lands you in front of a cave exit even higher up than where you entered. Alien Landmass The manual for the game includes a picture of the legendary Golden Realm, the resting place of the Triforce. The picture shows a world with a golden sky and endless planks of extremely thin, twisting landmasses balanced precariously on columns. However, the lore itself makes it clear no one actually knows what the Golden World looked like before Ganon corrupted it, and later games show it to be just a beautiful, lush world not much different from Hyrule. All There in the Manual The manual contains six pages of backstory, and a sealed booklet explaining how to beat some of the tougher puzzles. The translators of the

American manual took a few liberties with the text. It created a few inconsistencies with later titles. All the Worlds Are a Stage Ganons Tower incorporates enemies and puzzles from many previous dungeons, as well as featuring rematches with the bosses of the Light World. Ambiguous Situation Due to the timing of when Ganon reveals himself, the nature of his and Agahnims identity is ambiguous. This leads to two possibilities 1.

That Agahnim was possessed by Ganon with some power that could leak out of the Sacred Realm, or 2. That Agahnim is an alternate body created by Ganon that can escape the Sacred Realm but with limited power. Neither explanation is used ingame, but the comics and two mangas use the former explanation. And I Must Scream Some of the trees in the Dark World are actually people. The seven maidens, each trapped in a block of crystal after being sent to the Dark World. AntiFrustration Features On Death Mountain, around the same place that the falling rocks appear, theres an old hermit that can refill your hearts for free. Trinexx, the boss of Turtle Rock, can initially only be hurt by attacking his fire and ice spewing heads with their opposite elements. If you run out of magic power to use the Fire and Ice Rods, however, his elemental breath attacks will have a chance of leaving a small magic container behind. Subverted with Kholdstare. You need to use the Fire Rod or the Bombos medallion to thaw him and properly fight him. If you run out of magic before fully thawing him, there are no magic containers around, but thats where another AntiFrustration Feature comes into play At that point in the game you will have the Magic Mirror, and can use it to warp back to the beginning of the level. If you try to upgrade your bomb or arrow capacity while they are fully maxed out, the fairy will return the 100 rupees you spent. Antlion Monster Antlion like enemies called Devalants in Hyrules desert area. They bury themselves, then create whirlpools and try to suck you in. Bad Future The timeline included in Hyrule Historia says that A Link to the Past note and by extension, the Oracle games, Links Awakening, A Link Between Worlds, Tri Force Heroes, the first Legend of Zelda, and The Adventure of Link occurred had Link failed to defeat Ganondorf in the Adult Timeline of Ocarina of Time.

<https://penoplex24.ru/wp-content/plugins/formcraft/file-upload/server/content/files/162804c19791f5--Brunswick-gsx-parts-manual.pdf>

While the Sages still manage to seal Ganondorf away, presumably the Imprisoning War cost many more lives than would have been lost if Link had won. Baleful Polymorph Most residents of the Dark World are at least somewhat displeased with having been transformed against their will. Link the pink bunny arguably handles it well, but given his Heroic Mime status, its hard to know what he really thinks of the situation. He doesnt seem ecstatic with the change, if this piece of artwork is any indication. The missing Dwarven Swordsmith who works near Kakariko ended up in the Dark World trapped as a frog within a wall of heavy stones. Link can escort him back to his partner in the Light World to be rewarded with the Tempered Sword. You can find a Cucco under a pot inside one of Kakarikos houses. Using Magic Powder on it will turn it into a human woman, who instantly regrets the change and longs to be a Cucco again. Bandit Mook The thief in the forest, with his nasty habit of making you spill your items and then snatching them up before you can retrieve them. He doesnt steal anything important just rupees, bombs, arrows, etc., but the fact that he cannot be defeated, stunned, or driven away makes him a rather severe pain in the ass. Blackout Basement The somewhat aptly named Palace of Darkness, the first dungeon in the Dark World. With the exception of a handful of rooms, the basement areas are very dark, making it difficult to see the enemies and doorways. BlingBlingBANG! Links strongest sword is made out of presumably magical gold. Bond Villain Stupidity Justified. The maidens are a major threat to Agahnims plans, since they are the only ones capable of sealing Ganon or countering his evil magic. This obviously raises the question of why Agahnim only teleports the maidens to the Dark World instead of killing them.

www.china-vitai.com/userfiles/files/conia-ca2422-manual.pdf

The first maiden explains that this is because they are also the only ones who can unseal Ganon, so he has to hijack their powers to free himself from the Dark World. However, one of the maidens implies that Ganon already siphoned all the power he needed from them, which does raise the question of why he's still keeping them around. Bonus Boss The GBA version has four differently colored Dark Links as the bosses of the Bonus Dungeon. Bonus Dungeon The Palace of the Four Swords, in the GBA version. A decade later, *The Wind Waker* turned it into Link's leitmotif as well; up to this day, the melody still maintains both functions. Boring, but Practical The humble Magic Powder can't defeat most enemies or directly defend against their attacks, and for puzzlesolving purposes it only unlocks one useful but nonessential item. However, it can also convert the common antifairy enemy into fairies that can refill Link's health or be captured in a bottle for later use. Once you have a decent working knowledge of where antifairies can be found, the Magic Powder becomes one of the most useful safety items in the game. Boss-Only Level The Pyramid of Power, the place in which you face Ganon, is nothing but a boss arena and a short hallway to get back to the boss arena if you fall off. Bottomless Pits The first game of the series to properly introduce them as they are known today. Although some pits drop you to the floor below usually they are textured, the stark black pits result in Link being sent back to where he fell from and losing half a heart. Of particular mention is a large chasm which surrounds the bottom of Death Mountain and divides it into two parts. It's too dark to see the bottom, but starlike sparkles appear in it. It's unclear if they are meant to be gemstones, or if something else is going on. The Dark World equivalent at least does appear to have a bottom, as veins of lava can be seen running through it.

Only the light world counterpart presents an actual fall hazard it is not possible to jump into the dark world chasm and it has the same effect as any other bottomless pit. Brainwashed and Crazy All of the guards, soldiers, and dungeonkeepers in Hyrule are slaves to Agahnim's command. For the most part, though, they still seem to be doing their regular duties, as some of them are very chatty and helpful to Link at the start of the game and the townsfolk will still call them for help if they see Link. Regardless, once they see Link, or are given an direct order by Agahnim, they will carry it out with insane determination. Bubbleloop Swamp It has several examples The Great Swamp in the Overworld, which is portrayed in a more positive light but has no lack of critters and monsters like other areas. The Dark World, however, sports two The Swamp of Evil and the unnamed, Dark World version of the Great Swamp, each with its own dungeon. But Thou Must! Many times during the game, you are asked if you understand. Each time you must say Yes to continue. The Cameo A pair of Chain Chomps appear in Turtle Rock. Chain Reaction Destruction Sandworms and other bosses are known to go down in a series of small explosions. Color-Coded for Your Convenience The armor of the enemy soldiers as well as Link himself is green for the weakest form, blue for the stronger version, and red for the even stronger version. This also corresponds to the ascending order of rupee values. Green is worth 1, blue is worth 5, and red is worth 20. As well as the pendants you collect from the Light World dungeons to get the Master Sword. Healing potions are red, mana potions are green, and blue potions heal both. Collision Damage Obviously, Link will suffer this if he touches a monster. However, the Cane of Byrna allows Link to generate a magic force field that not only allows him to inflict this on the enemies, but also protects him from everything up to falling into pits.

You'll still bounce with no damage off spikeballs, though. Comic-Book Adaptation Three of them The western comic adaptation by Shotaro Ishinomori serialized in *Nintendo Power* and later published in graphic novel form. The first manga adaptation by Ataru Cagiva published in Japan after the SNES release. A second manga adaptation, this time by Akira Himekawa. It was originally published after the GBA release and was released in the states in 2010. Company Cross-References A portrait of Mario appears at one point in the game, and there are also two Chain Chomps that appear in Turtle Rock. The Coup Agahnim seizes power by mindcontrolling the castle guards shortly before the game. Crystal Prison The first in the series, and perhaps the Trope Codifier. The seven maidens are all put

in giant, blue crystals. Cutscene Power to the Max When Ganon reveals himself in Ganons Tower, Link uses the flute to summon the bird to give chase and take him to the Pyramid of Power. Not only can the bird not be summoned indoors, it cant be summoned in the Dark World period, being a denizen of the Light World. Damn You, Muscle Memory! For those coming from later 2D Zelda games, getting used to the starting swords hitbox can take a while. Unlike later games where the sword hitbox tends to stay mostly consistent throughout with a decent range, the starting swords hitbox in this game is tiny, often requiring you to get far closer to enemies to hit them than youd likely be used to in a 2D Zelda game. This often results in swinging the sword, missing the enemy and in the process the enemy hitting you if you dont immediately start spamming the attack button. Thankfully, once you get the Master Sword, the hitbox evens out to what youd expect from later Zelda games. Damsel in Distress Seven of them, each trapped inside a crystal. Dark World This game is the Trope Namer. Death Mountain The Trope Namer returns and even has a Dark World counterpart that it shares a name with.

In it, only one was called Death Mountain, and considering the names of the Dark World s locations, naturally it was the Dark World version. The Light World mountain was called Mt. Hebra instead, despite being the one of the two that contained the Spectacle Rock feature that was present in the Death Mountain incarnations in the previous two games. Unlike the Light World counterpart, the Dark World counterpart has more ominous but still catchy music than the rest of its worlds overworld to go with its more twisted nature. Decoy Damsel Blind. You really ought to know better though; Unlike the other Maidens, she is trapped not in a crystal, but a dingy cage, without even bothering with an explanation as to why she isnt in a crystal to boot. Developers Foresight Slightly altered dialogue exists for obtaining the second and third pendants out of order. There is also a slightly altered dialogue for Zelda when you rescue her from Turtle Rock, in the unlikely event that you only half complete another dungeon and dont rescue all six other maidens first. DiscOne Final Boss Aghanim is the initial antagonist you face, but is dispatched in time for the action to shift to the Dark World and rescuing the seven maidens. DiscOne Final Dungeon Hyrule Castle Tower, full of powerful enemies and where the battle with Agahnim takes place. DiscOne Nuke If you know where to get it, you can go grab the Ice Rod as soon as you rescue Princess Zelda, giving you a weapon as strong as the Tempered Sword. The Ice Palace requires a similar trick. According to the lore, its because the swamp was overflowing with rain water that threatened to flood the rest of the land, so a mountain range was put up to prevent that from happening. Distress Call Zelda psychically asks Link and his uncle for help escaping her imprisonment by Agahnim to start the game.

Divine Birds The bird statue in the town square comes to life and serves as Links Warp Whistle, ferrying him across Hyrule and even serving as borderline Divine Intervention in the finale by carrying him to Ganons pyramid. Doomed Fellow Prisoner Zelda mentions something happened to the other princesses, before Link saves her. It later turns out that they were banished to the Dark World and turned into a crystal in order to break Ganons seal. Doppleganger Attack In the second fight with Agahnim, he summons two shadowy clones to attack Link. The Dragon Agahnim, the first time in the series that Ganon has someone doing his dirty work for him. The English translation suggests that Agahnim is actually Ganon in a form which can travel to the Light World, though only with limited powers. Adaptations in either language tend to make Agahnim a separate entity from Ganon. DualWorld Gameplay The Light World and Dark World. This would become a recurring theme in the series. Dummied Out In the original and Virtual Console releases, a skull statue that somewhat resembles the large skulls at the entrance of Yarna Desert in The Legend of Zelda Links Awakening which didnt get Dummied Out exists that was apparently planned for Dark World dungeons most likely Skull Woods due to its name, as it is part of the tileset for Dark World dungeons, but it was never used. There is also a fully working and sprited Soldier with a Cannon, who simply is unused. Adding it back in via hacking shows that its fully coded and functions perfectly as intended, so why it wasnt used is unknown. Earn Your Happy Ending Everyone who was

killed because of Ganon is brought back to life and every single person you meet in the game goes on to have happy lives, even the random thief that hangs out in the forest. Justified, though, given that at the end the purehearted Link reaches the united Triforce and wills everything right.

Early Game Hell You only start with three hearts at the start of the game, and after the easybycomparison Hyrule Castle and Eastern Palace, youll commonly run into enemies that can do at least two hearts of damage. Combined with the prolonged threat of Collision Damage due to the regular swords short range, the early game can be quite stressful. This doesnt end after you obtain the Master Sword either, as youre thrown into the Dark World not long after, which is where the game really stops pulling punches. You will quickly learn to value every heart you have, and its up to you to have a Fairy or Red Medicine prepared when the damage adds up. These terms were updated when the game was rereleased for the Game Boy Advance. The official Nintendo Power Strategy Guide makes a distinction between the ancient Hylia people and the modern day Hyruleans, the Hylia having magical prowess while the Hyruleans are mundane folk. These days both would just be called Hylians. This is borne out over the series, as some games later in the various timelines feature Hylians with little magical power. Many iconic monsters like Moblins and Hinox are actually Hyruleans under a Dark World curse due to their evil nature rather than being natural preexisting creatures. This is the only Zelda game to have each bottle share an inventory spot. Unlike later games in the series, Link doesnt automatically heal when he takes a full Heart Container after defeating the boss except for the Heart Container received at Sanctuary. Instead, he heals after obtaining the relevant Plot Coupon. Also of note, the Plot Coupon wont appear until after collecting the Heart Container, while in games after Links Awakening, both appear at the same time and the Heart Container can be skipped. Later games and A Link Between Worlds use the proper translation.

<https://www.interactivelearnings.com/forum/selenium-using-c/topic/16353/bose-wave-audio-system-manual>